



# Thank You!

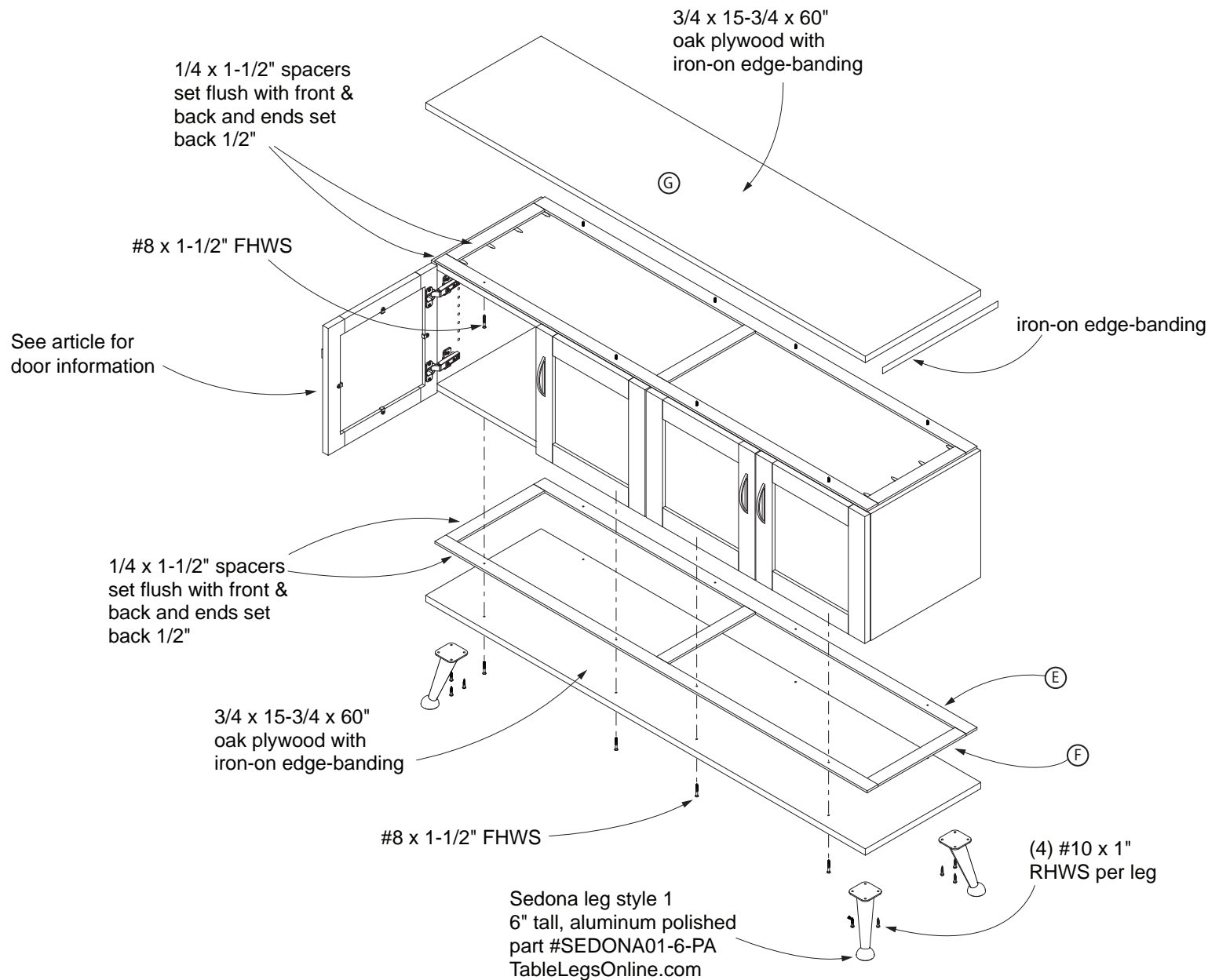
---

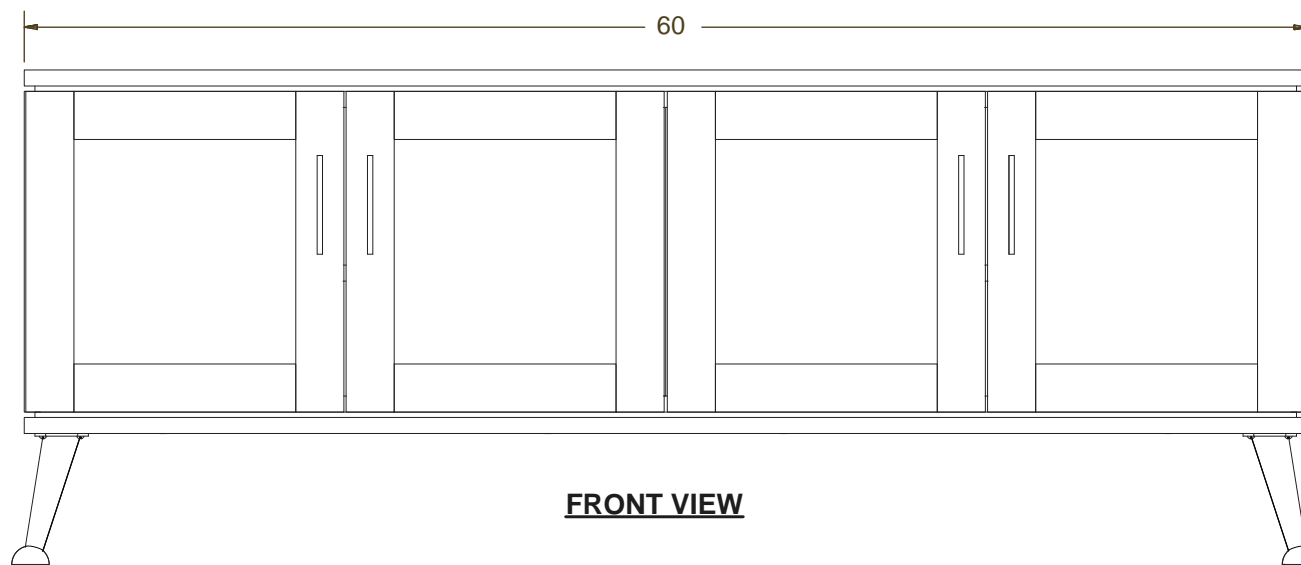
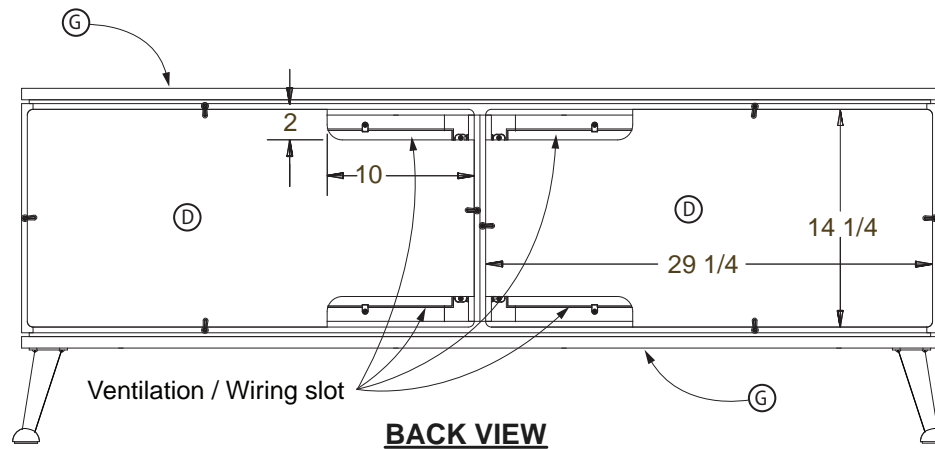
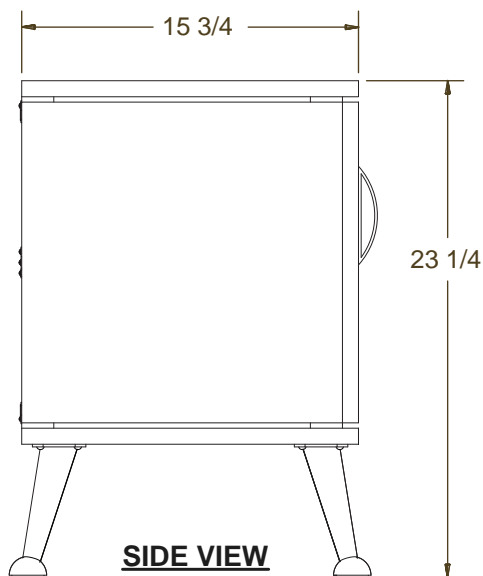
**You have successfully downloaded your document from Workbenchmagazine.com. Below are some tips for Trouble-Free Printing**

- 1)** Clear printer memory. If you are unable to print this document, turn off your printer for at least 15 seconds and try again.
  
- 2)** Print two or three pages at a time. If clearing the printer memory didn't help, try printing only two or three pages at one time, rather than sending the entire file
  
- 3)** If a document is required to be at an accurate scale set the page scaling option to "none" in your printer settings.
  
- 4)** Get advanced printer help. Visit Adobe Support for instructions in troubleshooting common printer problems.

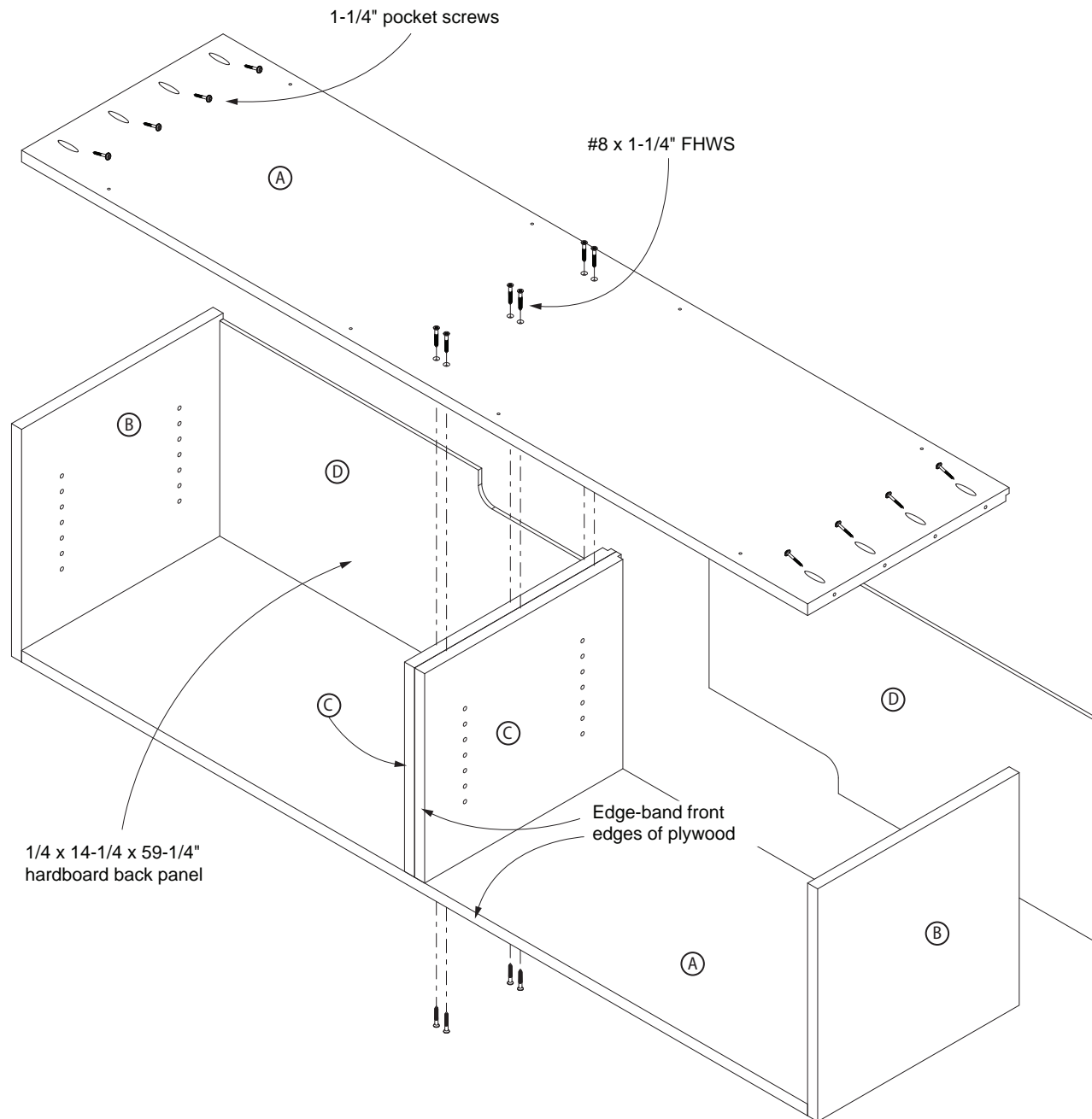
<http://www.adobe.com/support/techdocs/316508.html>

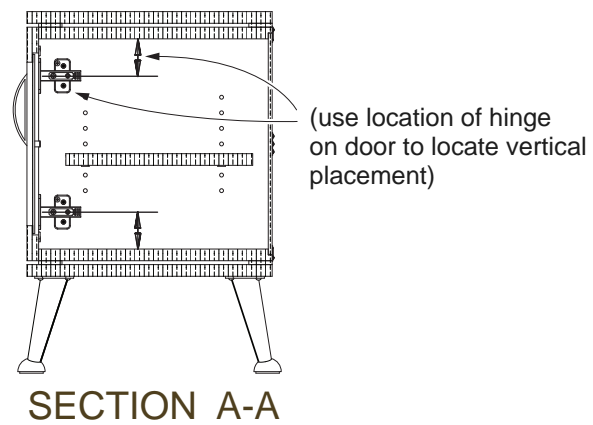
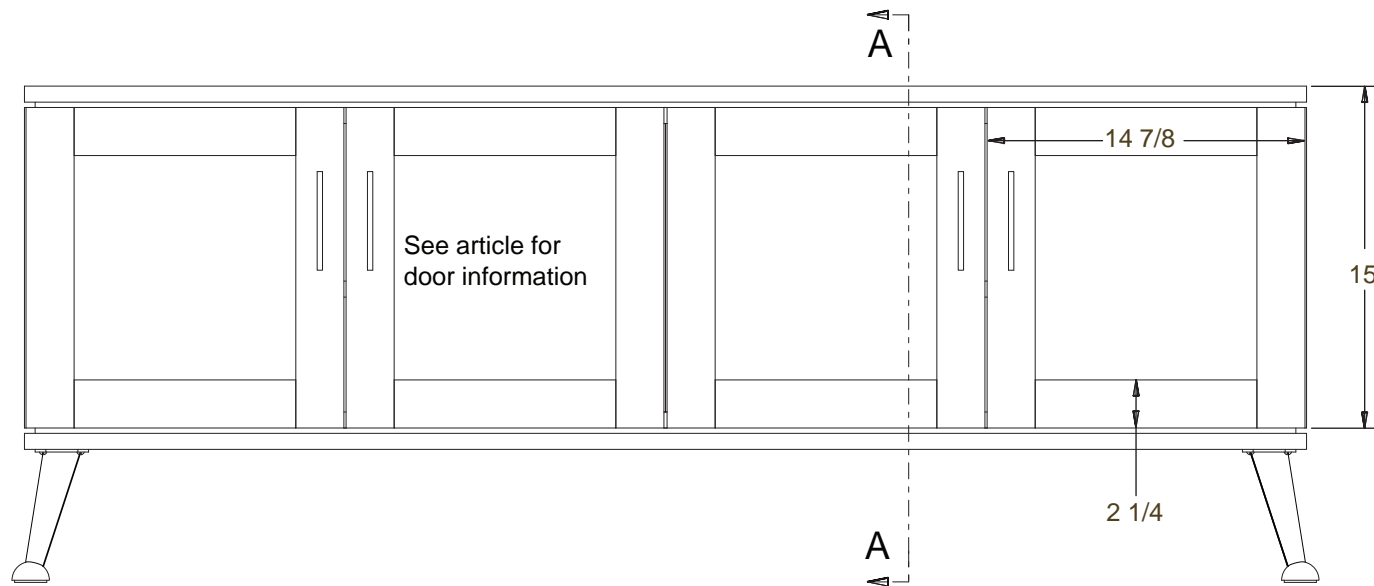


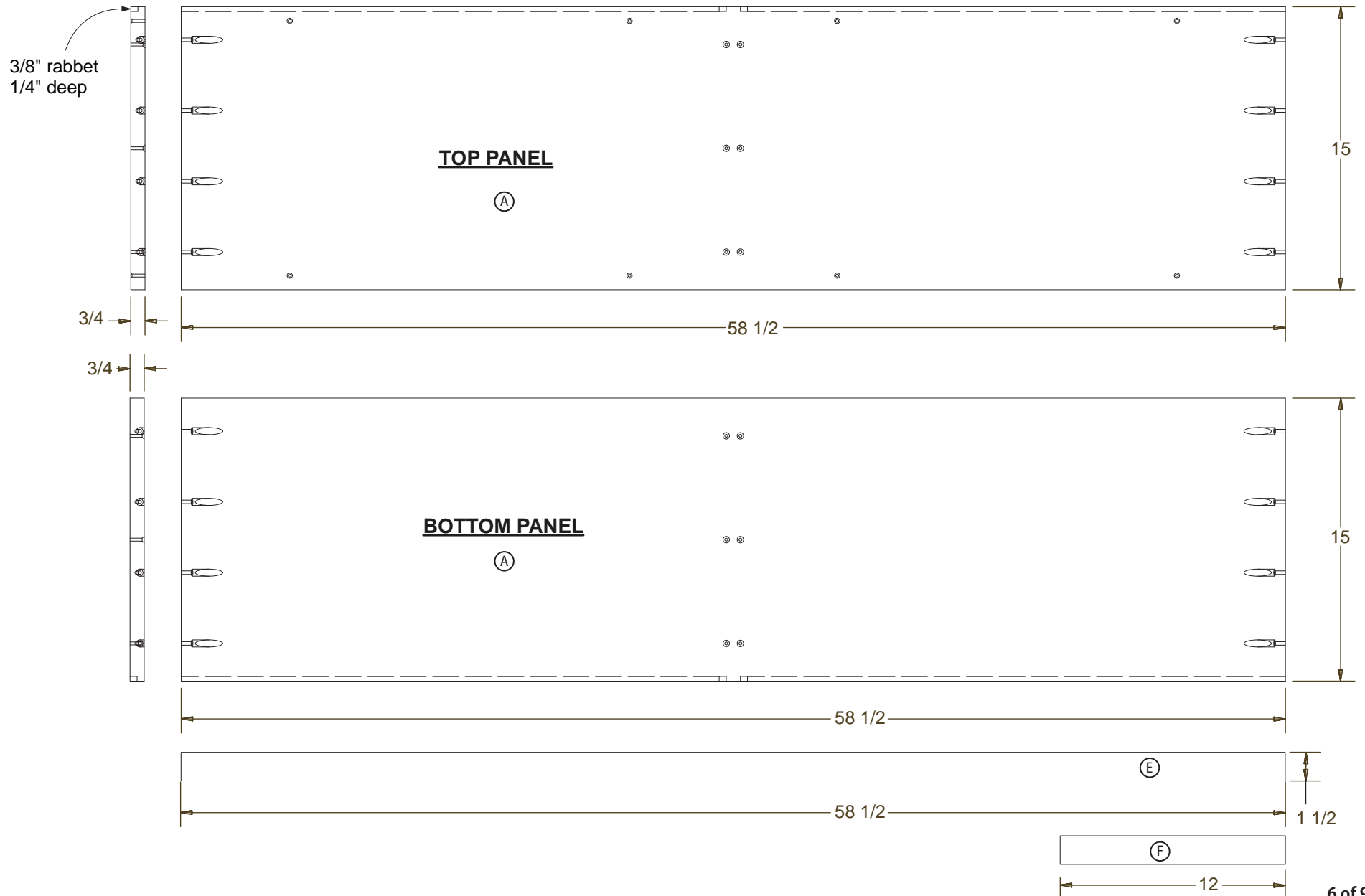


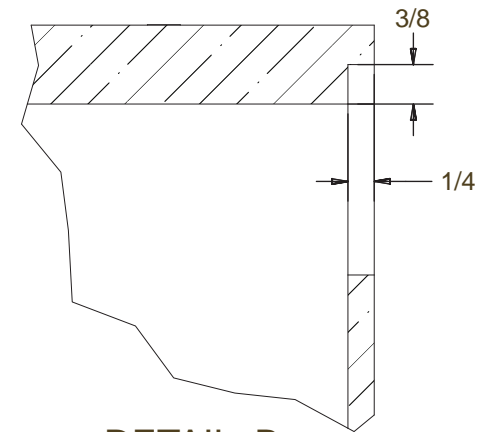
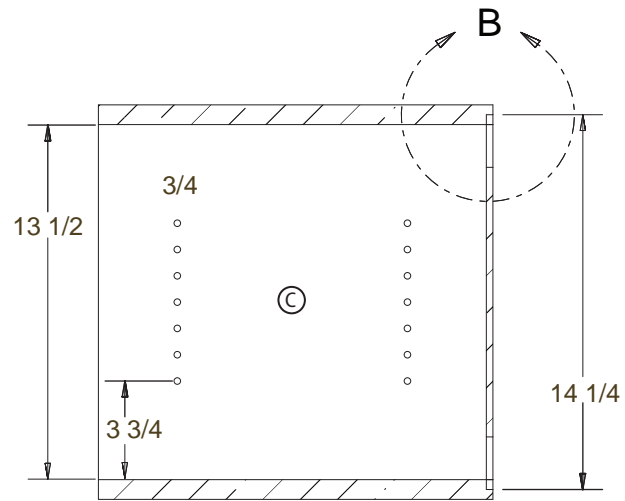
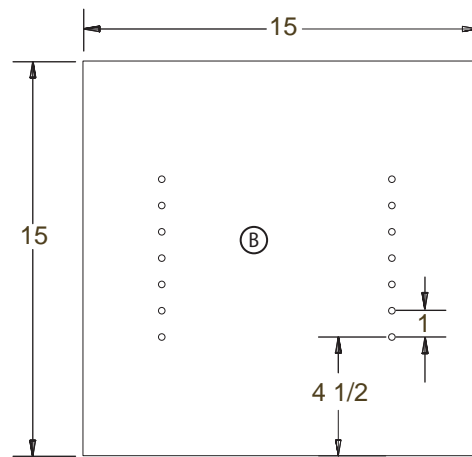






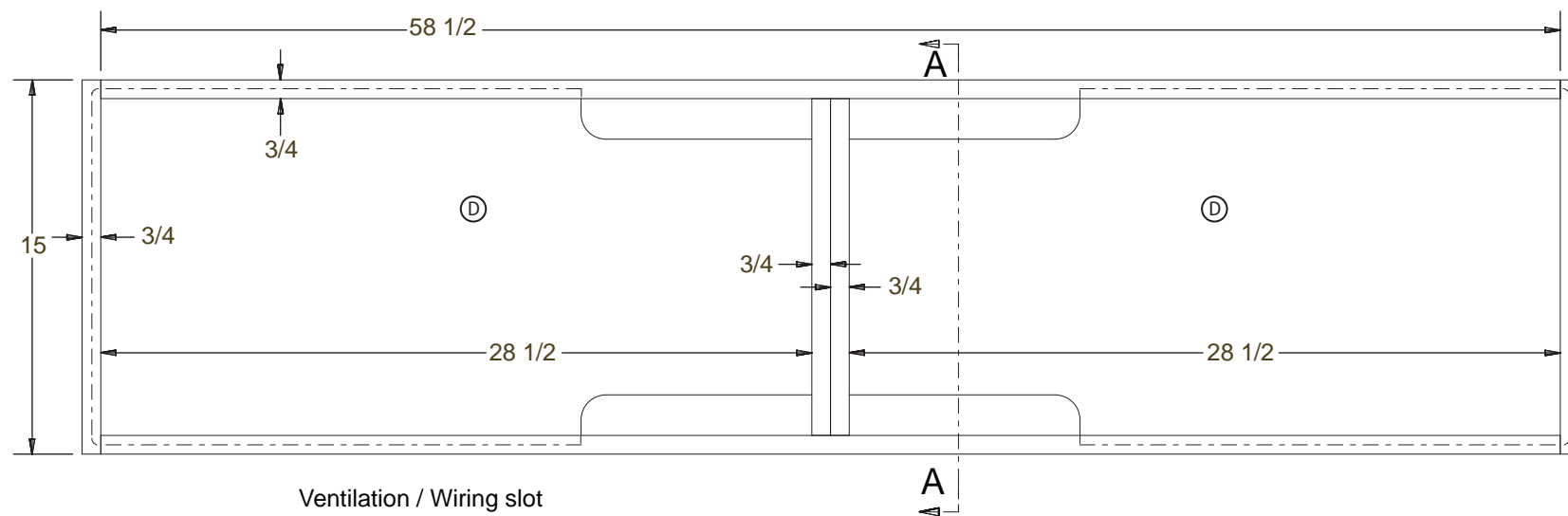






SECTION A-A

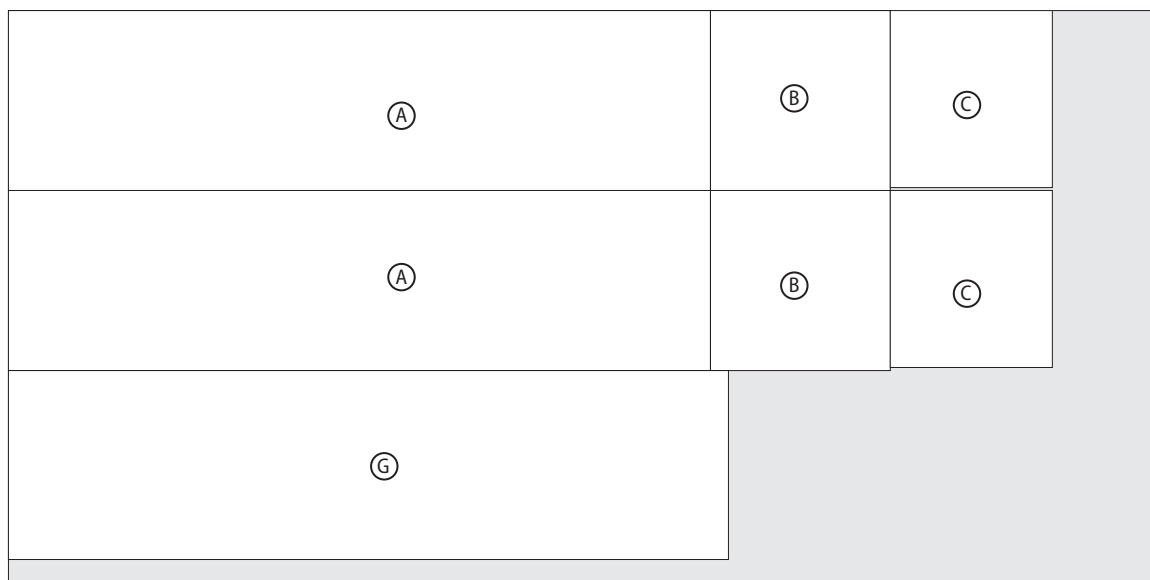
DETAIL B



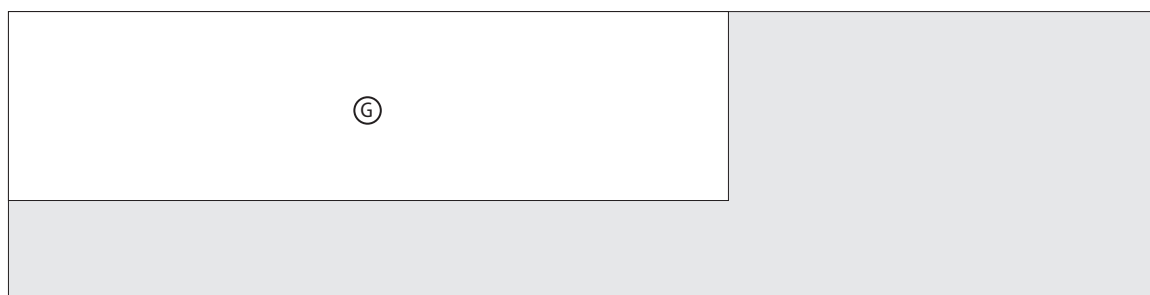
Ventilation / Wiring slot

FRONT VIEW

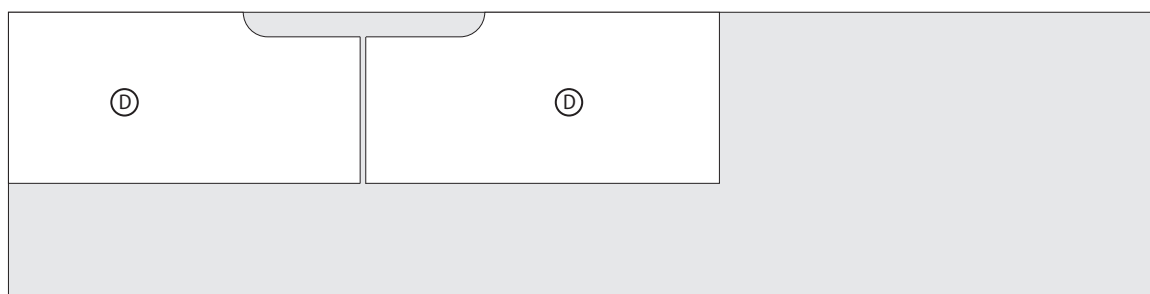
# Cutting Diagram



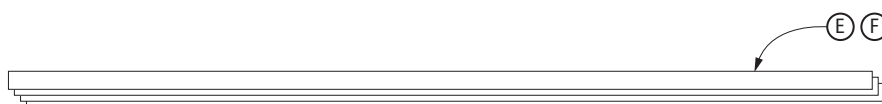
3/4 x 48 x 96" Oak Plywood



3/4 x 24 x 96" Fir Plywood



1/4 x 24 x 96" Hardboard



(4) 1/2 x 1-1/2 x 72" Oak strips

## MATERIALS AND HARDWARE LIST

Project: **TV Cabinet**

Issue:

**311**

CODE	DESCRIPTION	QTY.	Dim1	Frac.	Dim2	Frac.	Dim3	Frac.	Material
Heading									
<b>A</b>	Case Top & Bottom	(2)	15	x	58 1/2	-	3/4		Oak Ply
<b>B</b>	Case Ends	(2)	15	x	15	-	3/4		Oak Ply
<b>C</b>	Case Dividers	(2)	15	x	13 1/2	-	3/4		Oak Ply
<b>D</b>	Case Back	(2)	14 1/4	x	29 1/4	-	1/4		Hd Bd
<b>E</b>	Top & Bottom long spacers	(4)	1 1/2	x	58 1/2	-	1/4		Oak
<b>F</b>	Top & Bottom short spacers	(6)	1 1/2	x	12	-	1/4		Oak
<b>G</b>	Top and Bottom	(2)	15 3/4	x	60	-	3/4		Oak Ply
<ul style="list-style-type: none"> <li>• 3/4" oak iron-on edge banding</li> <li>• (4) 3/4 x 14-7/8w x 15"h custom made doors w/o glass</li> <li>• (4) 1/8 x 10-3/4 x 10-7/8" "squares" textured glass. Rockler #38821</li> <li>• (32) Glass retainer clips. Rockler #32887</li> <li>• (4) 6" Polished aluminum legs. TableLegsOnline.com # sedona-6-pa</li> <li>• 1-1/4" pocket screws</li> <li>• #8 x 1-1/2" flat head wood screws</li> <li>• (1) #10 x 1" round head wood screws</li> </ul>									

# GET A FREE ISSUE AND A FREE BOOK

## Look at what you'll get...

- Free Preview of Workbench Magazine
- Free Storage Solutions Book
- Time and Money-Saving **Tips**
- Projects with **Step-by-Step** How-to's
- Your Home Improvement **Questions Answered**
- **Practical ideas** to Add Style & Value to Your Home
- Tools and Product **Advice**



[www.WorkbenchMagazine.com](http://www.WorkbenchMagazine.com)



Offer subject to change