



Thank You!

You have successfully downloaded your document from Workbenchmagazine.com. Below are some tips for Trouble-Free Printing

- 1)** Clear printer memory. If you are unable to print this document, turn off your printer for at least 15 seconds and try again.

- 2)** Print two or three pages at a time. If clearing the printer memory didn't help, try printing only two or three pages at one time, rather than sending the entire file

- 3)** If a document is required to be at an accurate scale set the page scaling option to "none" in your printer settings.

- 4)** Get advanced printer help. Visit Adobe Support for instructions in troubleshooting common printer problems.

<http://www.adobe.com/support/techdocs/316508.html>

MATERIALS LIST



MATERIAL LIST

Part	Qty	Size	Material	
CABINET				
A	CABINET ENDS	2	¾" x 16" x 34"	Melamine
B	CABINET BOTTOM	1	¾" x 16" x 42½"	Melamine
C	UPPER BACK STRETCHER	1	¾" x 3½" x 42½"	Pine
D	LOWER BACK STRETCHER	1	¾" x 3½" x 42½"	Pine
E	FRONT STRETCHER	1	¾" x 3½" x 42½"	Pine
F	CLEATS	2	¾" x ¾" x 26¼"	Pine
G	DIVIDER	1	¾" x 15¾" x 33¼"	Melamine
H	BACK PANEL	1	¼" x 33¼" x 42½"	Hardboard
I	TOP PANEL	1	¾" x 16¼" x 44"	Pre-glued Pine
TRAYS				
J	TRAY BOTTOM	4	¾" x 13¼" x 18¾"	Melamine
K	FRAME FRONTS	4	¾" x 2½" x 20⅞"	Pine
L	FRAME BACKS	4	¾" x 2½" x 18¾"	Pine
M	FRAME SIDES	8	¾" x 2½" x 14"	Pine

HARDWARE:

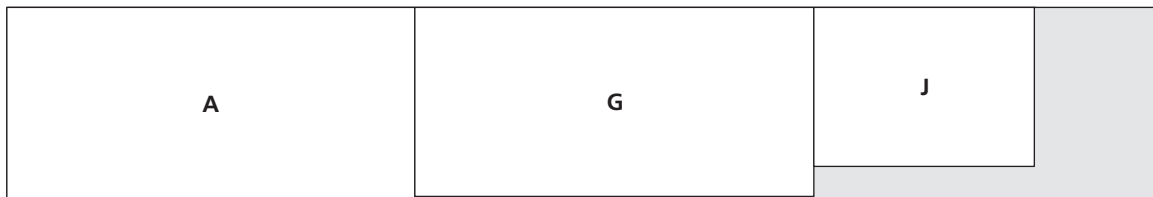
- (62) 7mm x 50mm Connecting Screws*
- (8) #8 x 1¼" Fh Woodscrews
- (22) #8 x ⅝" Fh Woodscrews
- (4) #8 x 1¼" Ph Sheet Metal Screws
- (4) ¾" Fender Washers
- (10) #14 x 1¼" Ph Sheet Metal Screws
- (44) 1¼" Pocket Screws
- (6) ¼"-20 Carriage Bolts, 1½" long
- (6) ¼" Locking Nuts
- (6) ¼" Washers
- (4 pr.) 14" Full-Extension Drawer Slides

*Order Starter Kit #7050-CSP-A (includes 100 connecting screws, 100 caps, stepped drill bit, driver bit) from McFeelys.com

CUTTING DIAGRAM



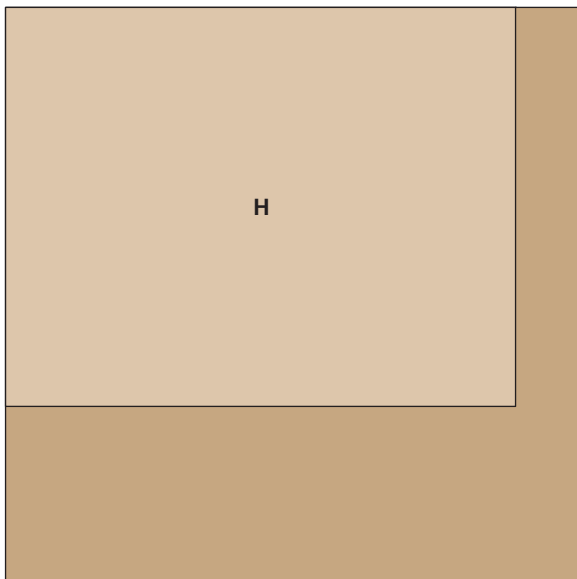
$\frac{3}{4}$ x 16 x 96 MELAMINE



$\frac{3}{4}$ x 16 x 96 MELAMINE



$\frac{3}{4}$ x 16 x 48 MELAMINE



$\frac{1}{4}$ x 48 x 48 TEMPERED HARDBOARD

CUTTING DIAGRAM



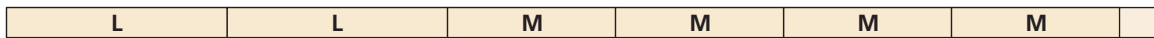
1 x 4 x 96 POPLAR



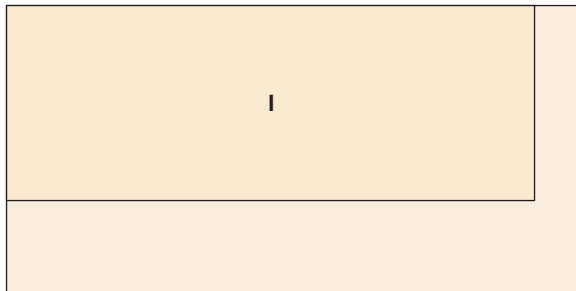
1 x 4 x 96 POPLAR



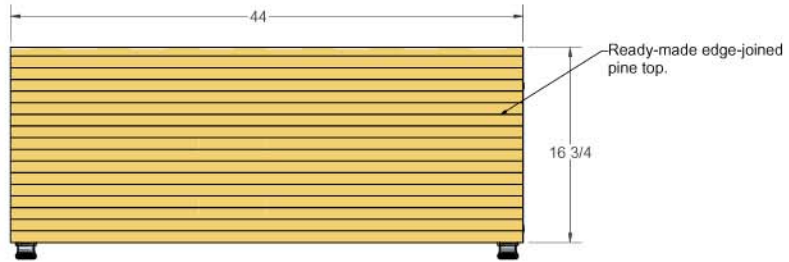
1 x 3 x 96 POPLAR



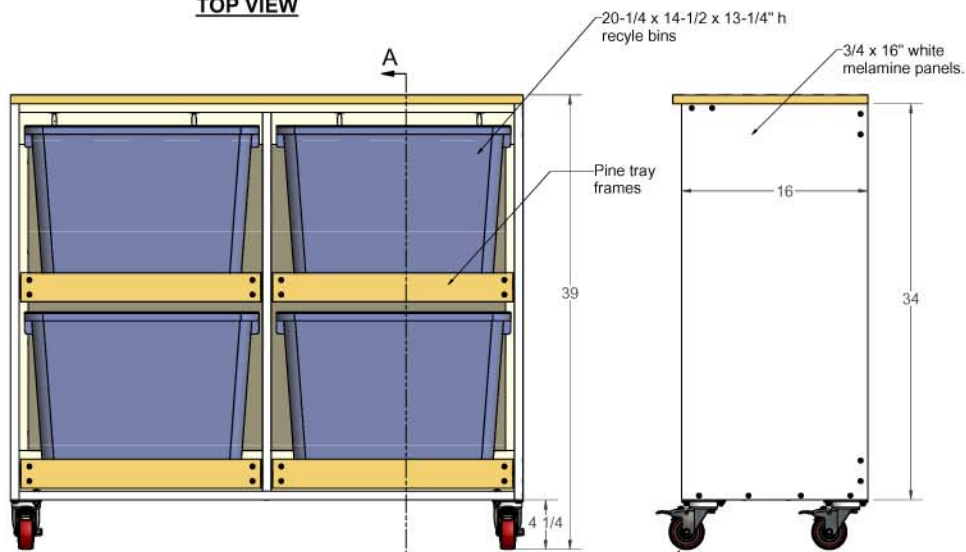
1 x 3 x 96 POPLAR (2 BOARDS)



$\frac{3}{4}$ x 24 x 48 LAMINATED PINE

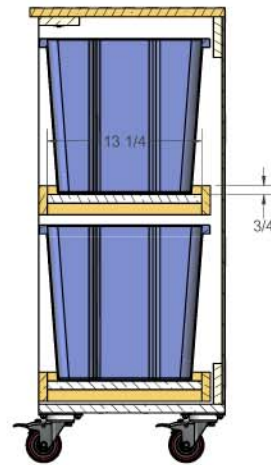


TOP VIEW

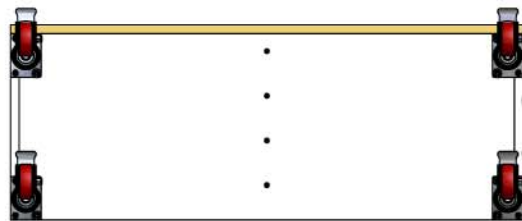


FRONT VIEW

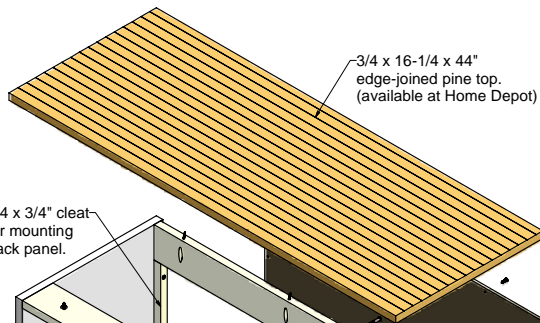
END VIEW



SECTION A-A

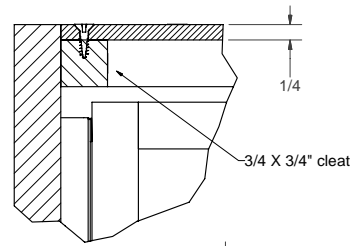


BOTTOM VIEW



3/4 x 16-1/4 x 44" edge-joined pine top. (available at Home Depot)

3/4 x 3/4" cleat for mounting back panel.



DETAIL A

1/4 x 33-1/4 x 42-1/2" hardboard back

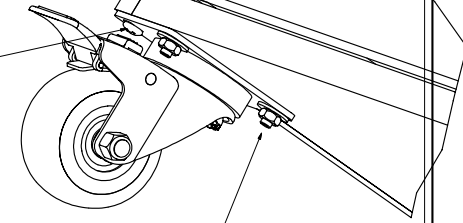
Attach back with #8 x 5/8" FHWS

Attach top with pocket screws along back edge.

Attach top with #8 x 1-1/4" pan head sheet metal screws and fender washers, through 1/2" hole on front stretcher.

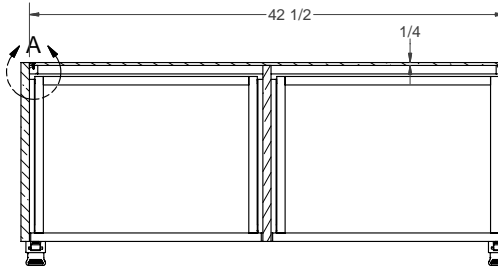
Assemble cabinet with 7 x 50mm confirmat screws (also called cabinet connecting screws) Cover screws with white plastic caps.

#14 PH Sheet metal screws, 1-1/2" long into end panel.

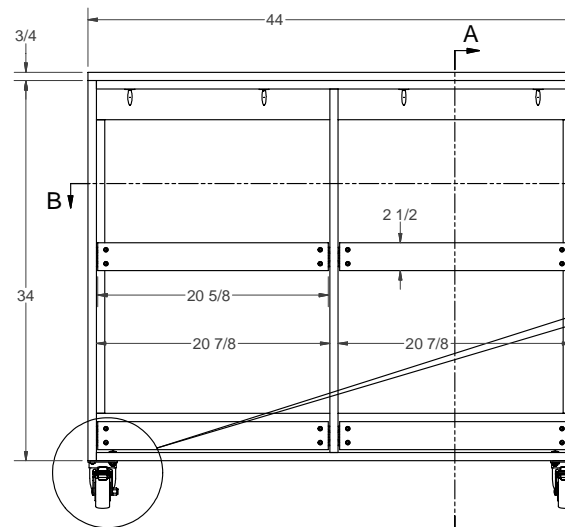


1/4" CB, 1-1/4" long through bottom panel.

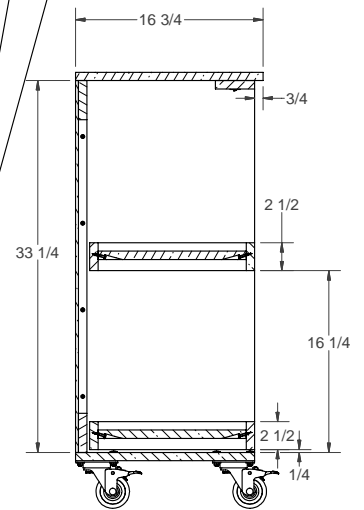
CASTER DETAIL



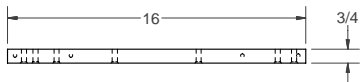
SECTION B-B



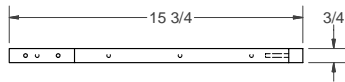
FRONT VIEW



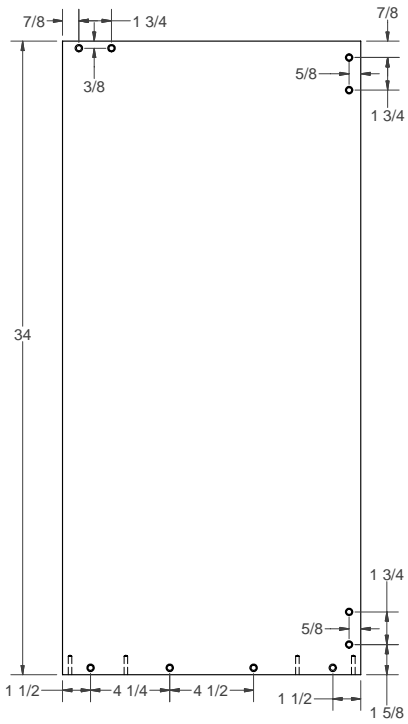
SECTION A-A



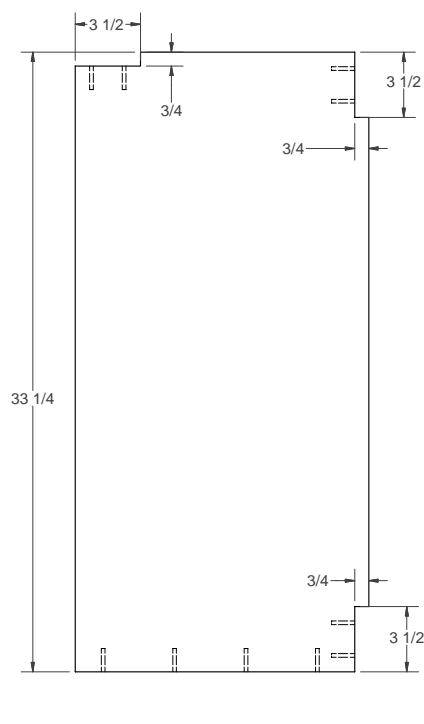
TOP VIEW



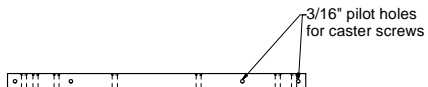
TOP VIEW



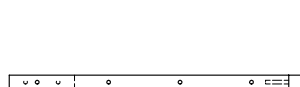
RIGHT SIDE PANEL



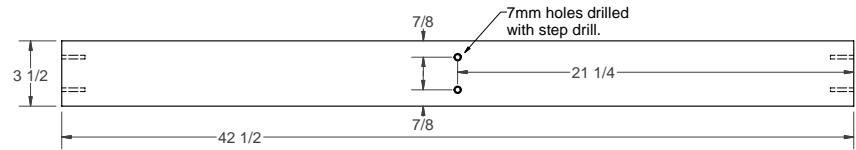
CENTER PANEL



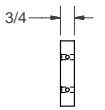
BOTTOM VIEW



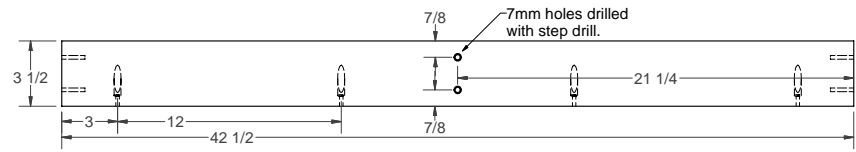
BOTTOM VIEW



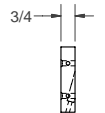
REAR BOTTOM STRETCHER



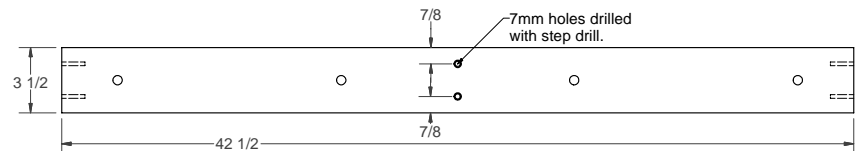
END VIEW



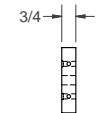
REAR TOP STRETCHER



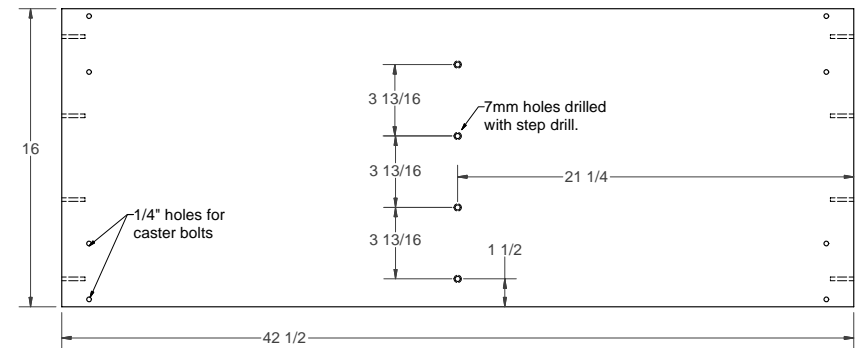
END VIEW



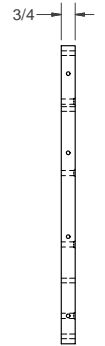
FRONT TOP STRETCHER



END VIEW



BOTTOM PANEL



END VIEW

