



# Thank You!

---

**You have successfully downloaded your document from Workbenchmagazine.com. Below are some tips for Trouble-Free Printing**

- 1)** Clear printer memory. If you are unable to print this document, turn off your printer for at least 15 seconds and try again.
  
- 2)** Print two or three pages at a time. If clearing the printer memory didn't help, try printing only two or three pages at one time, rather than sending the entire file
  
- 3)** If a document is required to be at an accurate scale set the page scaling option to "none" in your printer settings.
  
- 4)** Get advanced printer help. Visit Adobe Support for instructions in troubleshooting common printer problems.

<http://www.adobe.com/support/techdocs/316508.html>

## MATERIALS LIST



### BUYER'S GUIDE

#### WASHER & DRYER

**Whirlpool Duet Washer and Dryer**

866.698.2538

[Whirlpool.com](http://Whirlpool.com)

(Supplied by O'Callaghan's - 515.276.3232)

#### SINK & FAUCET

**American Standard Silhouette Sink**

800.442.1902

[AmericanStandard-US.com](http://AmericanStandard-US.com)

**Pegasus Side-Action Faucet/Sprayer**

800.553.3199

[HomeDepot.com](http://HomeDepot.com)

#### IRONING BOARD

**Rev-A-Shelf Fold-Out Ironing Board**

502.499.5835

[Rev-A-Shelf.com](http://Rev-A-Shelf.com)

#### LAUNDRY BAGS

(2) Laundry Bags for Bagger Org. System

877.631.2922

[Skyburst.com](http://Skyburst.com)

#### PROJECT HARDWARE

(8) 26mm Blum Clip-on Hinges (#38411)

(6) Lift-O-Mat Gas Springs (#34373)

Folding L-Brackets (#58377)

White Surface-Mount Puck Lights (#25315)

22" Full-Extension Drawer Slides (#30230)

800.279.4441

[Rockler.com](http://Rockler.com)

(7) 5" Polished Chrome Handles (BBK-03592)

866.695.6627

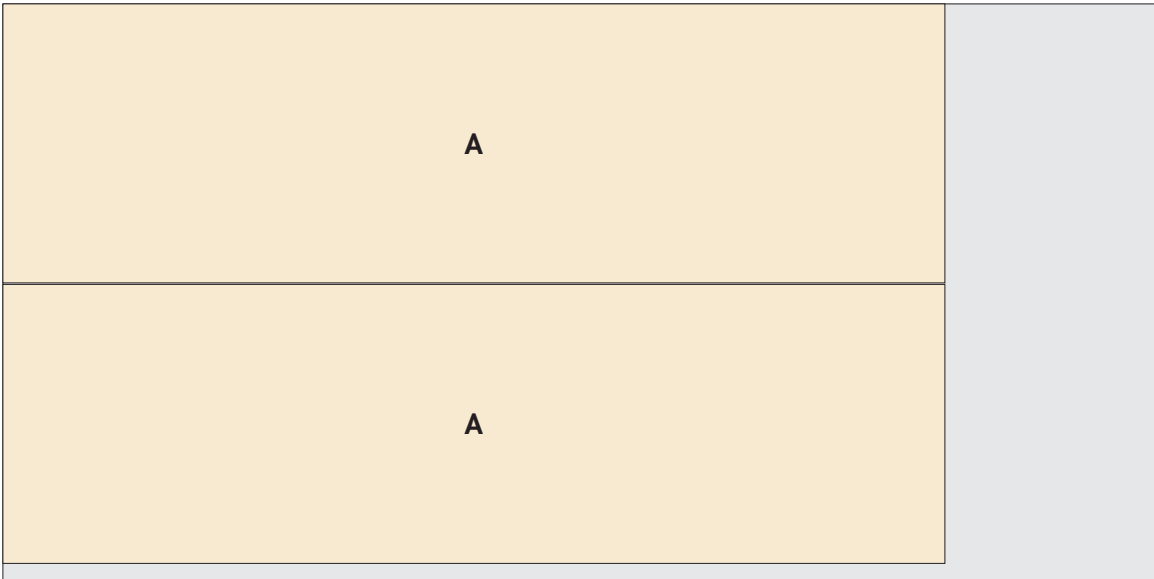
[MyKnobs.com](http://MyKnobs.com)

### MATERIAL LIST

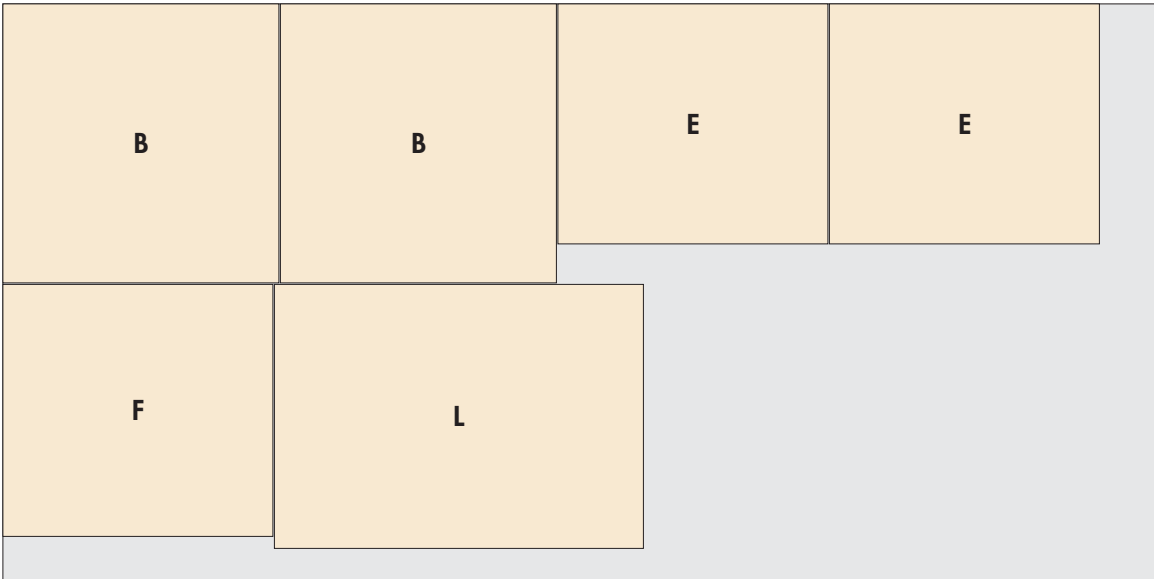
Part	Qty	Size	Material
STORAGE TOWER			
A	SIDES	2	¾" x 23¼" x 78½"
B	TOP/BOTTOM	2	¾" x 23" x 23¼"
C	TOWER BACK	1	¼" x 23½" x 78½"
D	MOUNTING CLEAT	1	¾" x 3½" x 22½"
E	TOP/BTTM. SHELF	2	¾" x 20" x 22½"
F	MIDDLE SHELF	1	¾" x 21" x 22½"
G	TP/BTTM. SUPPORT	4	¾" x ¾" x 19"
H	MIDDLE SUPPORT	2	¾" x ¾" x 17½"
I	BASE SIDES	2	¾" x 3½" x 18½"
J	BASE FRONT/BACK	2	¾" x 3½" x 24"
K	TOWER DOOR	1	¾" x 24" x 78½"
L	WORK TABLE	1	¾" x 22" x 30¾"
M	MOUNT. BLOCKS	2	1½" x 3½" x 11"
N	RACK ARMS	2	¾" x 2" x 41"
O	RACK RAILS	2	¾"-dia. x 16"
SINK CABINET			
P	CABINET SIDES	2	¾" x 23¼" x 31"
Q	CABINET BOTTOM	1	¾" x 23" x 35"
R	CABINET BACK	1	¼" x 31" x 35½"
S	BASE SIDES	2	¾" x 3½" x 18½"
T	BASE FRONT/BACK	2	¾" x 3½" x 36"
U	DIVIDER	1	¾" x 23¼" x 31"
V	COUNTER CLEATS	2	¾" x 2" x 34½"
W	CABINET CLEATS	2	¾" x 3" x 16⅞"
X	CABINET DOOR	1	¾" x 17⅓⁄₁₆" x 26¼"
LAUNDRY BIN			
Y	HANGER RODS	2	¾"-dia. x 22¾"
Z	FRONT PANEL	1	¾" x 17⅓⁄₁₆" x 26¼"

Part	Qty	Size	Material
AA	BACK PANEL	1	¾" x 13¾" x 25¼"
BB	BOTTOM PANEL	1	¾" x 14⅞" x 22"
CC	BASE SIDES	2	¾" x 2½" x 22"
DD	BASE FRONT/BACK	2	¾" x 1¾" x 14⅞"
EE	RAILS	2	¾" x 3½" x 22"
FF	FALSE FRONTS	2	¾" x 4½" x 17⅓⁄₁₆"
NARROW UPPER CABINET			
GG	END PANELS	2	¾" x 24" x 78"
HH	SIDES	2	¾" x 16" x 17¼"
II	TOP/BOTTOM	2	¾" x 17" x 35"
JJ	BACK	1	¼" x 16" x 35½"
KK	MOUNTING CLEAT	1	¾" x 3" x 35"
WIDE UPPER CABINET			
LL	SIDES	2	¾" x 16" x 17¼"
MM	TOP/BOTTOM	2	¾" x 17" x 59"
NN	BACK	1	¼" x 16" x 59½"
OO	MOUNT. CLEATS	2	¾" x 3" x 29"
PP	DIVIDER	1	¾" x 15" x 17"
DOORS & SHELF			
QQ	DOOR STILES	6	¾" x 2" x 16"
RR	DOOR RAILS	6	¾" x 2" x 30¾"
SS	OPEN SHELF	1	¾" x 16" x 60"
TT	SHELF EDGING	2	¾" x 3" x 60"
UU	SHELF CLEATS	2	¾" x ¾" x 15¾"
VV	BACK PANEL	1	¼" x 10" x 60"

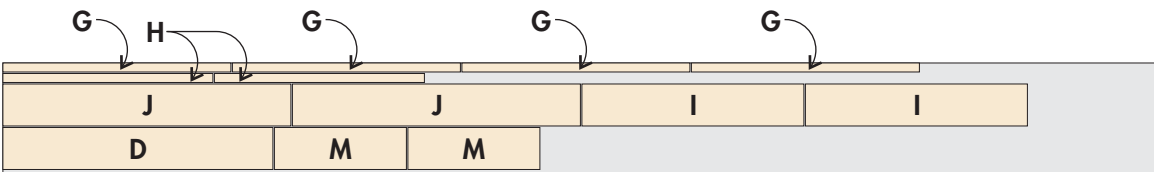
CUTTING DIAGRAM



3/4" x 48" x 96" White Melamine

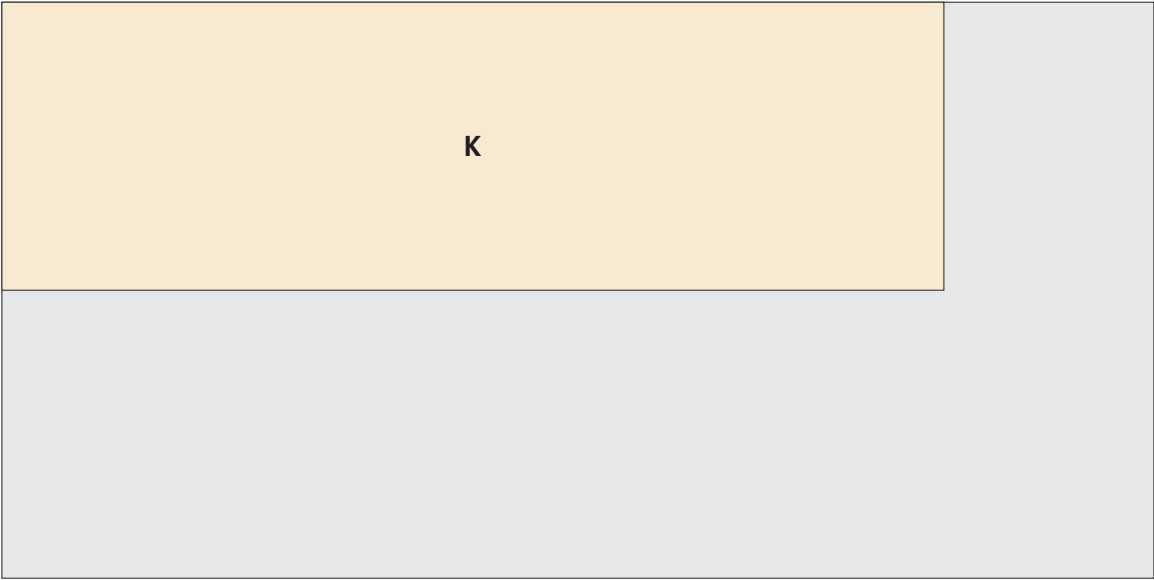


3/4" x 48" x 96" White Melamine

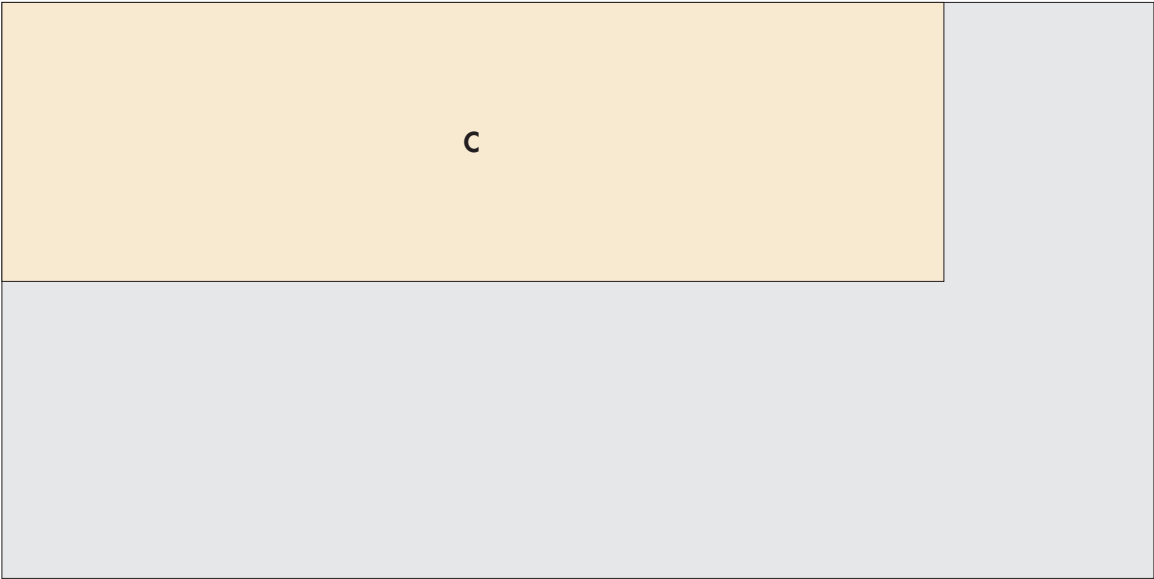


3/4" x 9-1/4" x 96" Pine

CUTTING DIAGRAM



3/4" x 48" x 96" Melamine

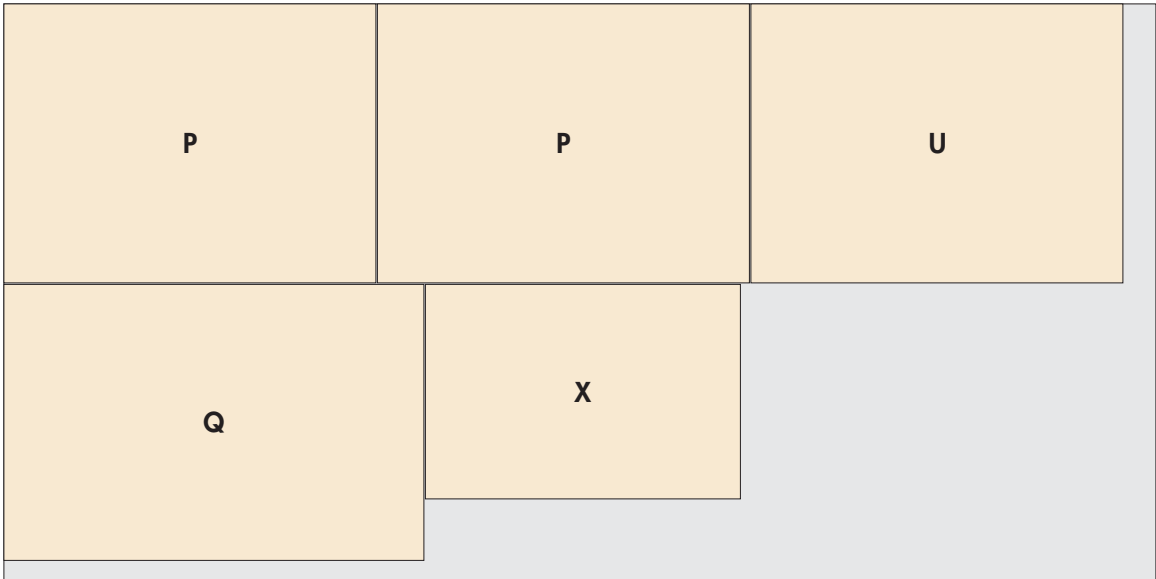


1/4" x 48" x 96" Hardboard

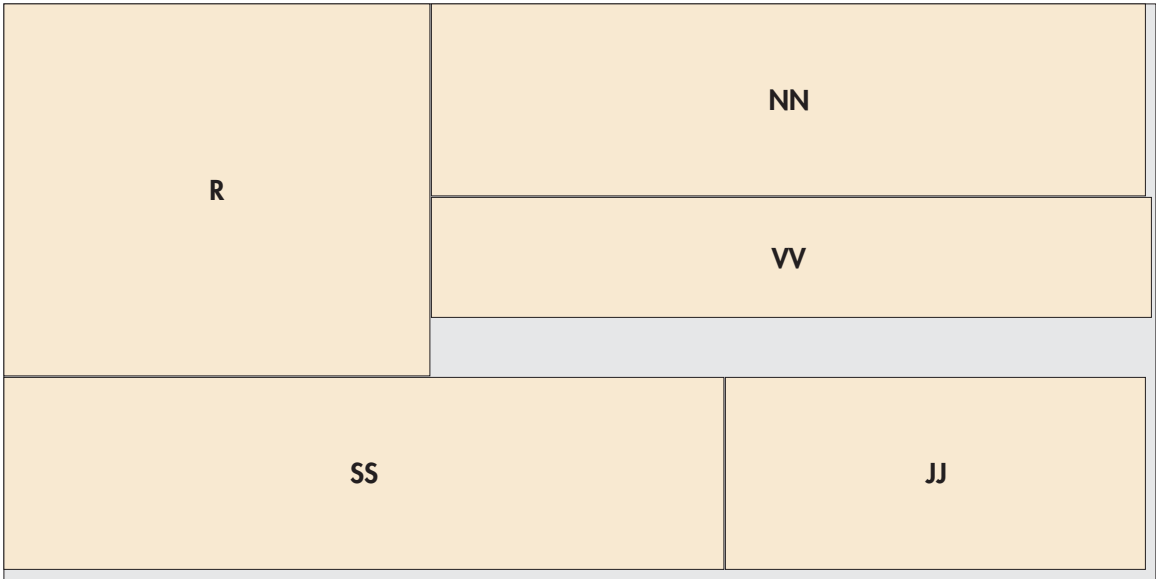


3/4" x 5-1/2" x 48" Oak

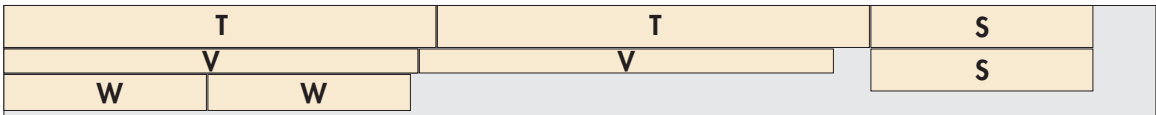
CUTTING DIAGRAM



3/4" x 48" x 96" White Melamine

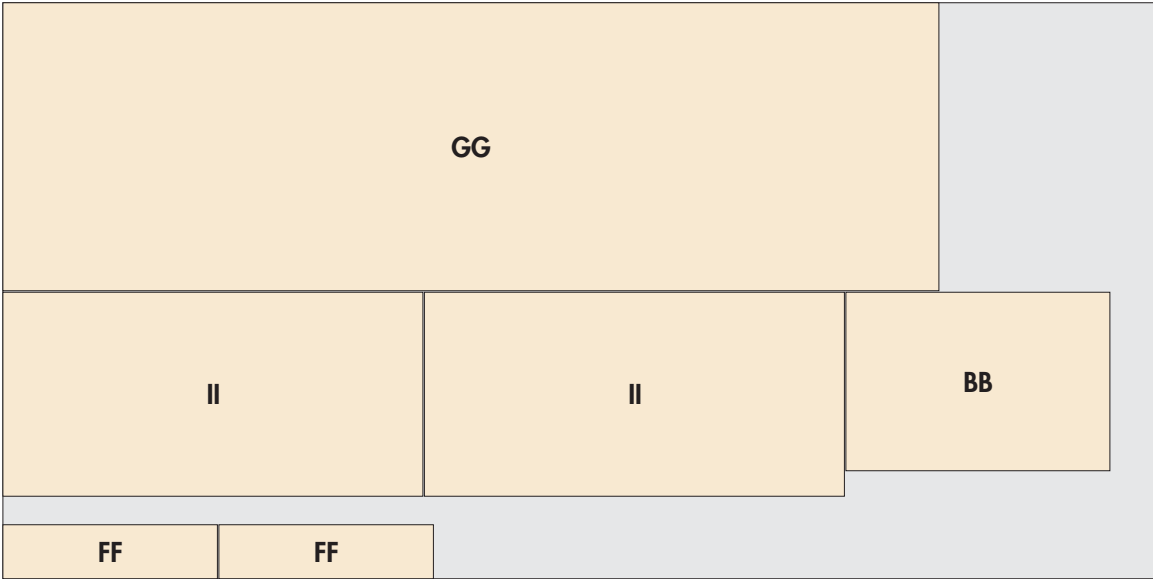


1/4" x 48" x 48" Hardboard

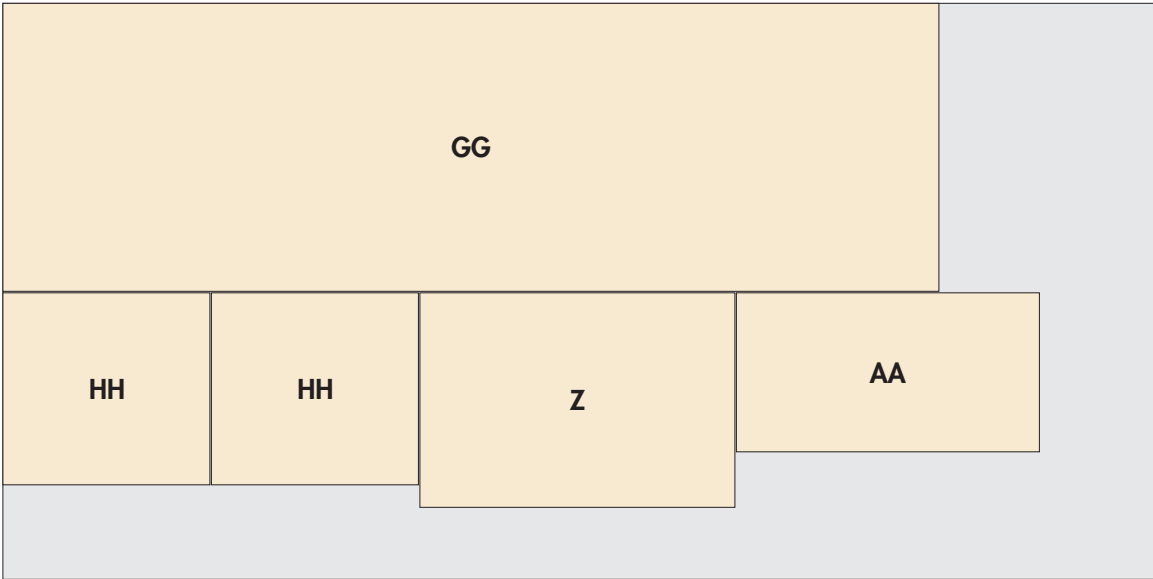


3/4" x 9-1/4" x 96" Pine

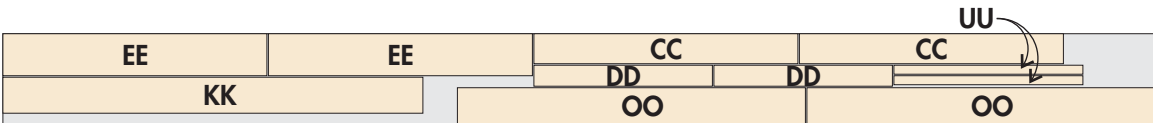
**CUTTING DIAGRAM**



**3/4" x 48" x 96" White Melamine**

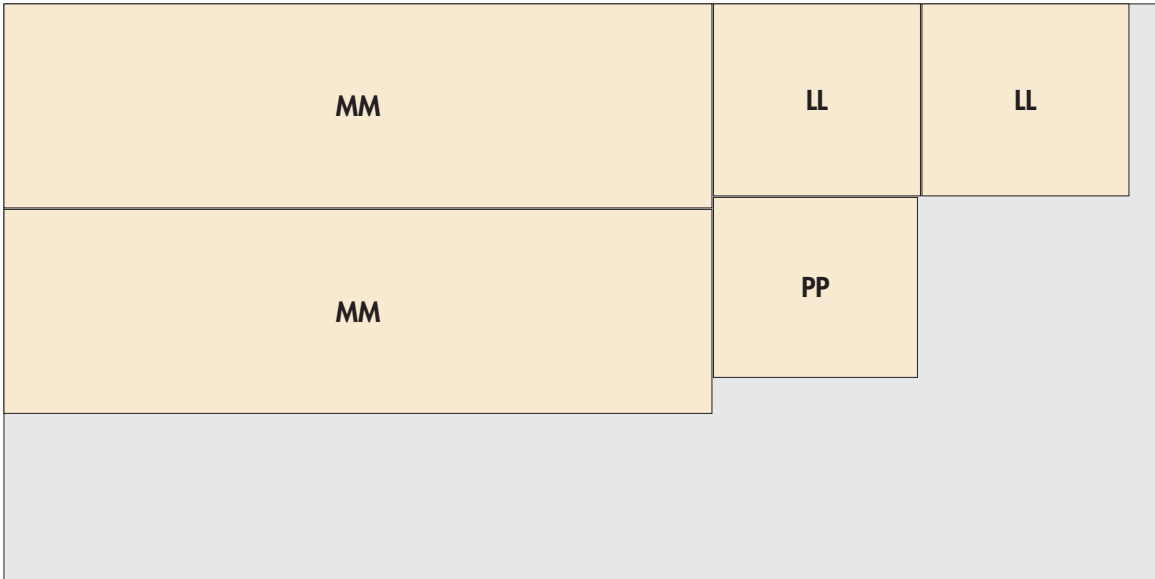


**3/4" x 48" x 96" White Melamine**

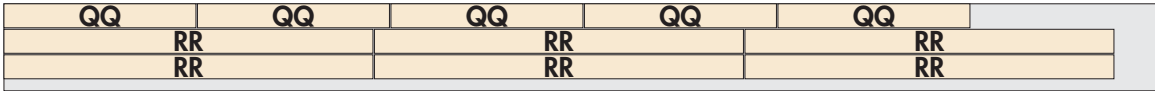


**3/4" x 5-1/2" x 96" Oak**

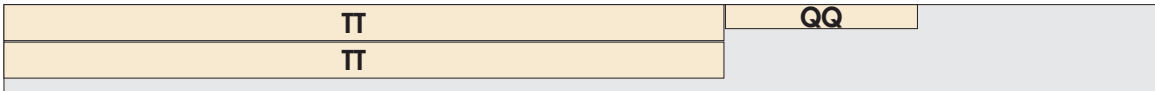
CUTTING DIAGRAM



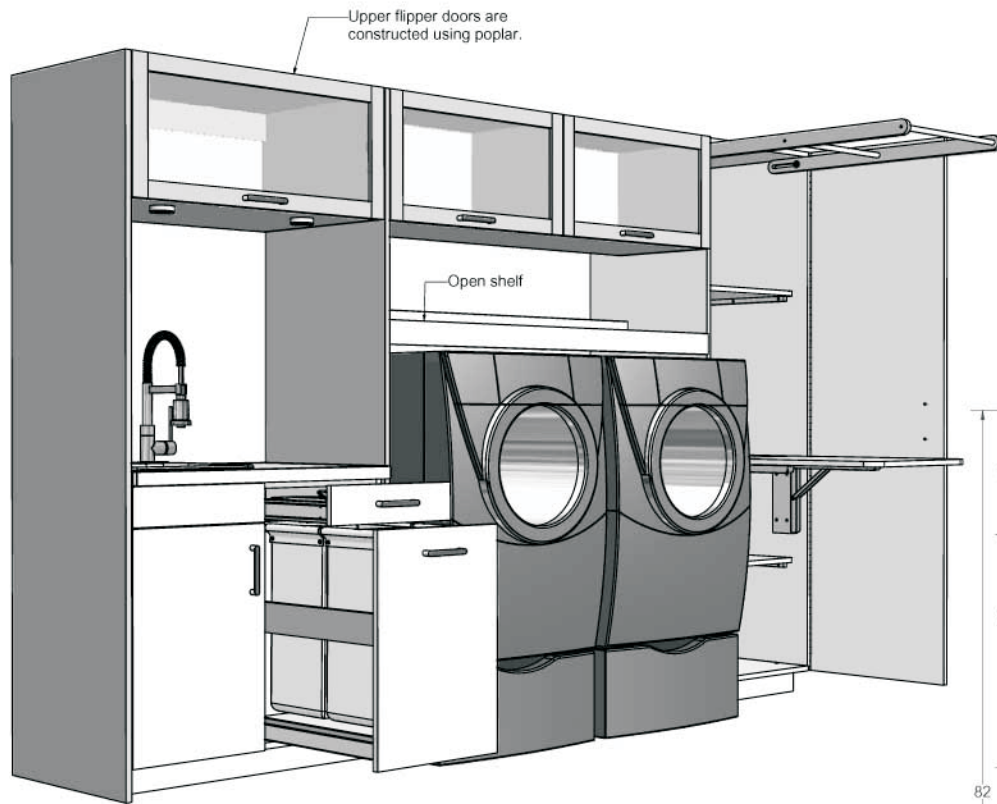
3/4" x 48" x 96" White Melamine



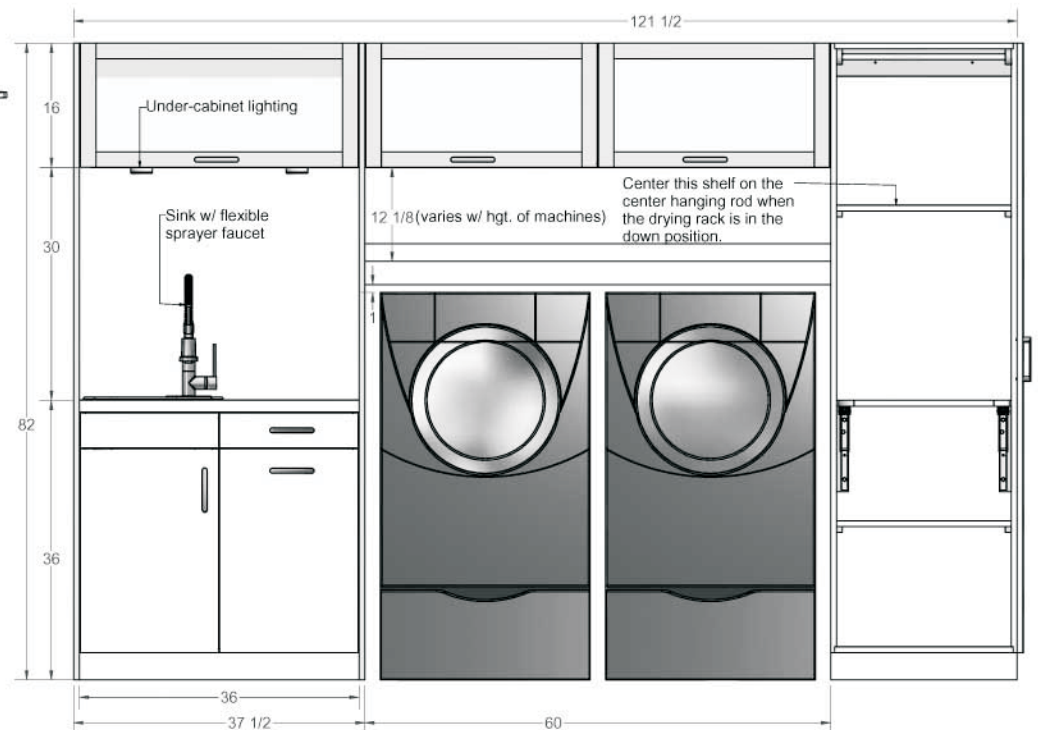
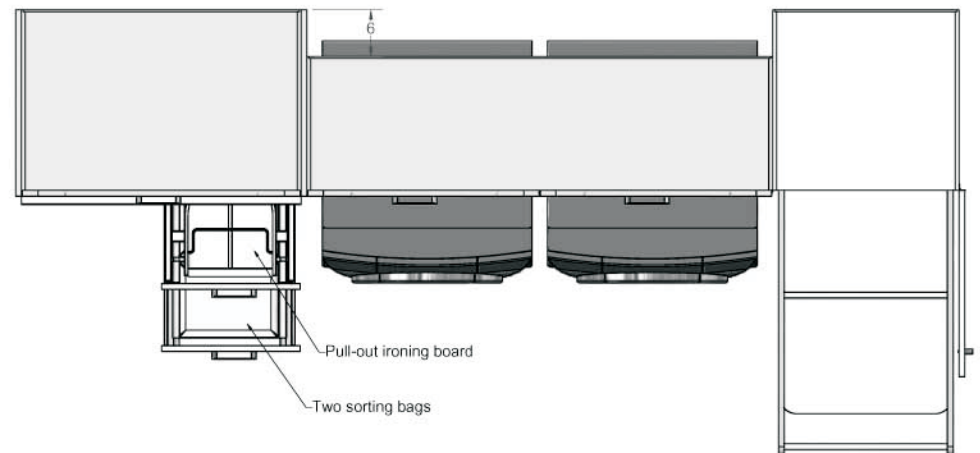
3/4" x 7-1/4" x 96" Poplar



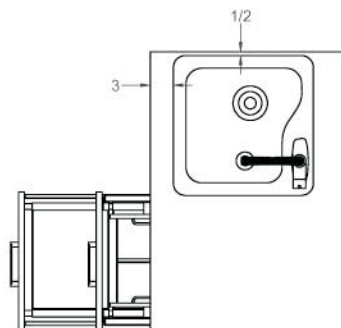
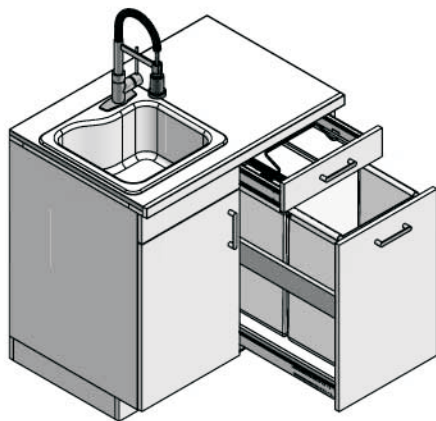
3/4" x 7-1/4" x 96" Poplar



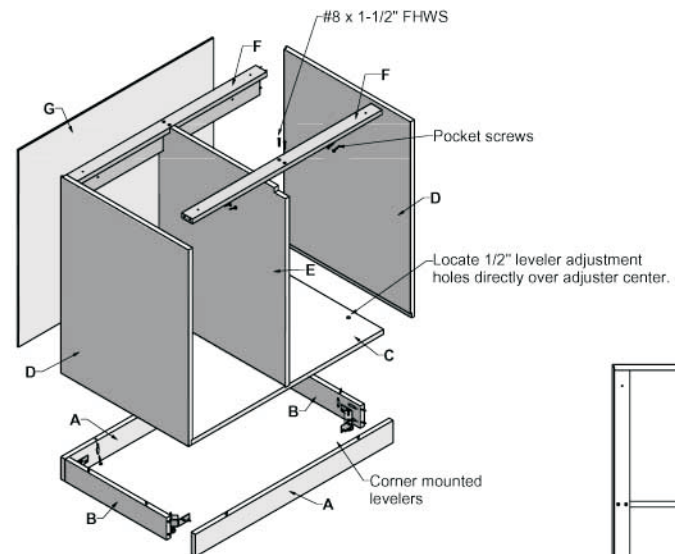
Note: Cabinets are constructed using white Melamine. All exposed edges are covered with white edge tape.



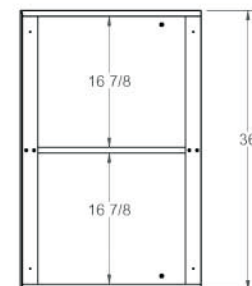




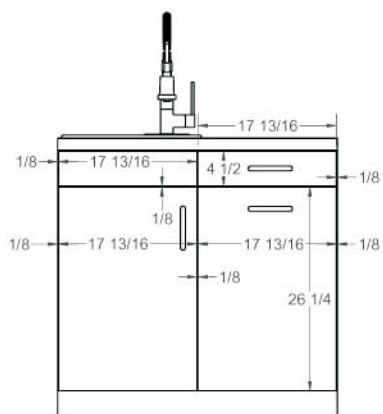
**Top View**



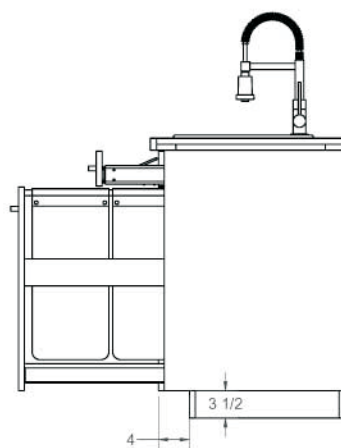
**Carcase Construction**



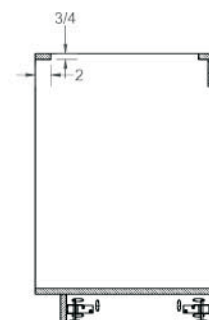
**Top View**



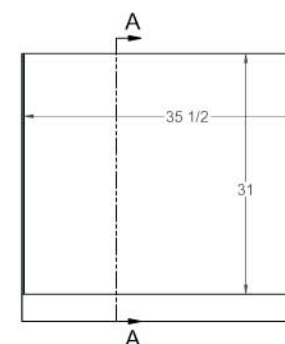
**Front View**



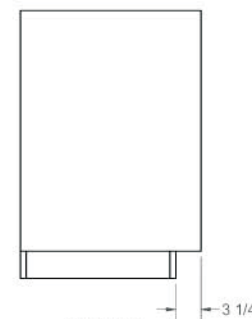
**Side View**



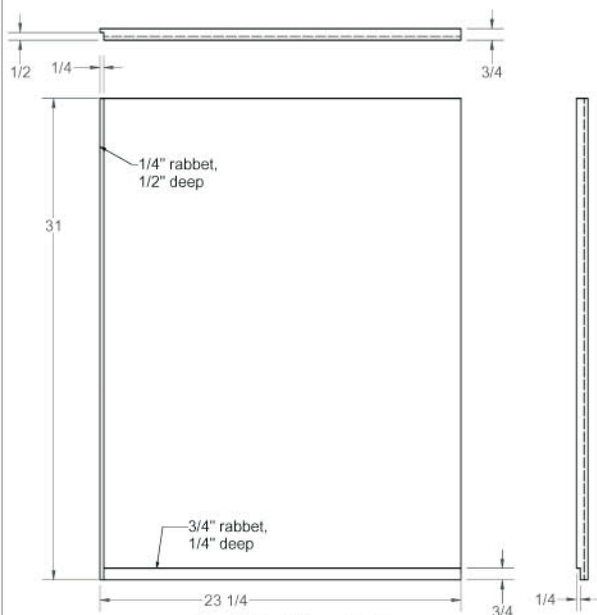
**SECTION A-A**



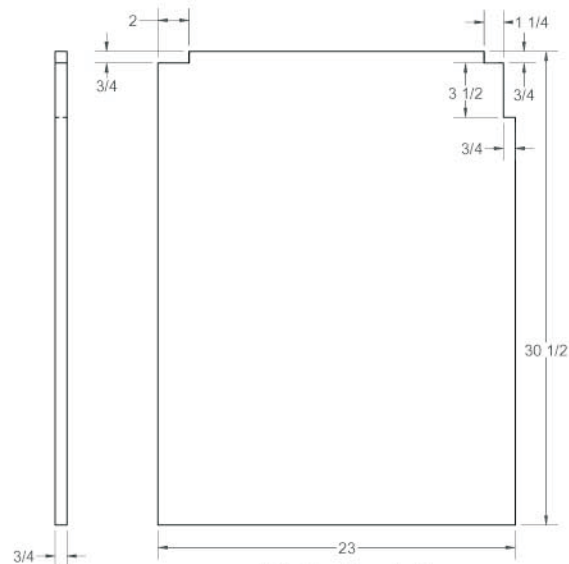
**Back View**



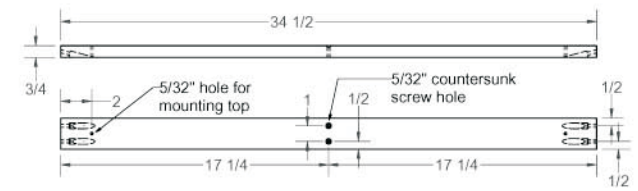
**Side View**



**Right End Panel - D**  
(left panel mirrored image)



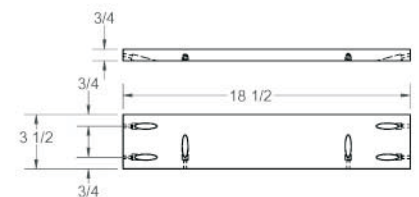
**Divider Panel - E**



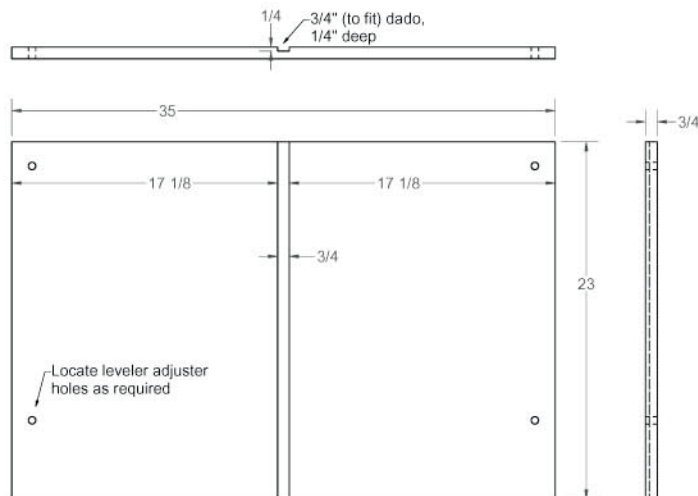
**Top Mount Cleats - F**



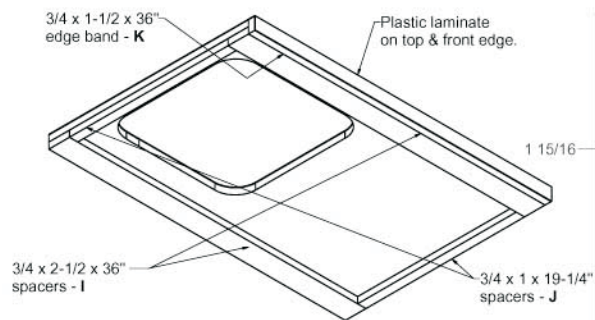
**Base - Front/Rear - A**



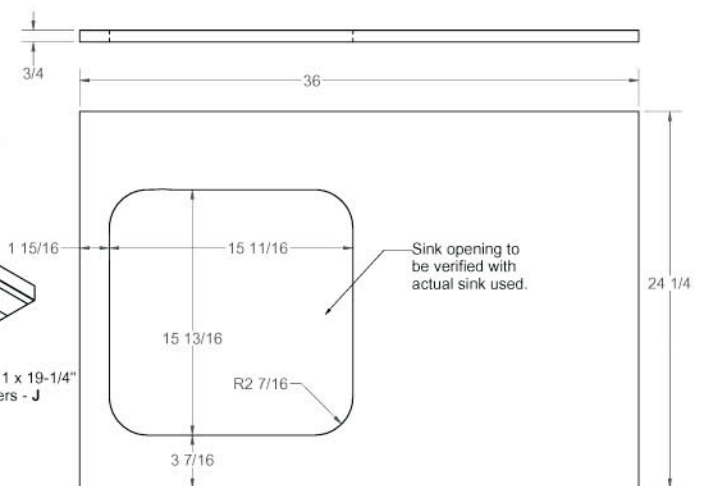
**Base - Sides - B**



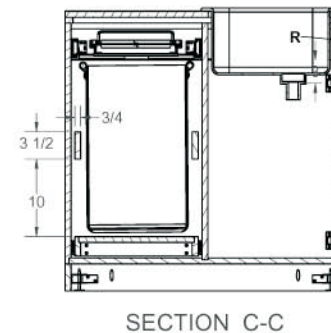
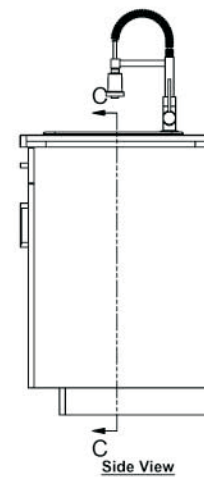
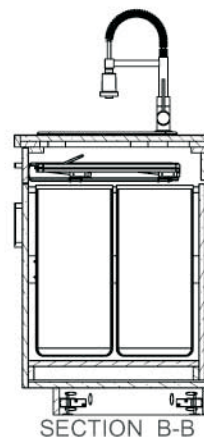
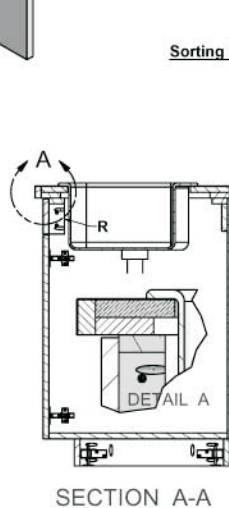
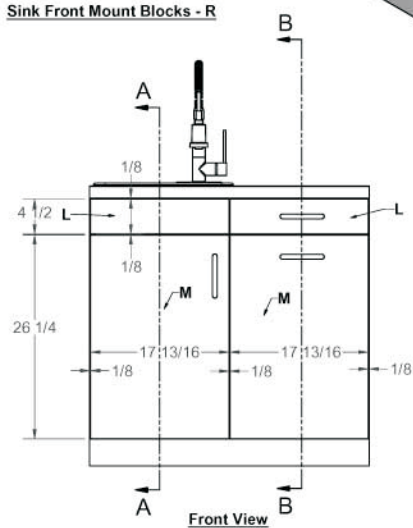
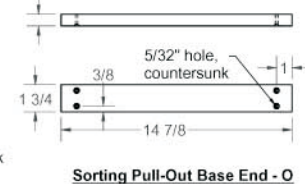
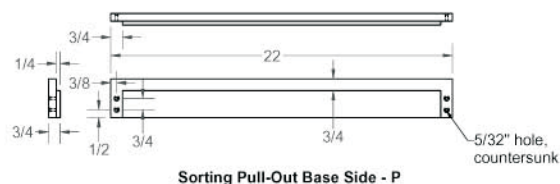
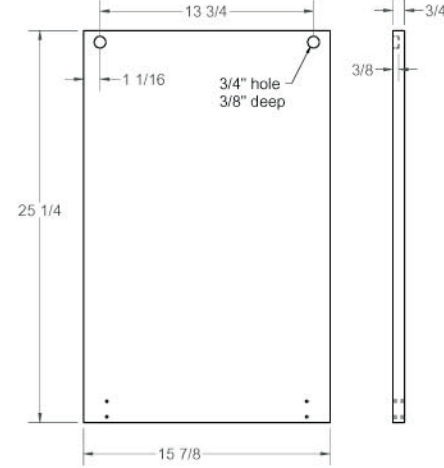
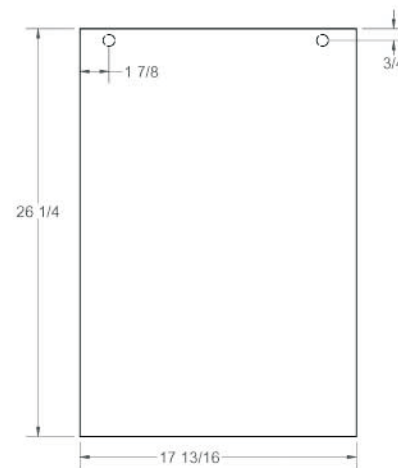
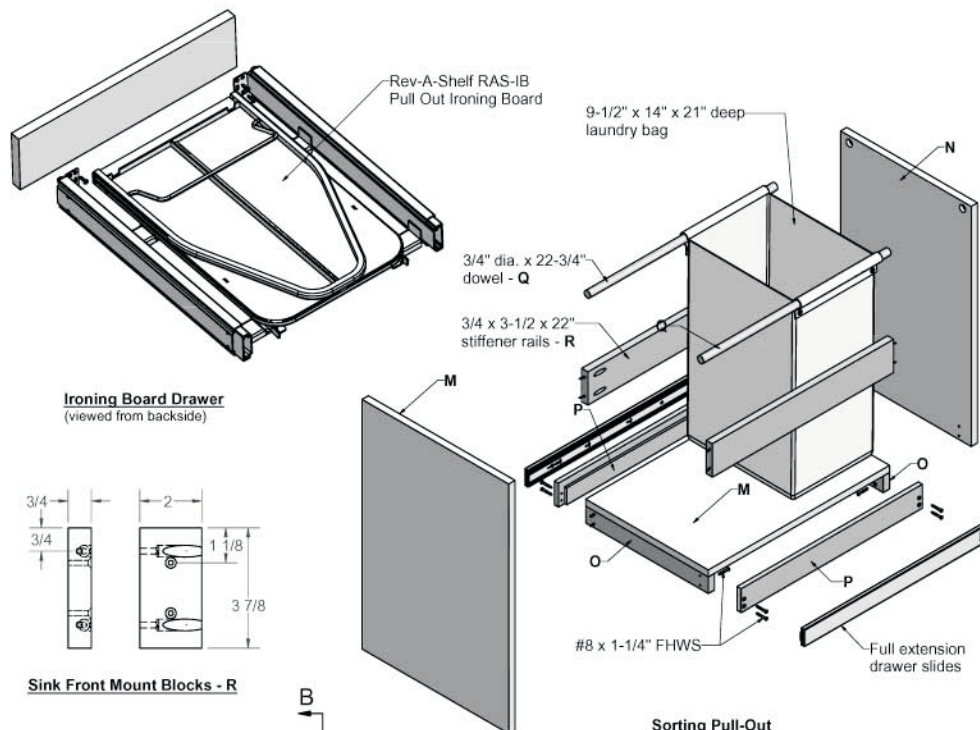
**Bottom Panel - C**

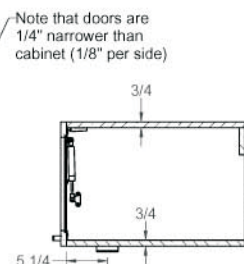
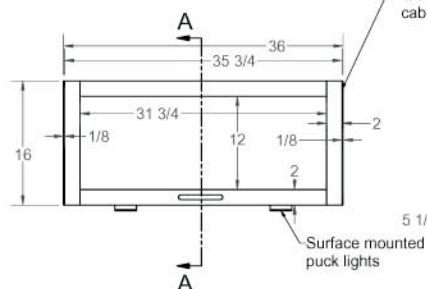
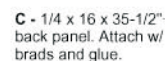
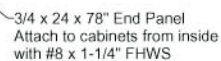


**Top Viewed from Bottomside**

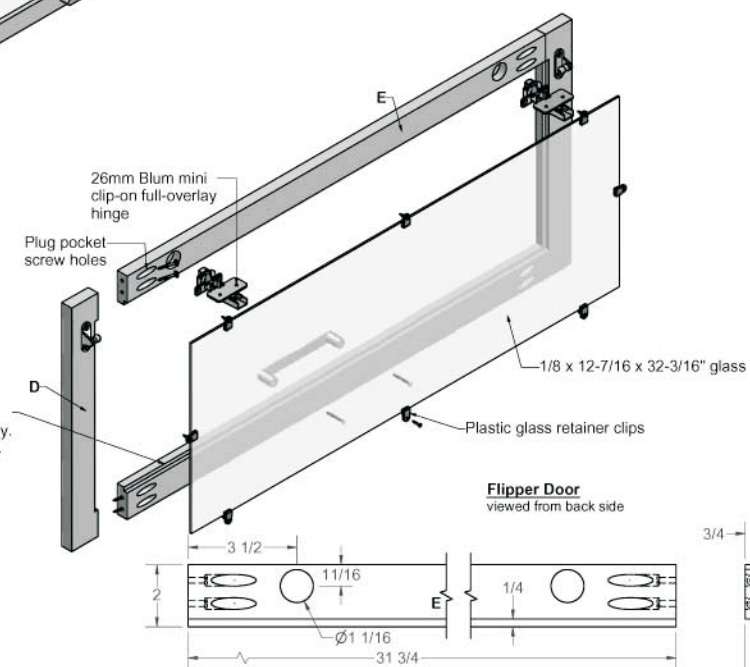


**Top Panel - H**

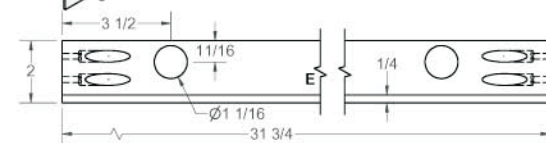




Cut 1/4x1/4" rabbet  
after door frame assembly.  
Square corners w/ chisel.

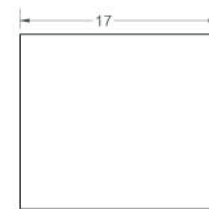
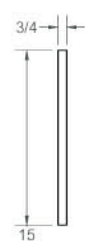
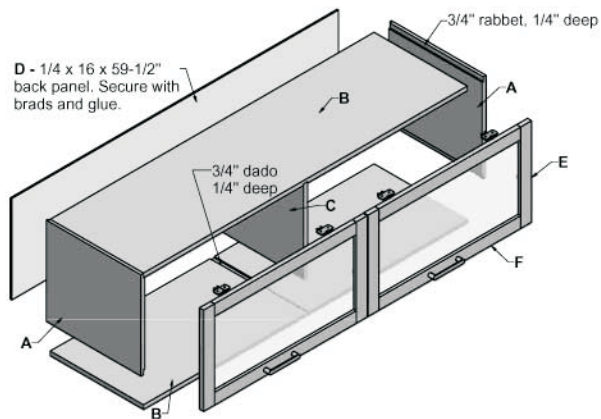


**Flipper Door**  
viewed from back side

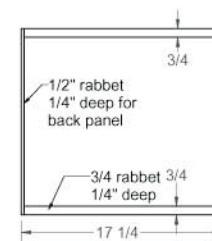
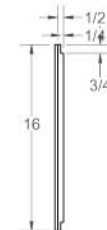


Upper Door Rail - E

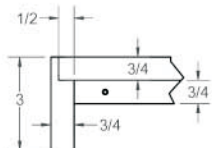
5 of 8



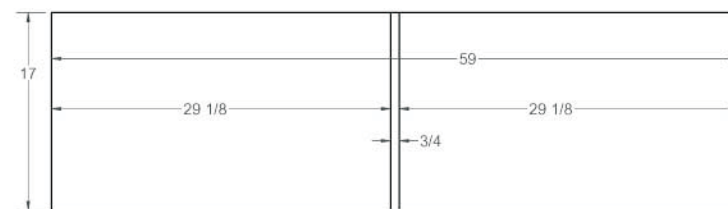
Center Panel - C



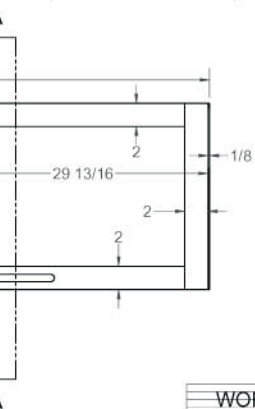
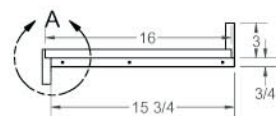
End Panels - A



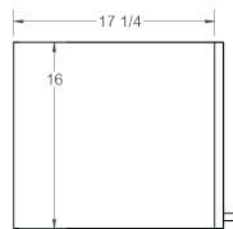
DETAIL A



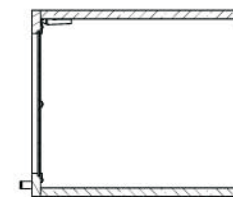
Top & Bottom Panels - B



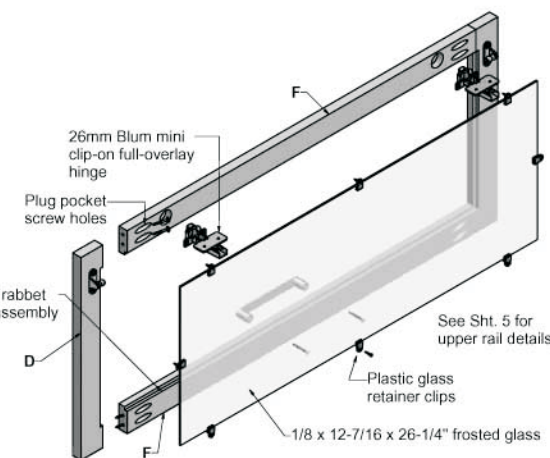
Front View



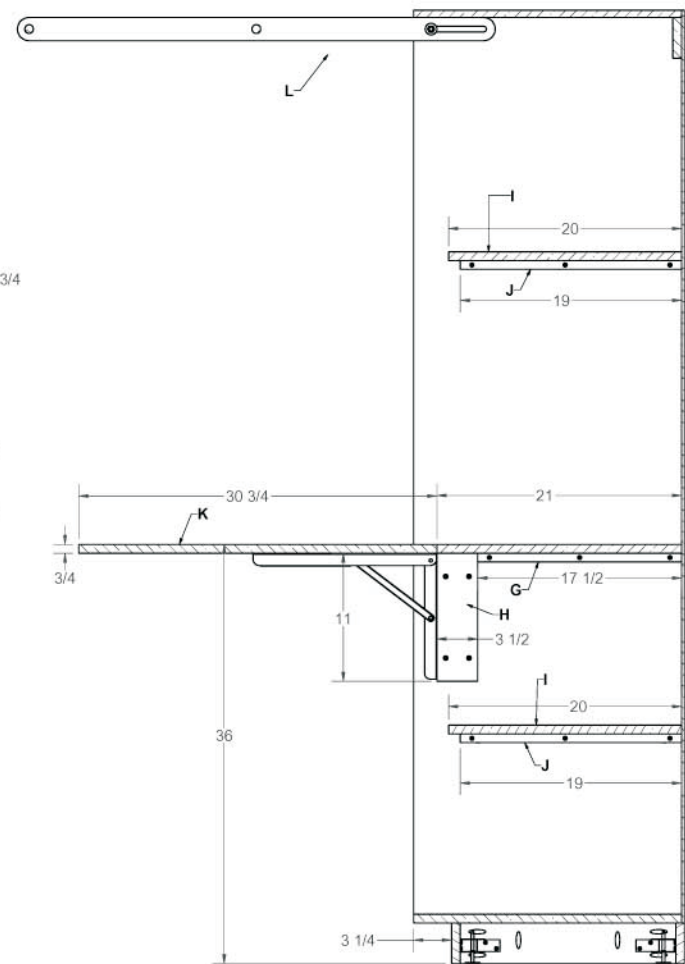
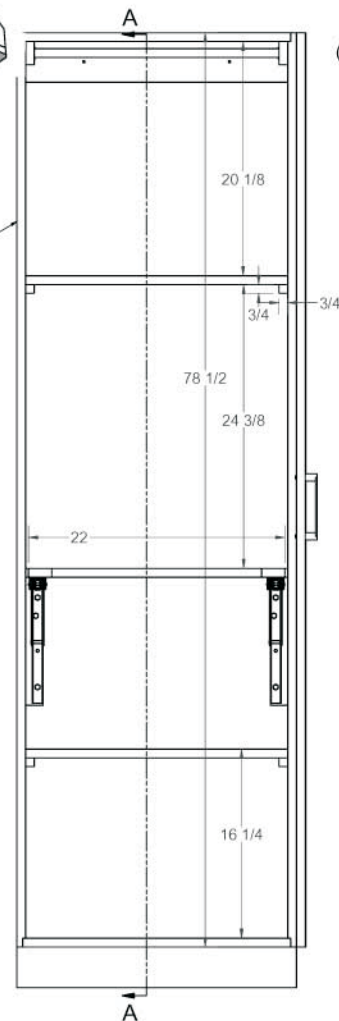
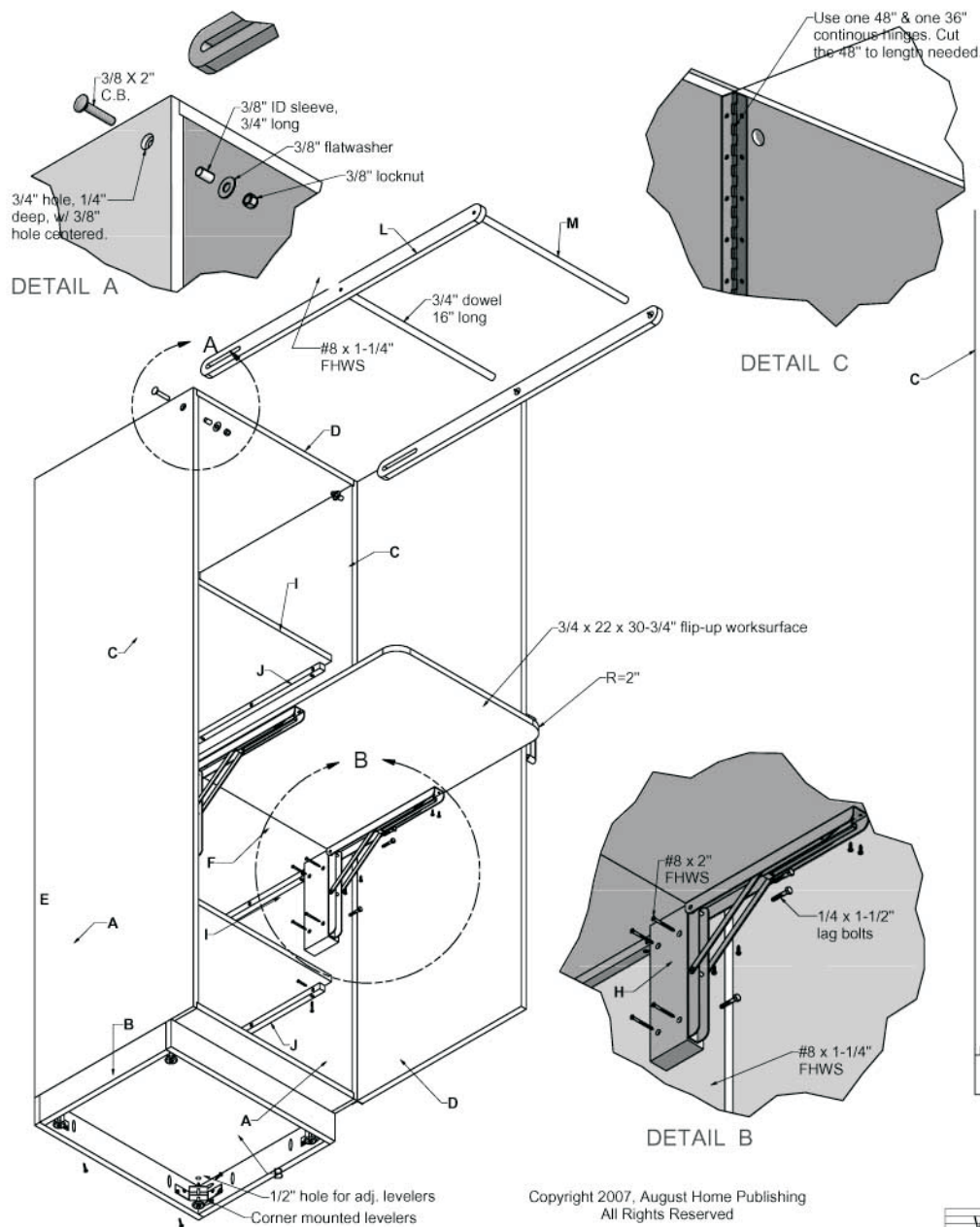
Side View



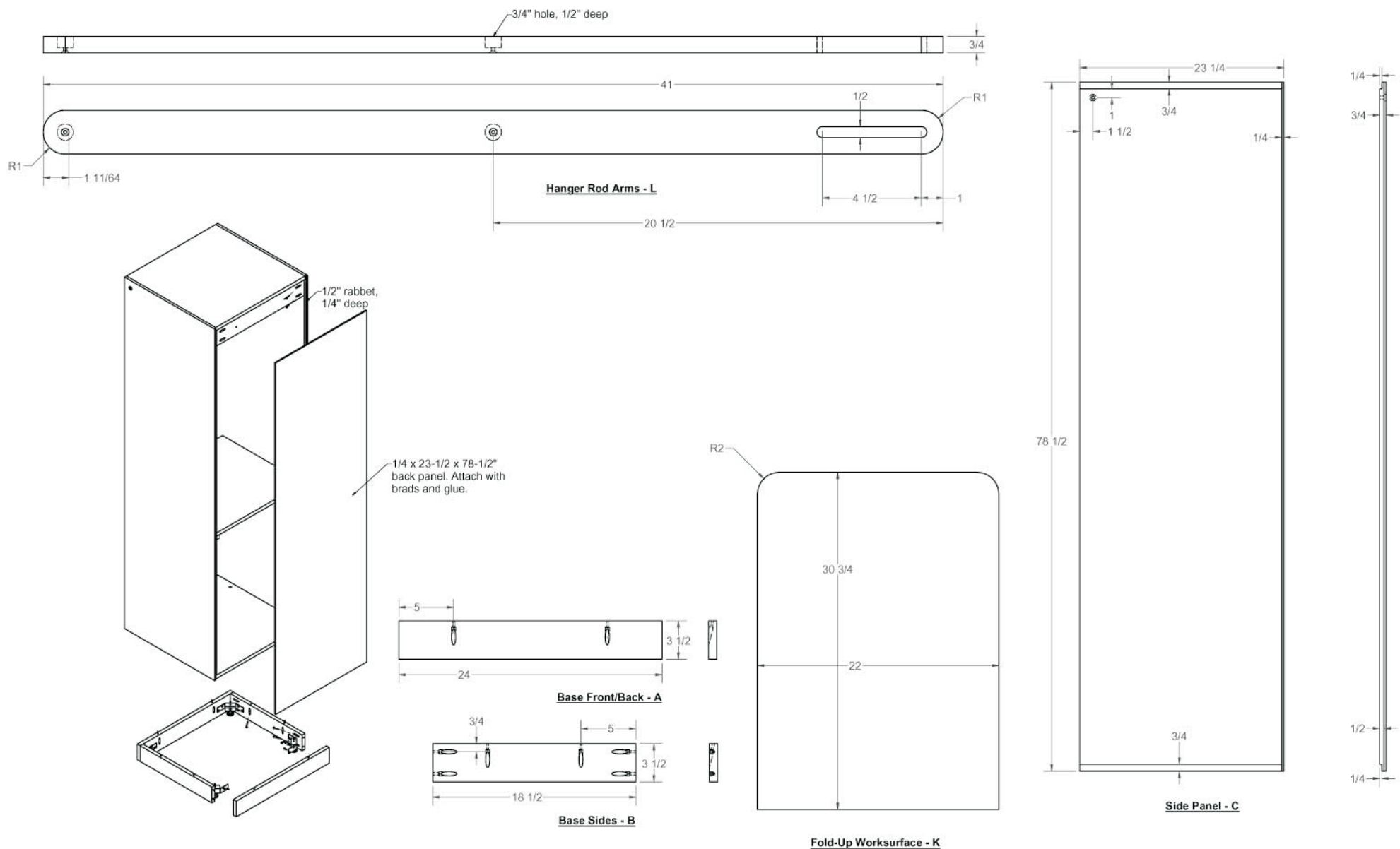
SECTION A-A







Copyright 2007, August Home Publishing  
All Rights Reserved



Copyright 2007, August Home Publishing  
All Rights Reserved

WORKBENCH #299

Storage Tower

DATE

PROJECT

8 of 8