



Thank You!

You have successfully downloaded your document from Workbenchmagazine.com. Below are some tips for Trouble-Free Printing

- 1)** Clear printer memory. If you are unable to print this document, turn off your printer for at least 15 seconds and try again.

- 2)** Print two or three pages at a time. If clearing the printer memory didn't help, try printing only two or three pages at one time, rather than sending the entire file

- 3)** If a document is required to be at an accurate scale set the page scaling option to "none" in your printer settings.

- 4)** Get advanced printer help. Visit Adobe Support for instructions in troubleshooting common printer problems.

<http://www.adobe.com/support/techdocs/316508.html>

MATERIALS LIST

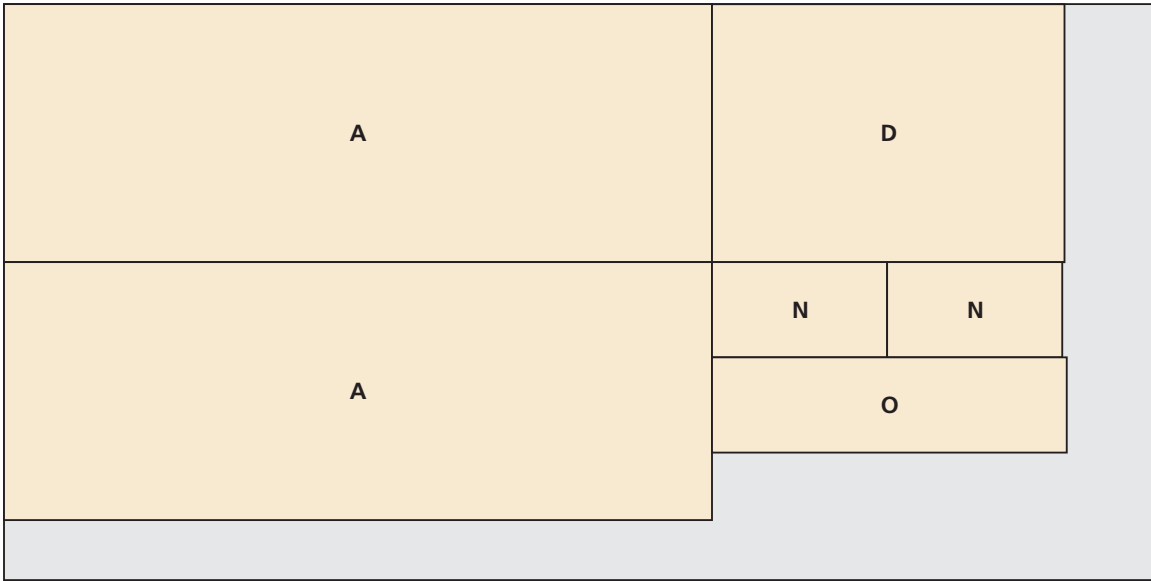


MATERIAL LIST

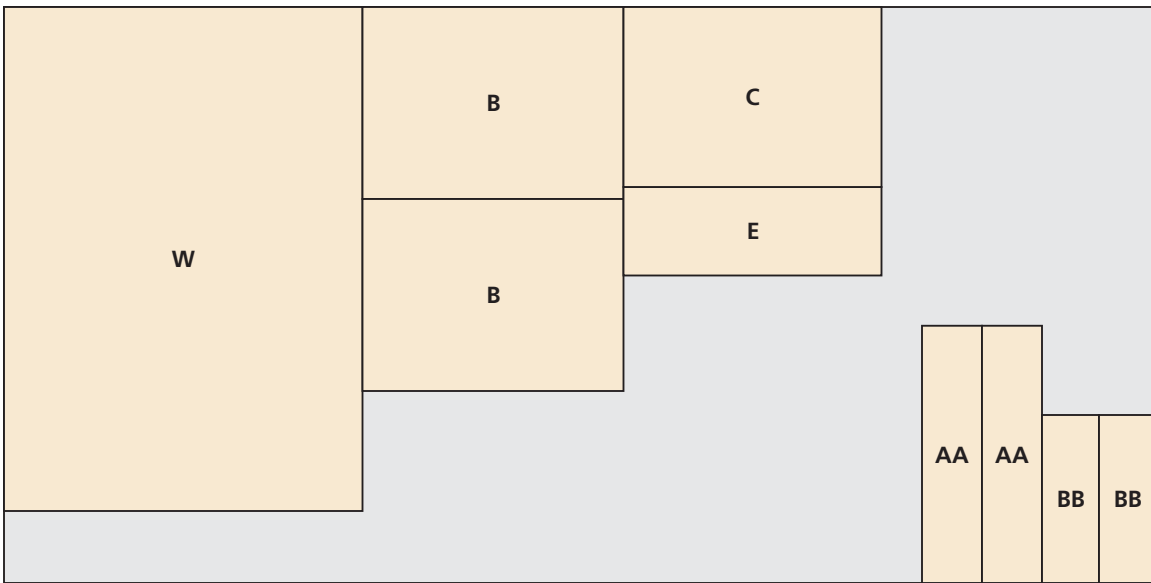
Part	Qty	Size	Material	Part	Qty	Size	Material
VANITY CASE				WALL PANEL			
A	2	3/4" x 21 1/2" x 59"	Oak Plywood	W	1	3/4" x 42" x 29 7/8"	Oak Plywood
B	2	3/4" x 16" x 21 3/4"	Oak Plywood	X	1	1/8" x 3/4" x 42"	Oak
C	1	3/4" x 15" x 21 1/2"	Oak Plywood	Y	2	3/4" x 6 3/4" x 14 1 5/16"	MDF
D	1	3/4" x 21 1/2" x 29 3/8"	Oak Plywood	Z	1	3/4" x 6 3/4" x 29 1 5/16"	MDF
E	1	3/4" x 7 3/8" x 21 1/2"	Oak Plywood	MEDICINE CABINET			
F	2	3/4" x 2" x 58 1/2"	Oak	AA	2	3/4" x 21 7/16" x 5"	Oak Plywood
G	1	1/4" x 16" x 59 1/2"	Oak Plywood	BB	2	3/4" x 14" x 4 3/4"	Oak Plywood
H	1	1/4" x 3/4" x cut to fit	Oak	CC	1	1/4" x 14 1/2" x 21 7/16"	Oak Plywood
DRAWERS				DD	1	1/4" x 3/4" x cut to fit	Oak
I	4	1/2" x 6 1/2" x 13 1/16"	Poplar	EE	2	3/4" x 4 7/8" x 13 1/16"	Poplar
J	2	1/2" x 6 1/2" x 27 7/8"	Poplar	FF	2	3/4" x 2 1/2" x 9 7/8"	Poplar
K	6	1/2" x 6 1/2" x 20"	Poplar	GG	2	3/4" x 2 1/2" x 21 1/16"	Poplar
L	2	1/4" x 12 9/16" x 20"	Oak Plywood	HH	1	1/4" x 1/4" x cut to fit	Poplar
M	1	1/4" x 27 3/8" x 20"	Oak Plywood	LIGHTED VALANCE			
N	2	3/4" x 7 1 5/16" x 14 1 9/32"	Oak Plywood	II	2	1/4" x 6 5/8" x 59 1/2"	Hardboard
O	1	3/4" x 7 1 5/16" x 29 9/16"	Oak Plywood	JJ	1	3/4" x 1 1/2" x 60"	Poplar
P	1	1/8" x 3/4" x cut to fit	Oak	KK	2	3/4" x 1 1/2" x 6 7/8"	Poplar
DOORS				LL	1	1 1/2" x 1" x 58"	Pine/Fir
Q	4	3/4" x 2 1/2" x 9 1 5/16"	Poplar	HARDWARE (see Buyer's Guide for Pulls & Glass):			
R	4	3/4" x 2 1/2" x 16"	Poplar	• (40) #8 x 2" Fh Woodscrews			
S	1	1/4" x 1/4" x cut to fit	Poplar	• (50) #6 x 1" Fh Woodscrews			
VANITY COUNTERTOP				• (24) 1 1/4" Washer-head Pocket Screws			
T	1	1 1/2" x 22" x 59 1/4"	MDF	• (4) Flush-Mount Panel Clips (#00M85.02)*			
U	1	3/4" x 1 3/8" x 60"	Poplar	• (3 pr.) 107° Full-Overlay Hinges (#00B10.01)*			
V	1	3/4" x 1 3/8" x 22 3/4"	Poplar	• (3 pr.) 20" Full-Extension Drawer Glides (#02K36.20)*			
				• (1 pack) Dark Oxide Shelf Pins (#00S10.52)*			

*Items available from Lee Valley (LeeValley.com; 800-871-8158)

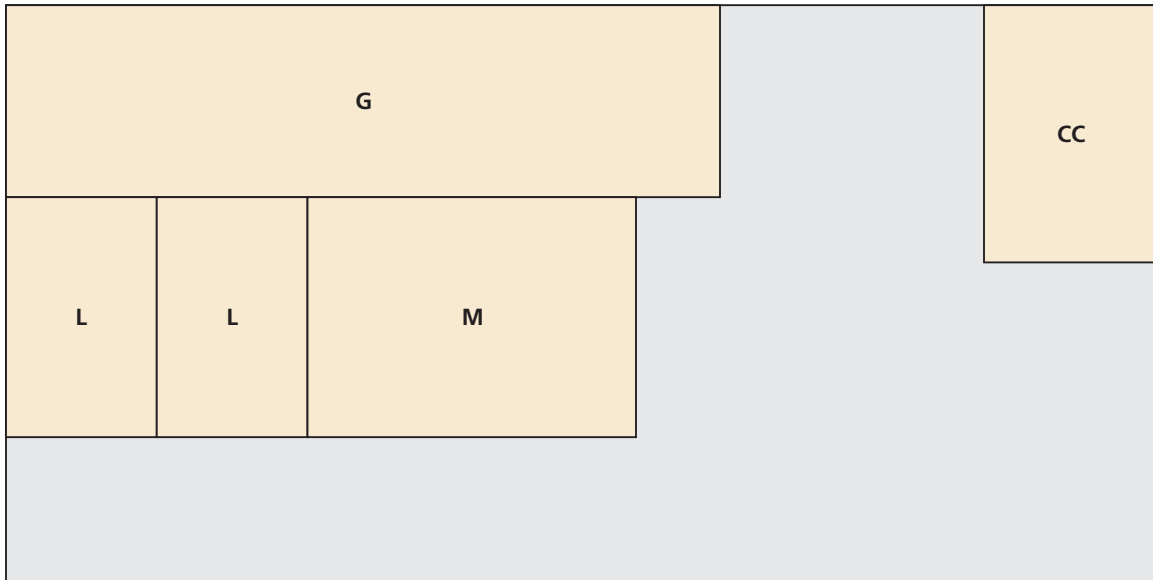
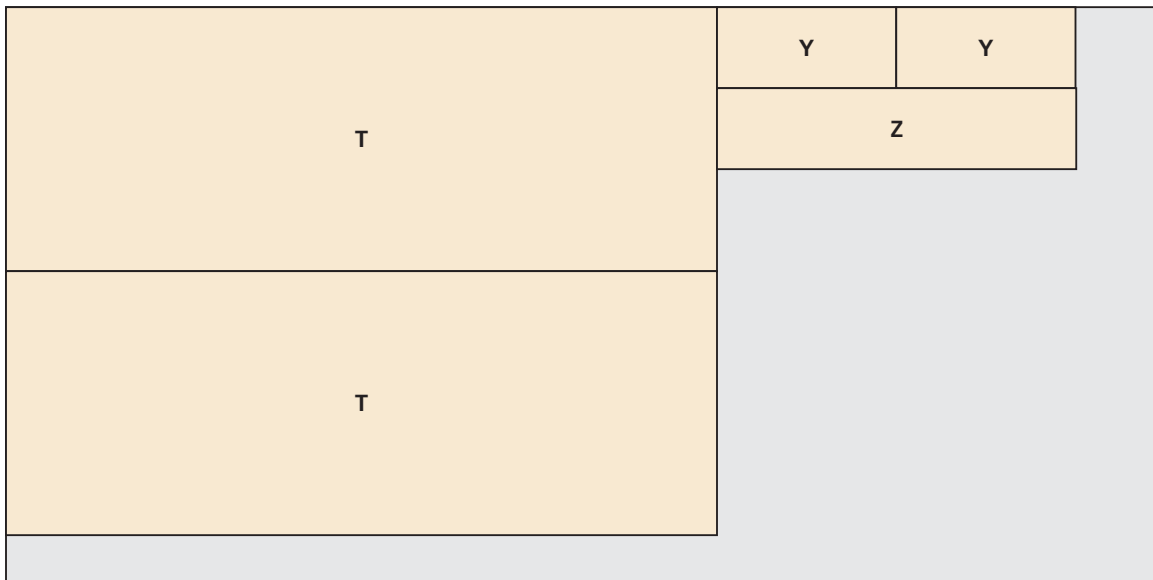
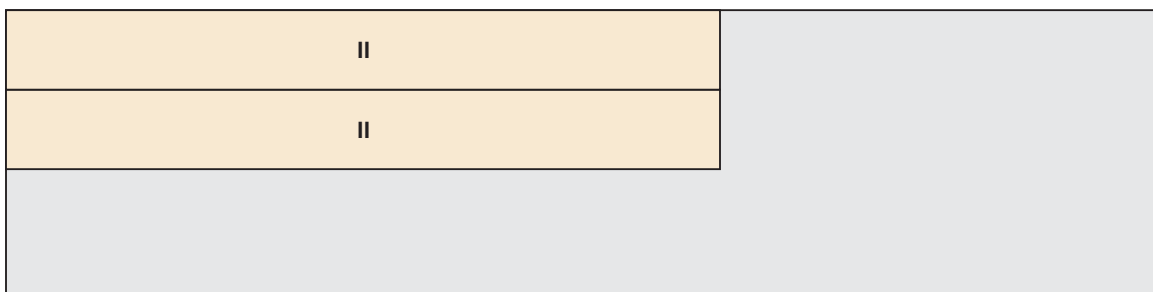
CUTTING DIAGRAM



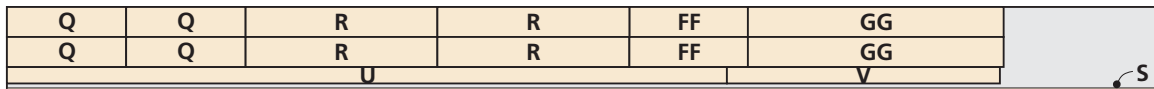
$\frac{3}{4}$ x 48 x 96 RIFT SAWN RED OAK PLYWOOD



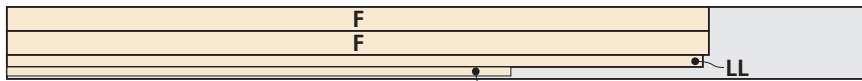
$\frac{3}{4}$ x 48 x 96 RIFT SAWN RED OAK PLYWOOD

CUTTING DIAGRAM**1/4 x 48 x 96 RIFT SAWN RED OAK PLYWOOD****3/4 x 49 x 97 MDF****1/4 x 24 x 96 TEMPERED HARDBOARD**

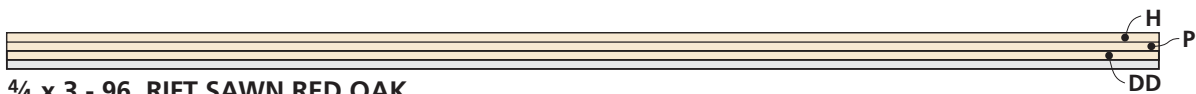
CUTTING DIAGRAM



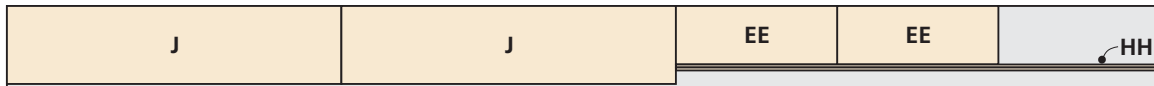
3/4 x 7 - 96 POPLAR



3/4 x 6 - 72 RIFT SAWN RED OAK



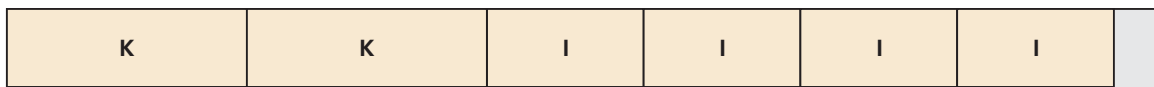
3/4 x 3 - 96 RIFT SAWN RED OAK



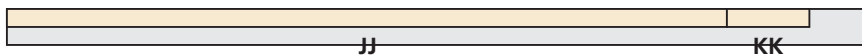
1/2 x 7 - 96 POPLAR



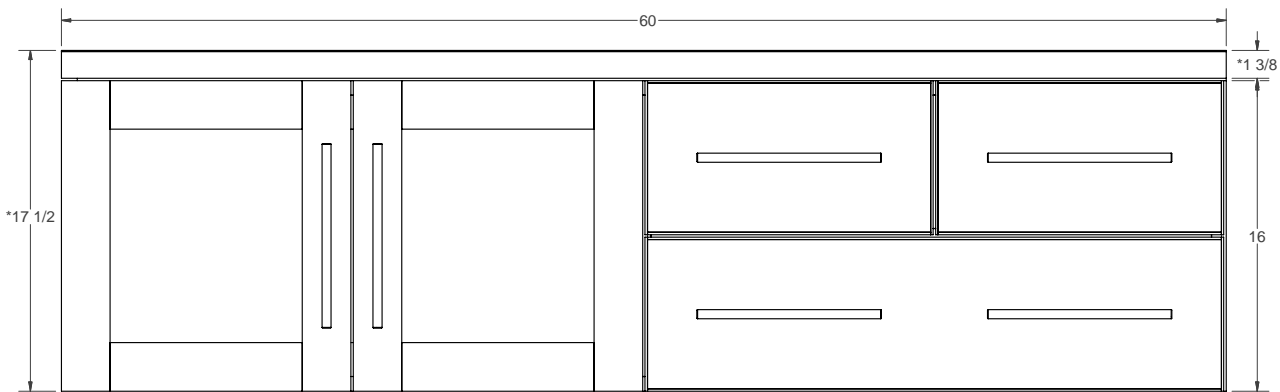
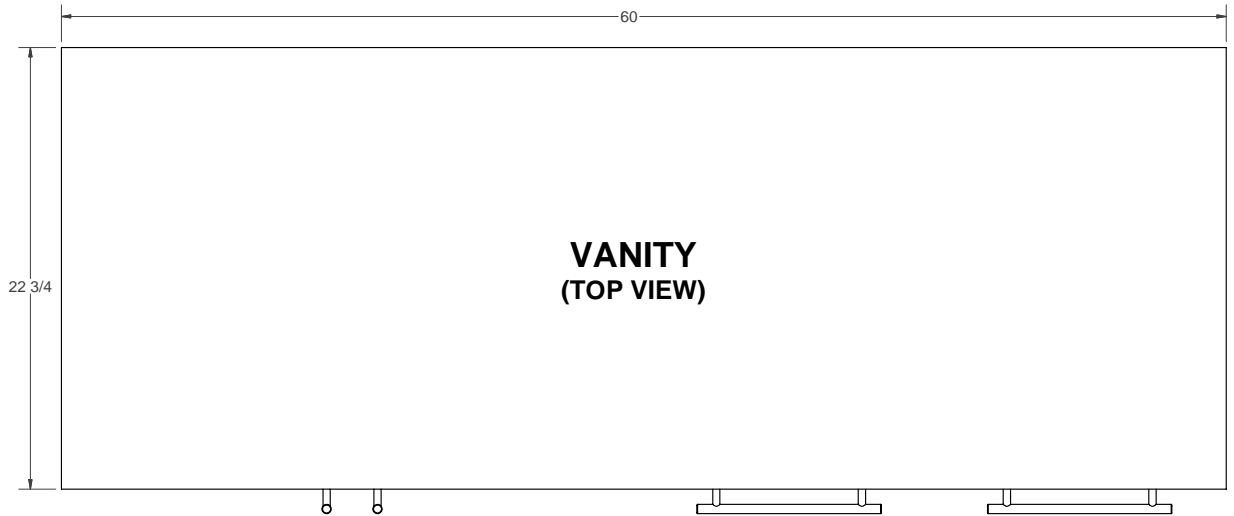
1/2 x 7 - 96 POPLAR



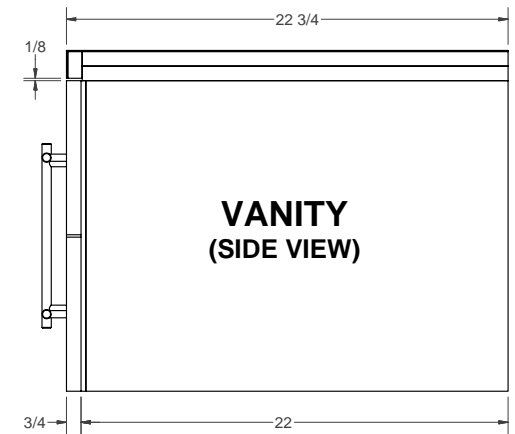
1/2 x 7 - 96 POPLAR



5/4 x 3 - 72 POPLAR

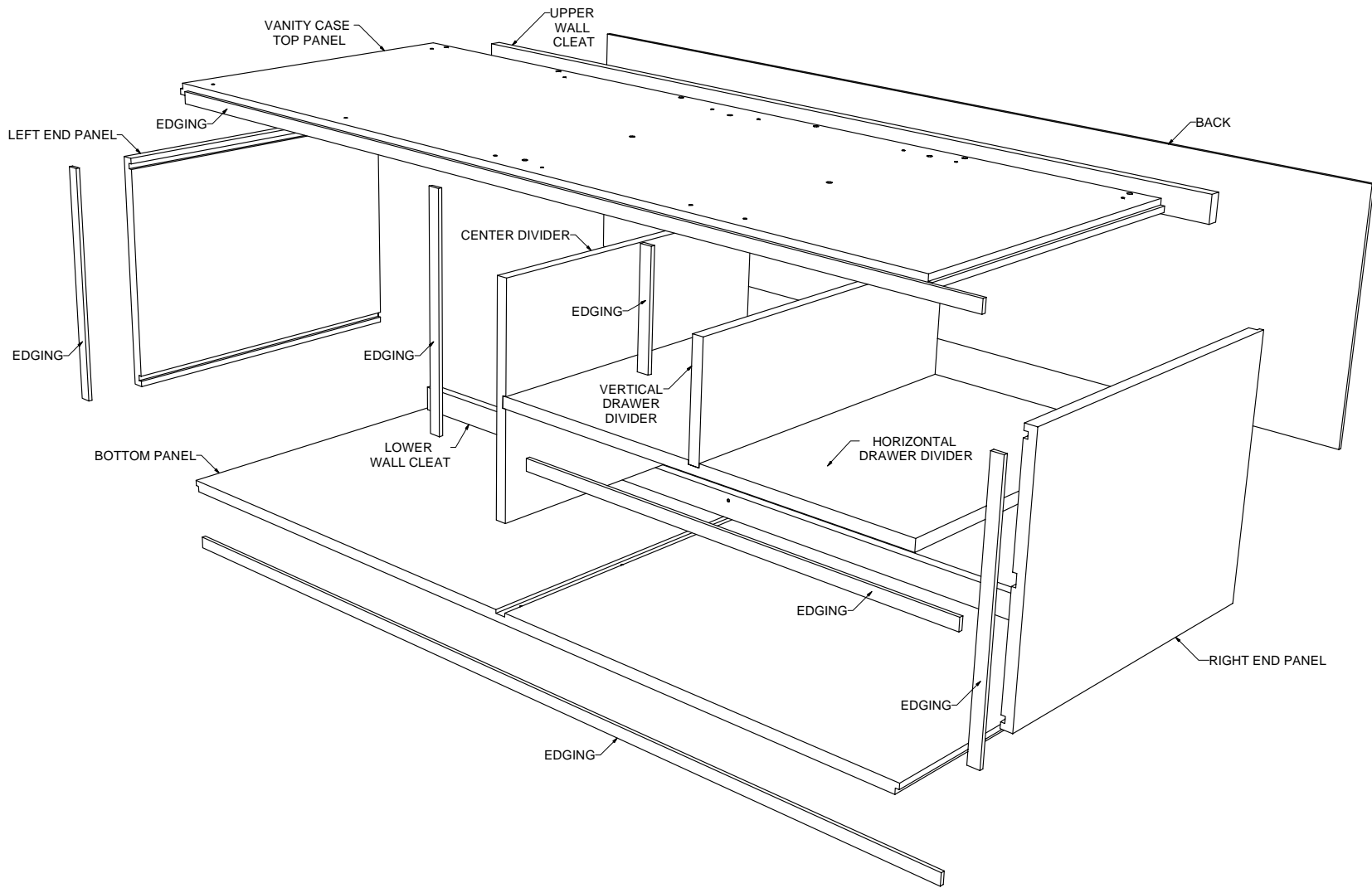


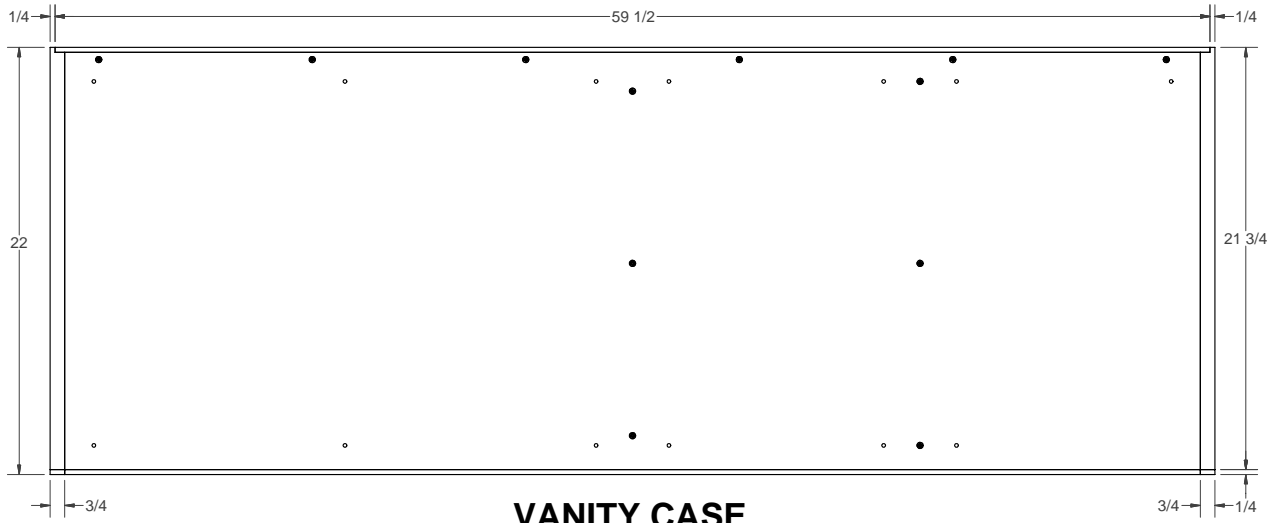
**VANITY
(FRONT VIEW)**



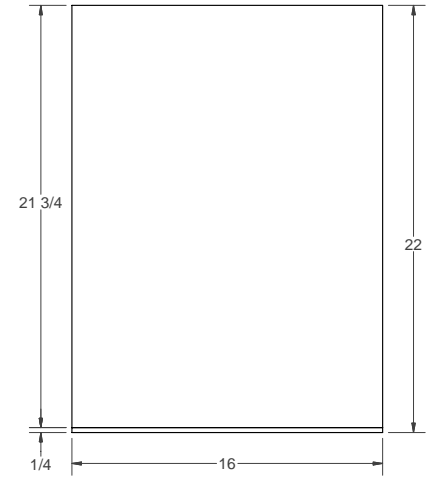
* TWO LAYERS OF MDF AND ONE LAYER OF PLASTIC LAMINATE

WORKBENCH #298	BATHROOM REMODEL	VANITY	DATE:	SHEET:
				1/14

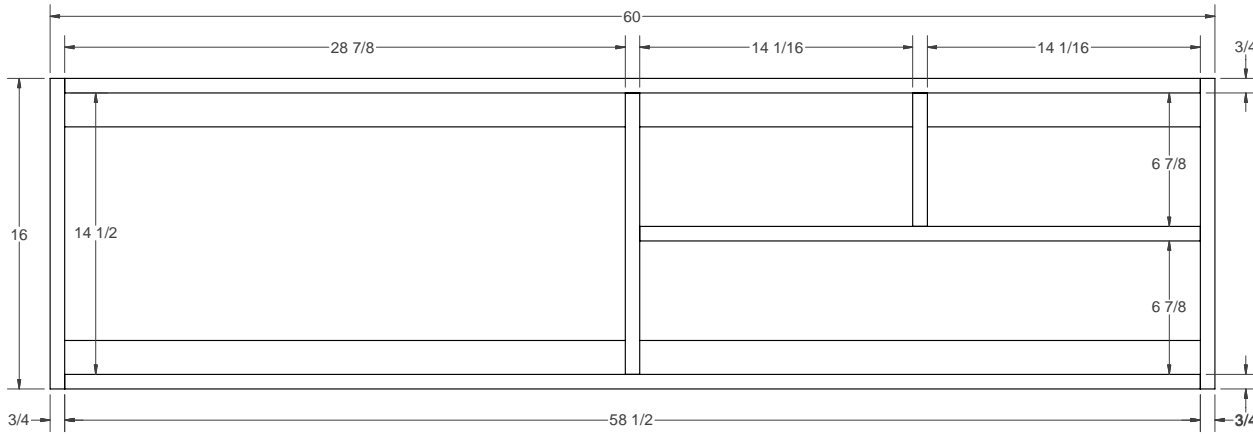




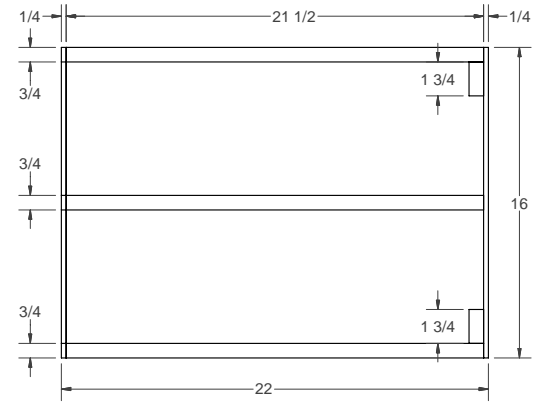
VANITY CASE
(TOP VIEW)



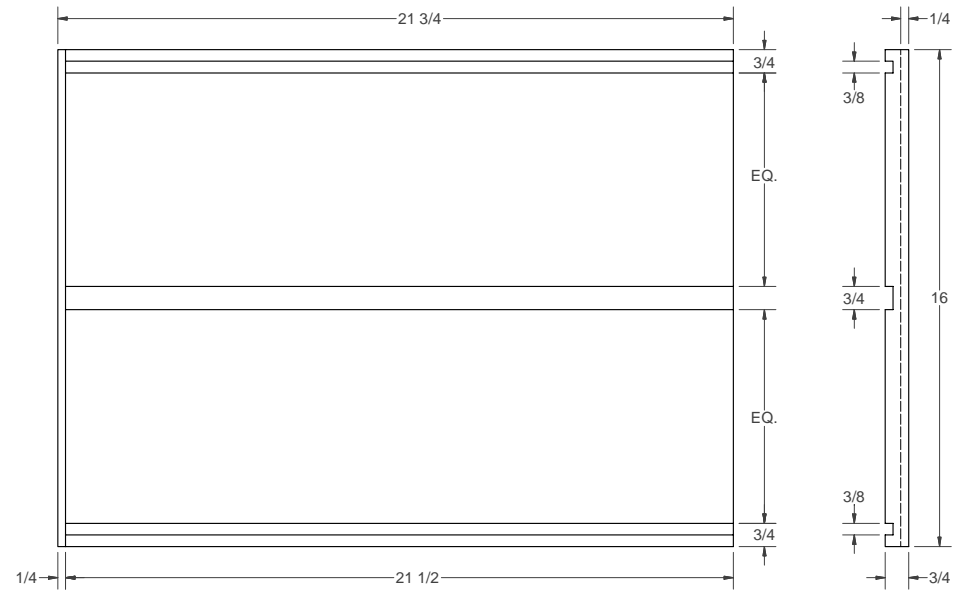
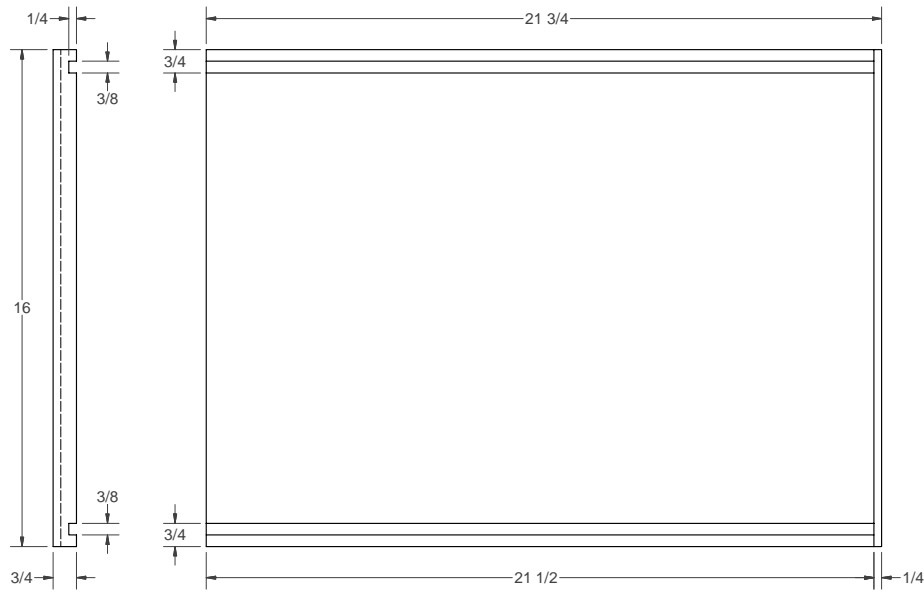
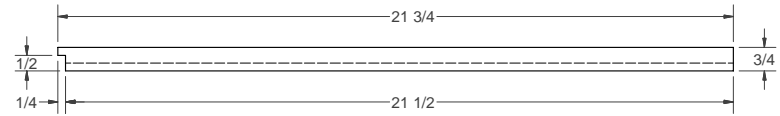
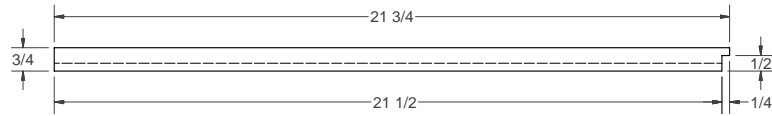
VANITY CASE
(SIDE VIEW)



VANITY CASE
(FRONT VIEW)

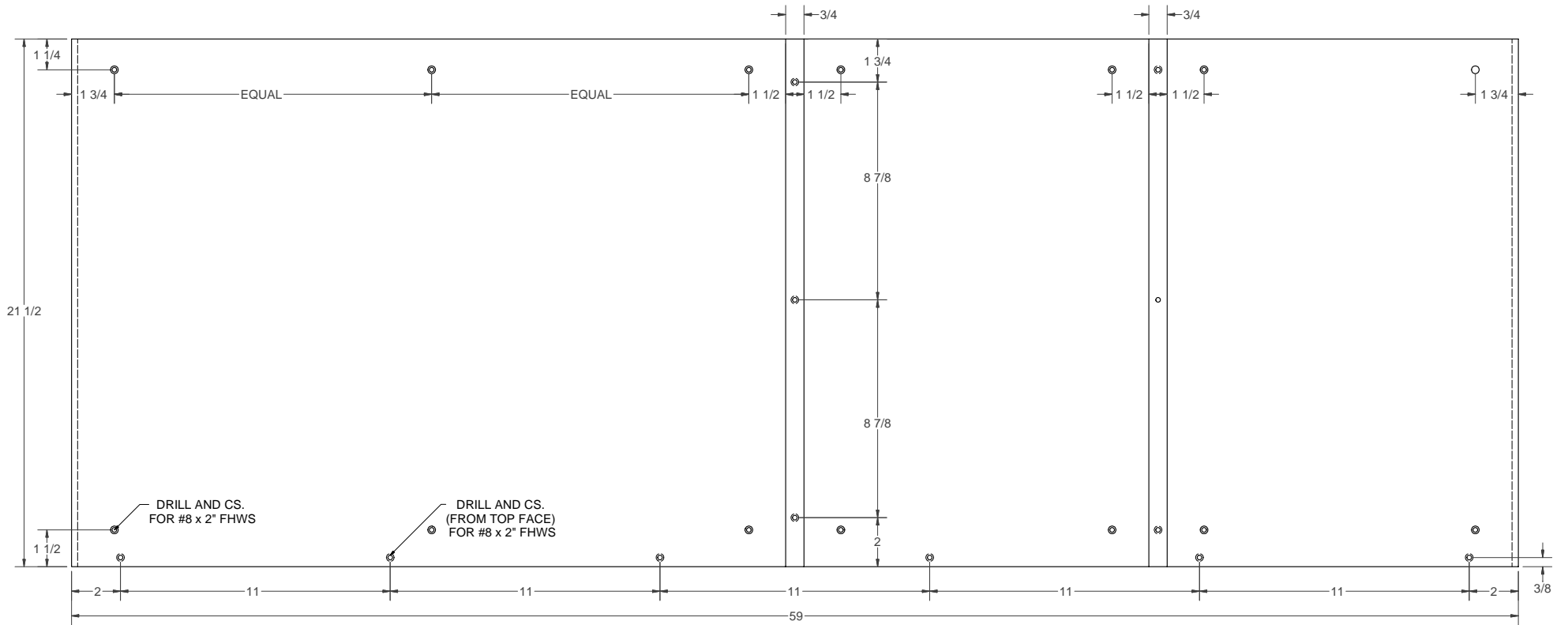
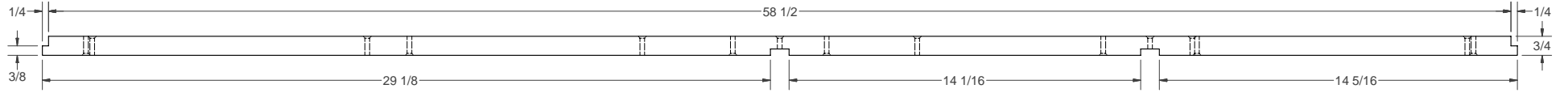


VANITY CASE
(SECTION VIEW)



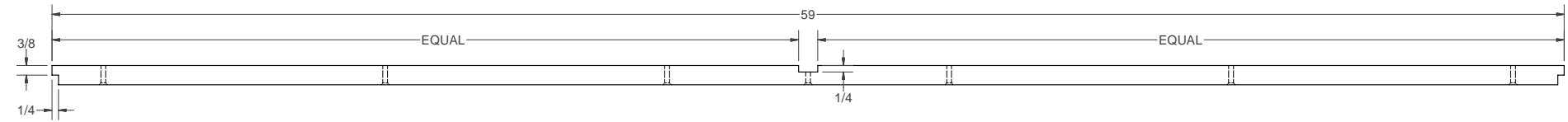
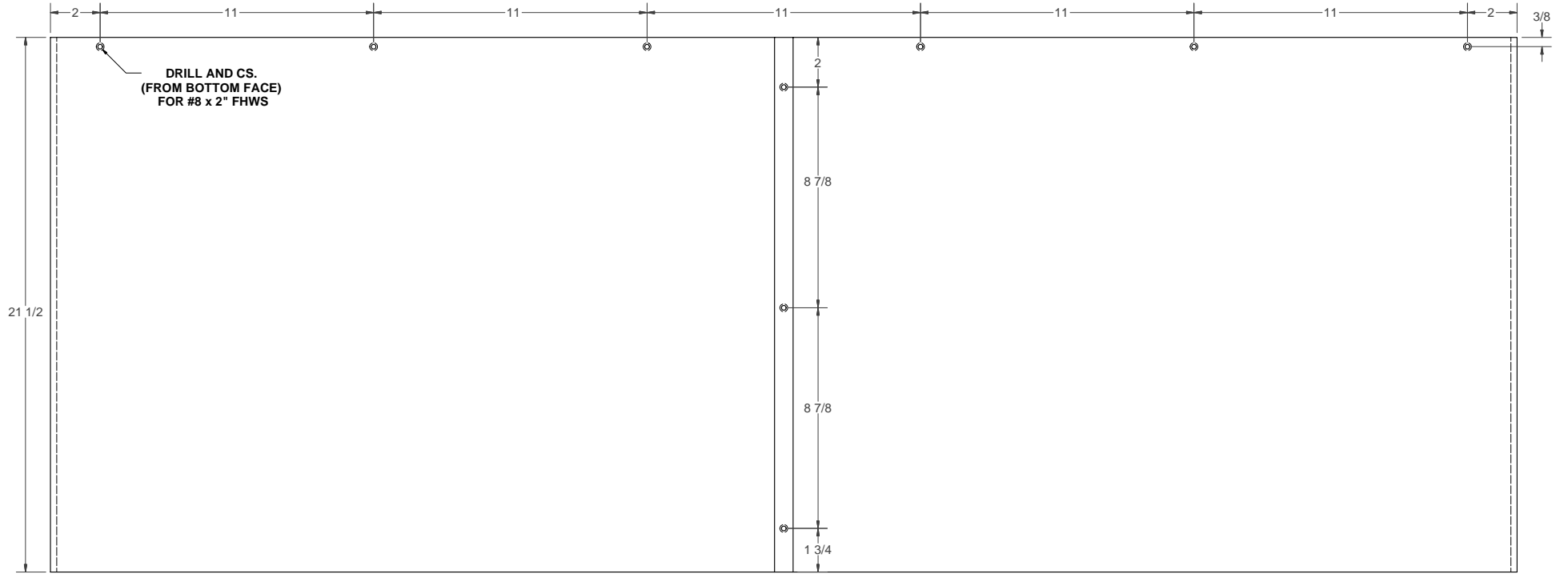
**VANITY CASE
LEFT END PANEL**

**VANITY CASE
RIGHT END PANEL**



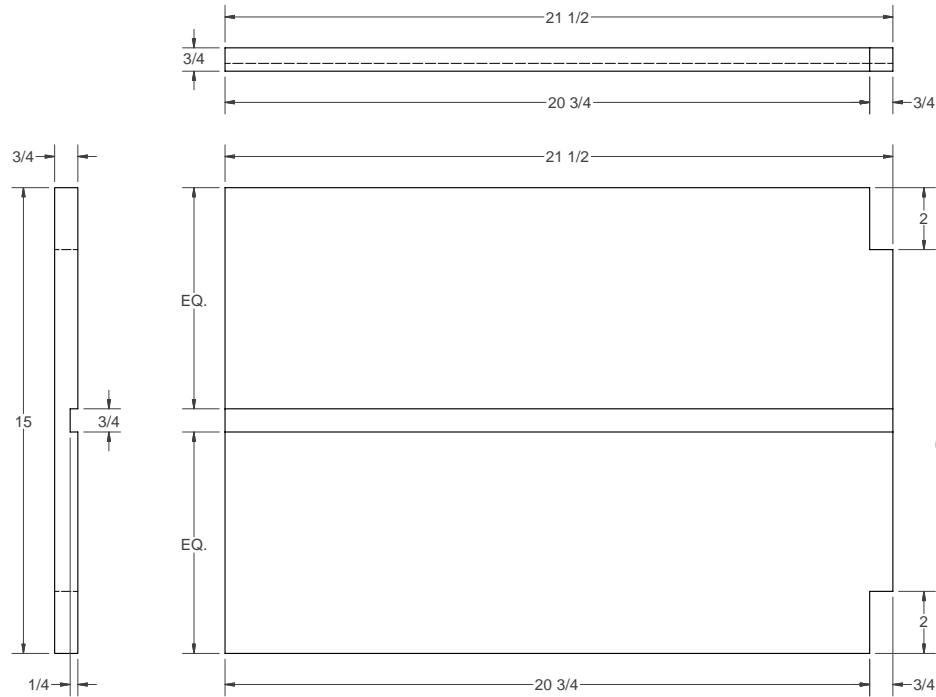
VANITY CASE TOP PANEL

WORKBENCH #298	BATHROOM REMODEL	VANITY	DATE	DRAWN
				5/14

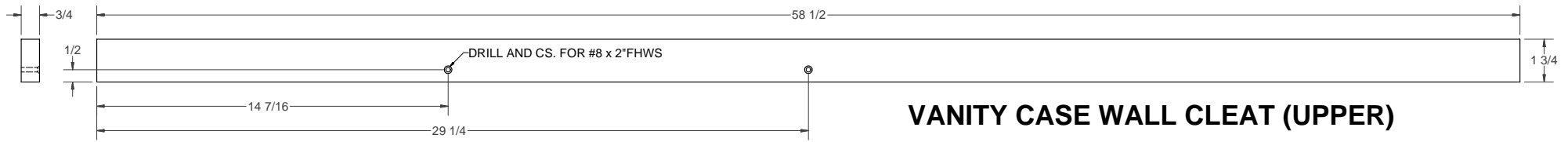


VANITY CASE BOTTOM PANEL

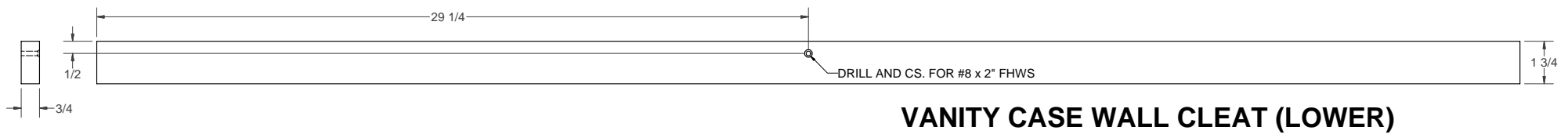
WORKBENCH #298	BATHROOM REMODEL	VANITY	DATE:	DRAWN BY:
				6/14



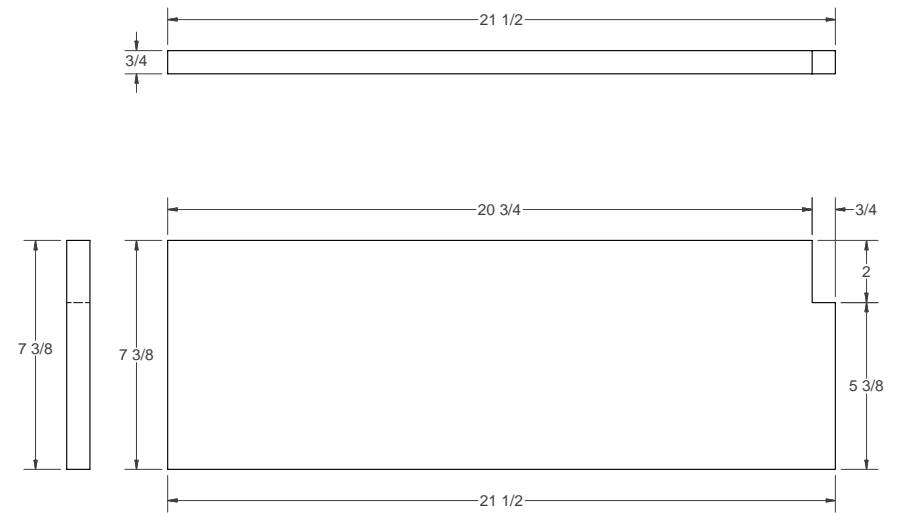
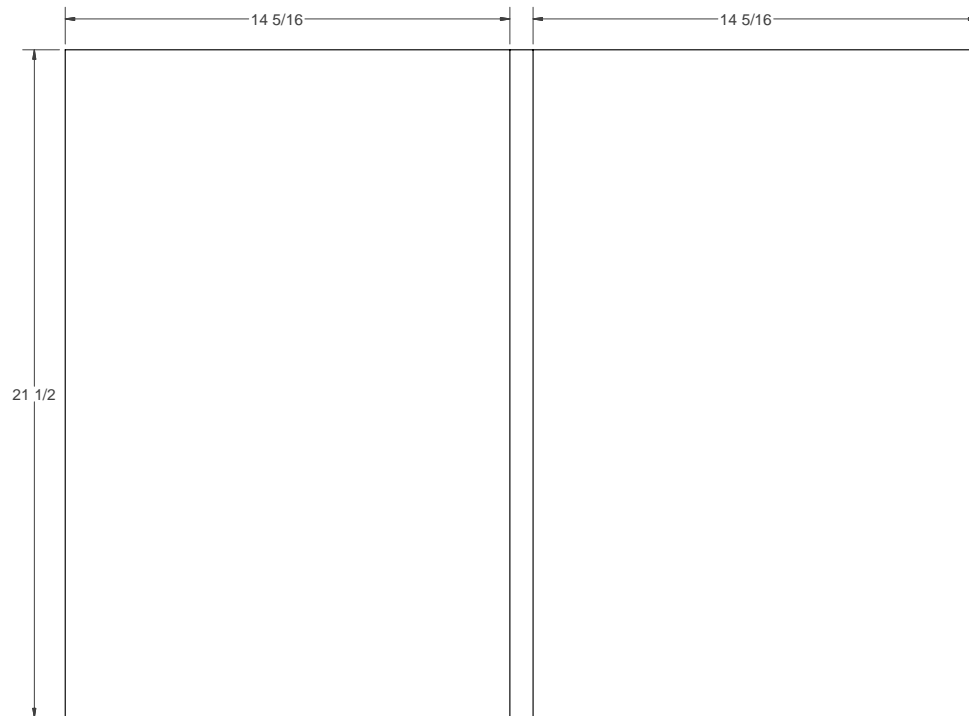
**VANITY CASE
CENTER DIVIDER**



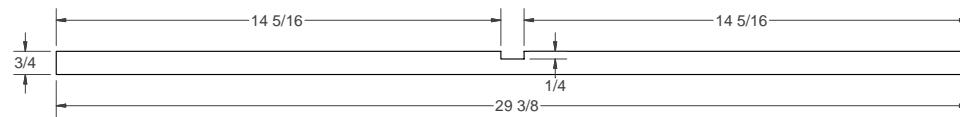
VANITY CASE WALL CLEAT (UPPER)



VANITY CASE WALL CLEAT (LOWER)



VANITY CASE
VERT. DRAWER DIVIDER PANEL



VANITY CASE
HORIZ. DRAWER DIVIDER PANEL

1/4

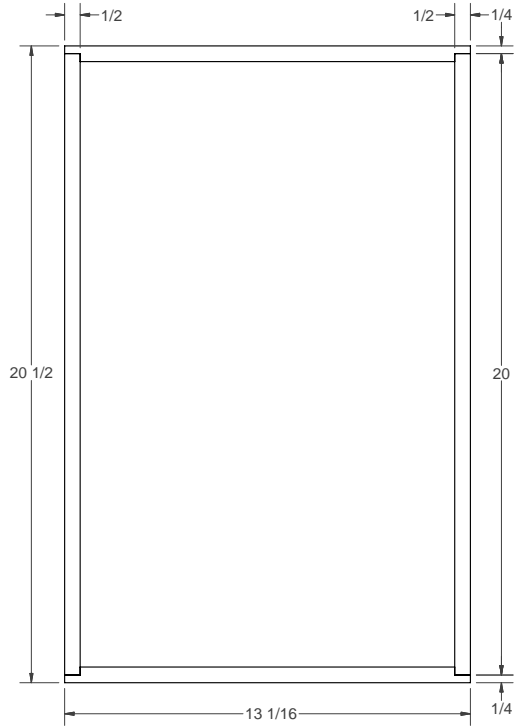
16

59 1/2

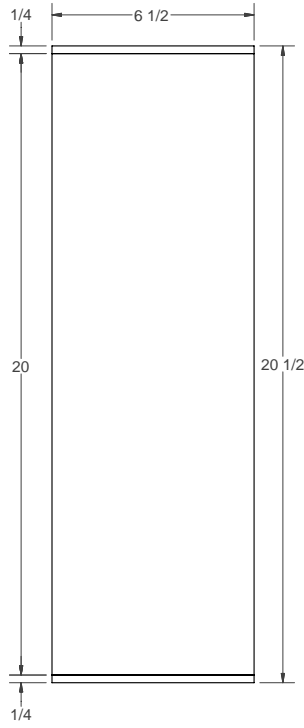
← GRAIN DIRECTION →

VANITY BACK PANEL

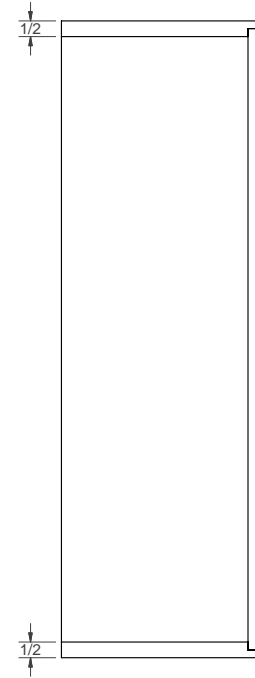
WORKBENCH #298	BATHROOM REMODEL	VANITY	DATE:	SHEET
				9/14



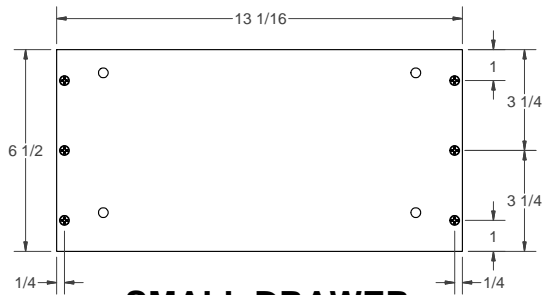
SMALL DRAWER
(TOP VIEW)



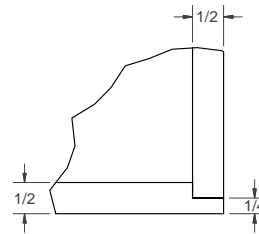
SMALL DRAWER
(SIDE VIEW)



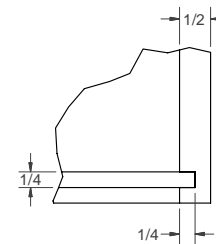
SMALL DRAWER
(SECTION VIEW)



SMALL DRAWER
(FRONT VIEW)



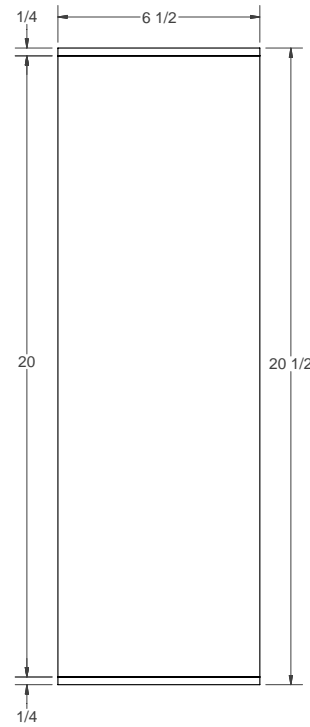
JOINERY DETAIL



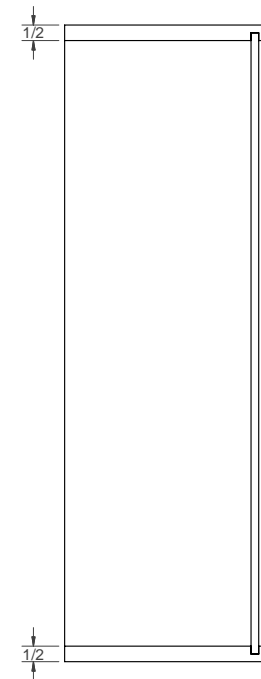
DRAWER BOTTOM
DETAIL



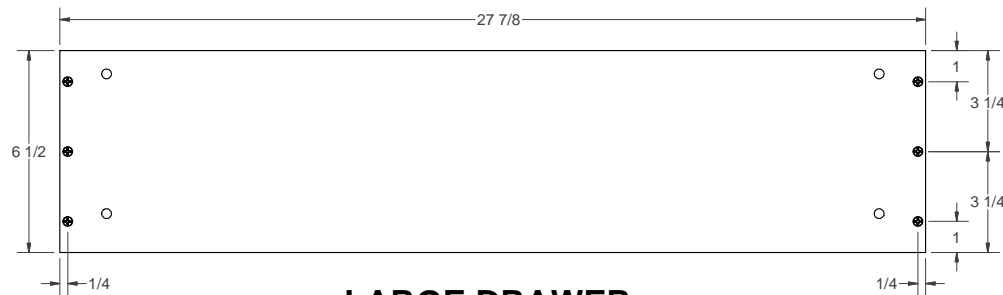
LARGE DRAWER
(TOP VIEW)



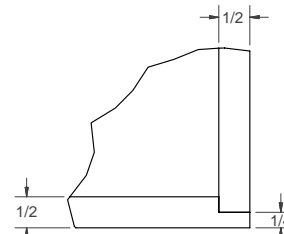
LARGE DRAWER
(SIDE VIEW)



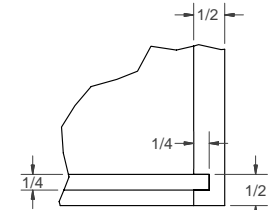
LARGE DRAWER
(SECTION VIEW)



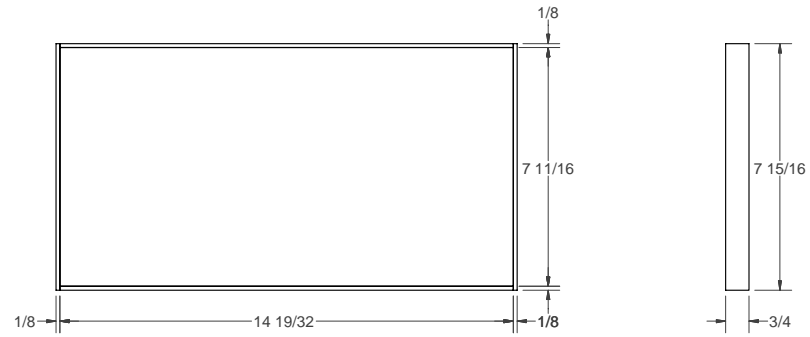
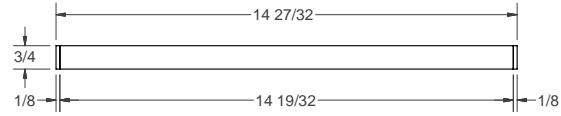
LARGE DRAWER
(FRONT VIEW)



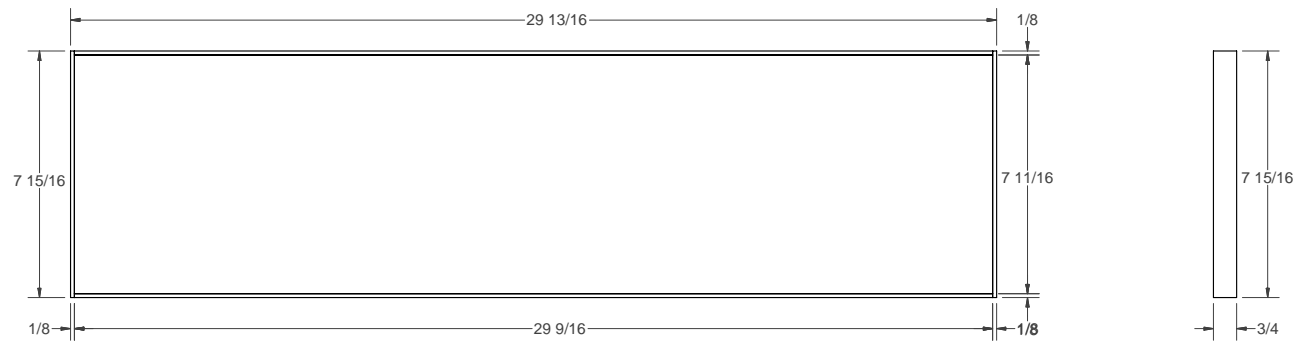
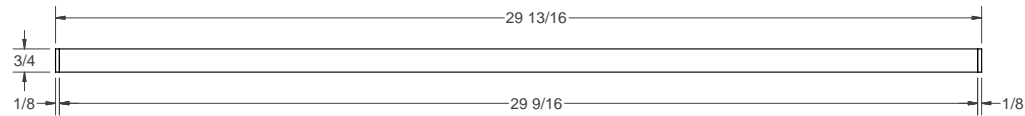
JOINERY DETAIL



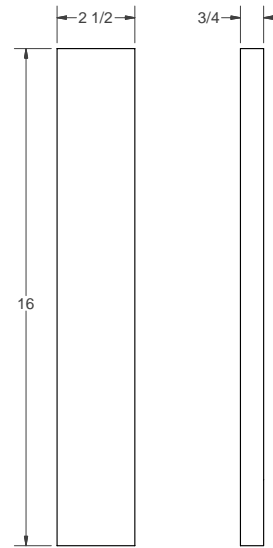
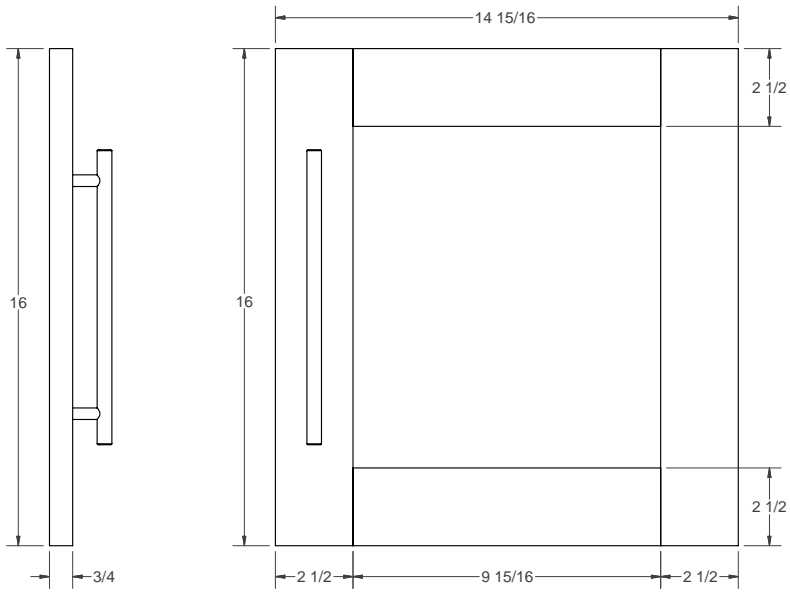
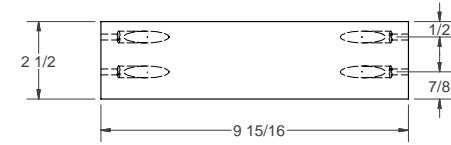
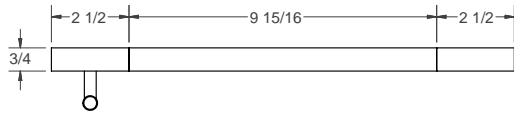
BOTTOM DETAIL



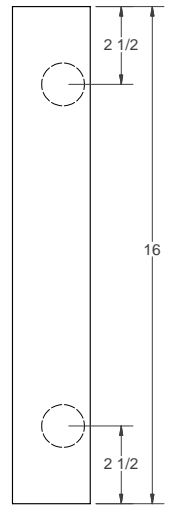
SMALL DRAWER FALSE FRONT



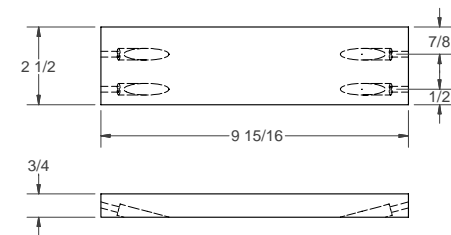
LARGE DRAWER FALSE FRONT

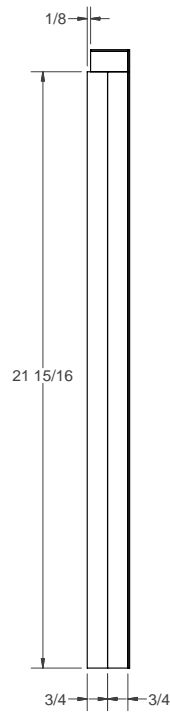
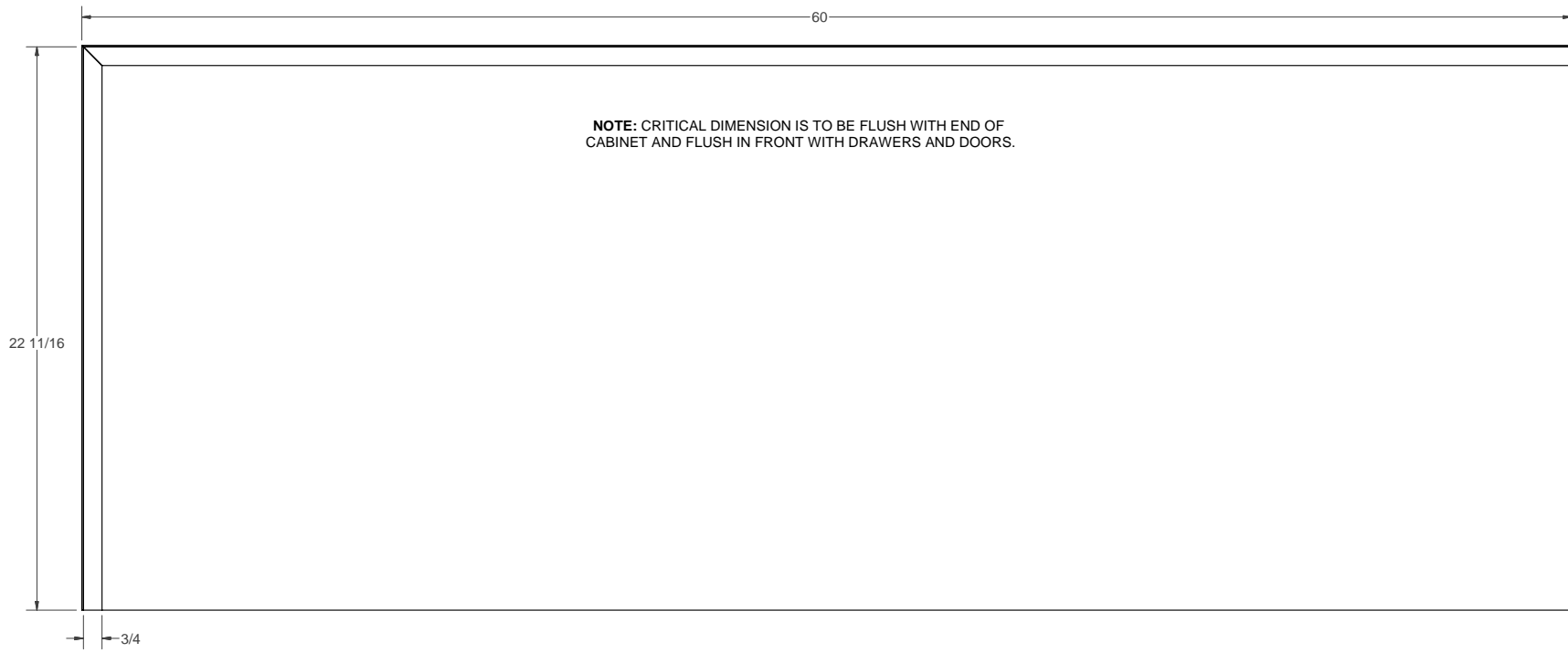
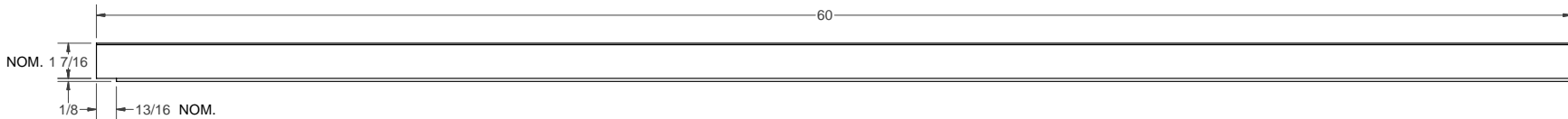


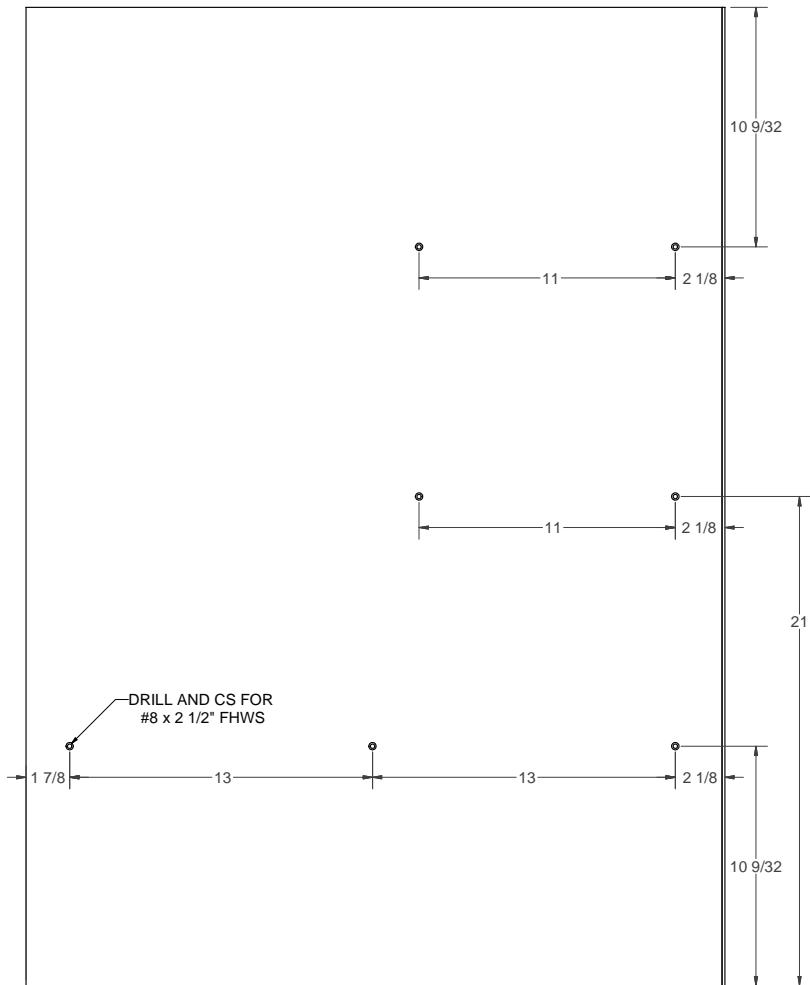
**VANITY DOOR
(RAILS-STILES)**



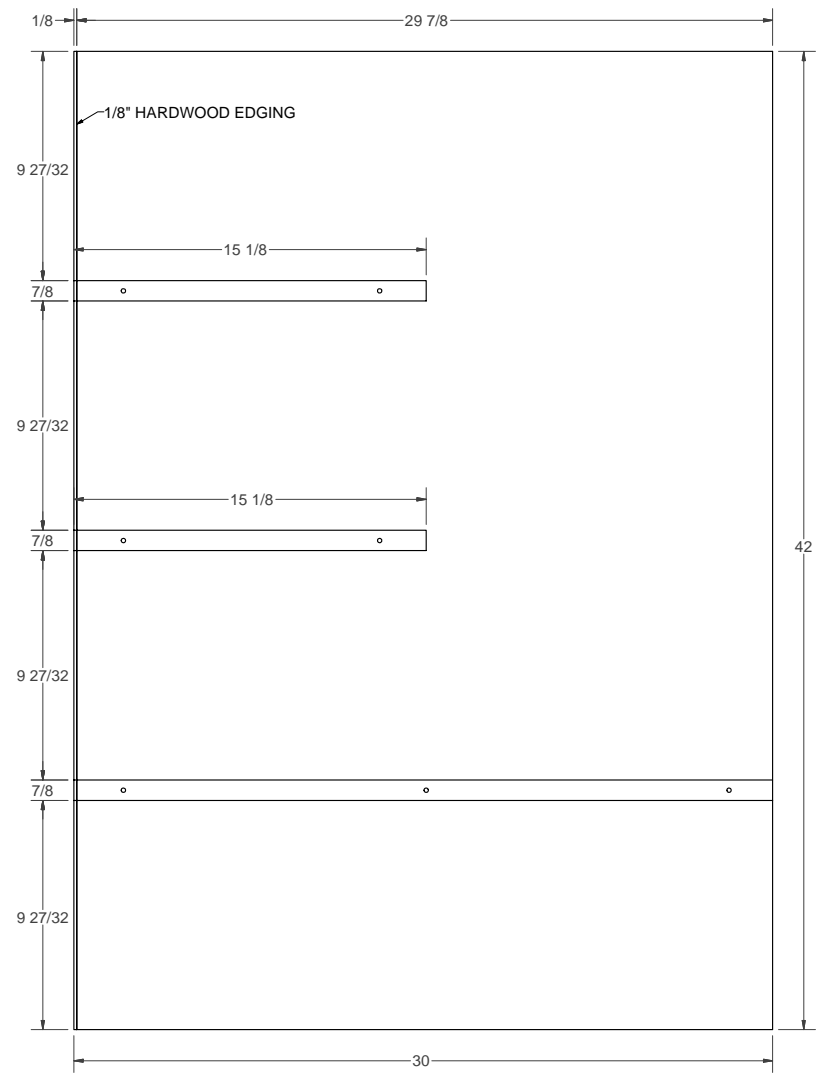
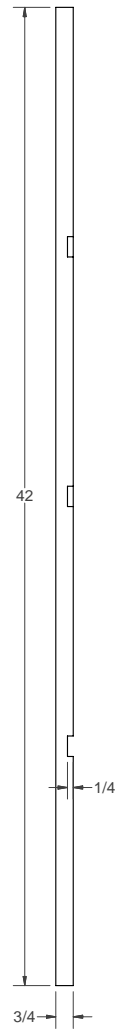
VANITY DOOR



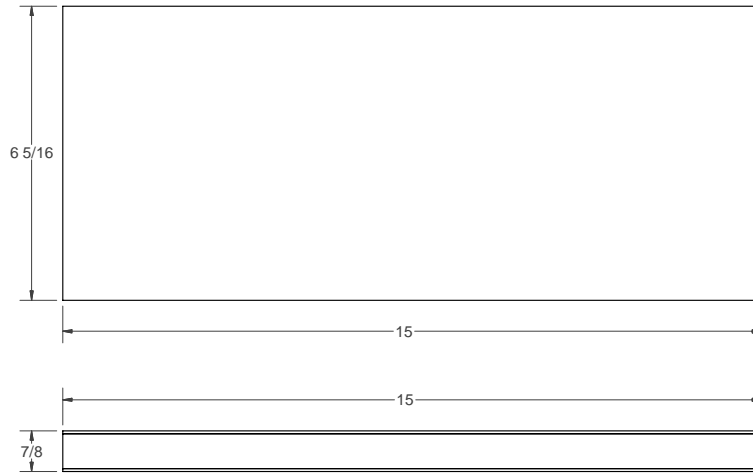




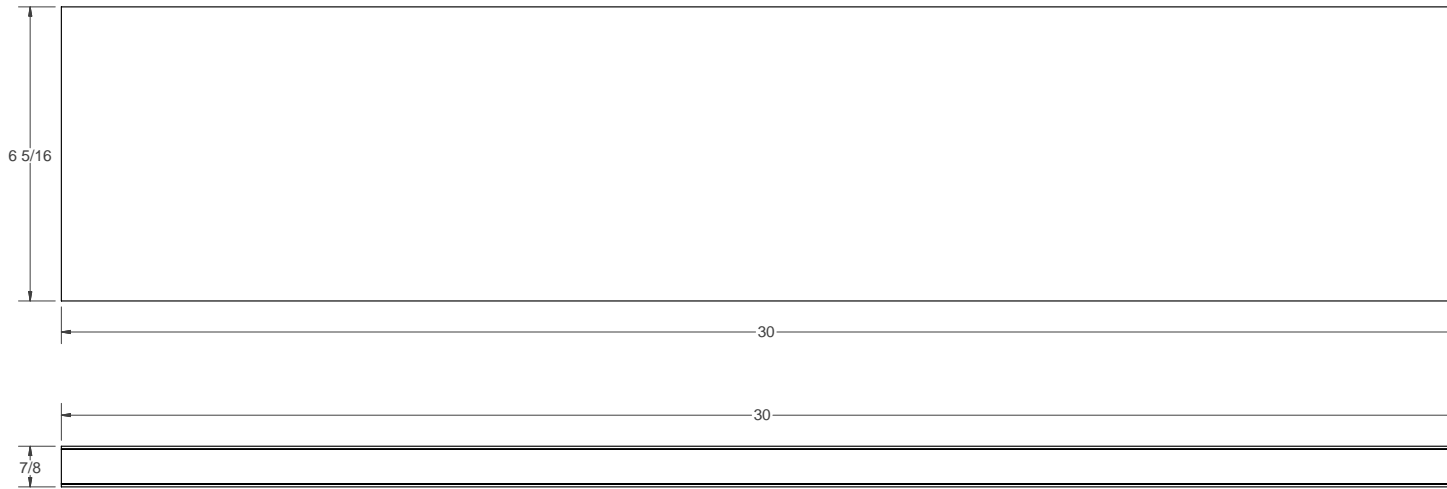
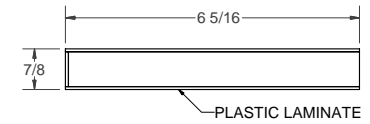
**PANEL
(BACK FACE)**



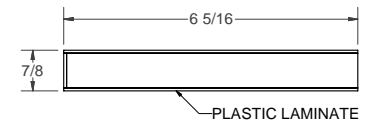
**PANEL
(FRONT FACE)**



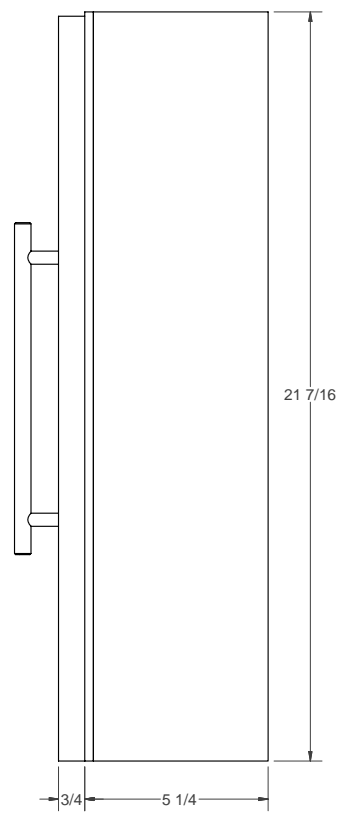
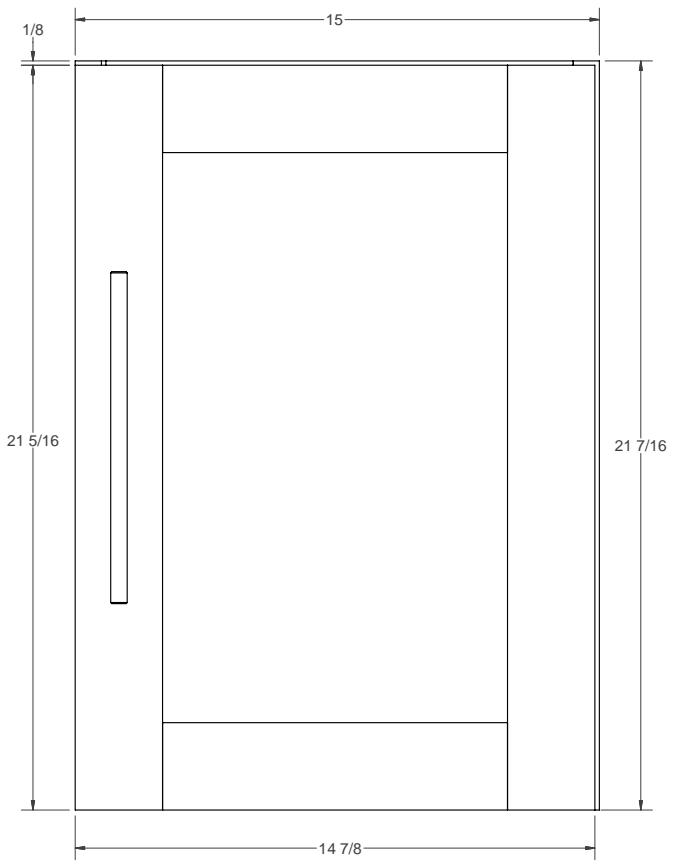
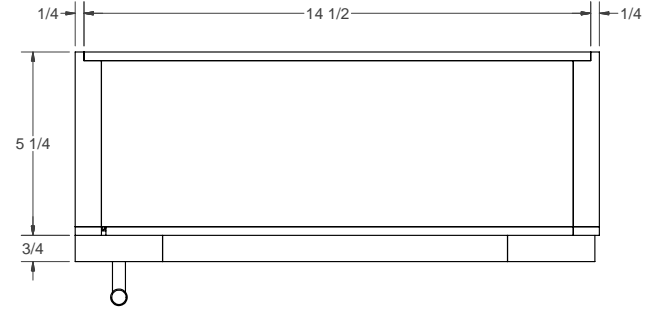
**WALL SHELF
(SHORT)**



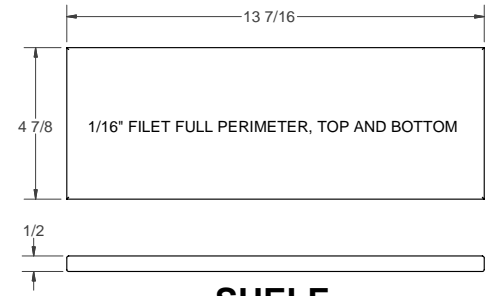
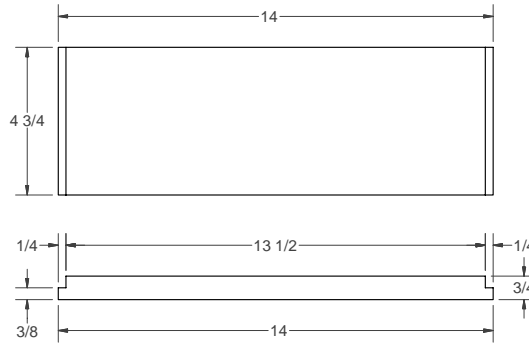
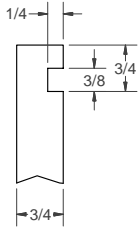
**WALL SHELF
(LONG)**



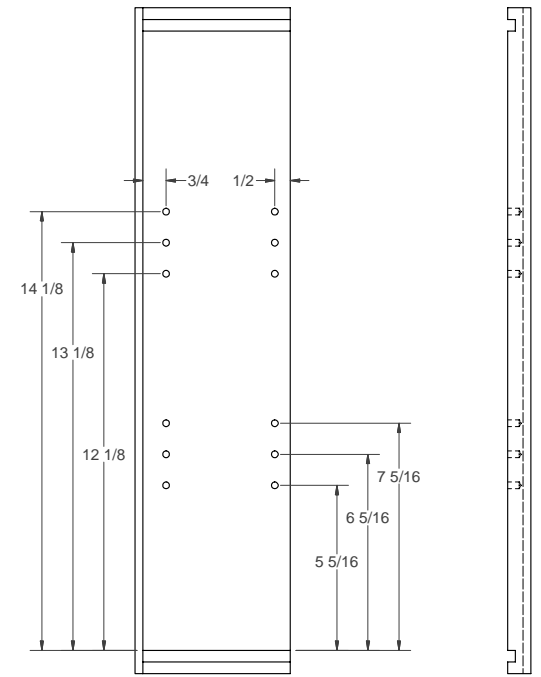
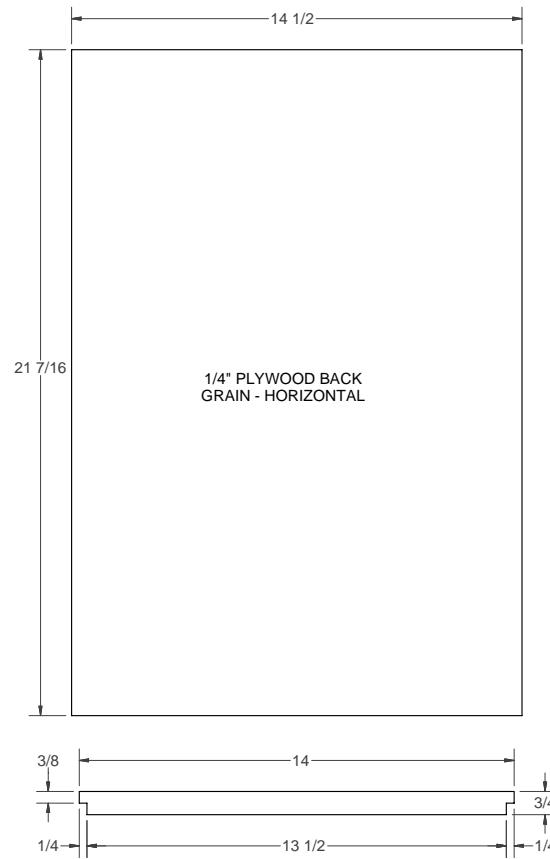
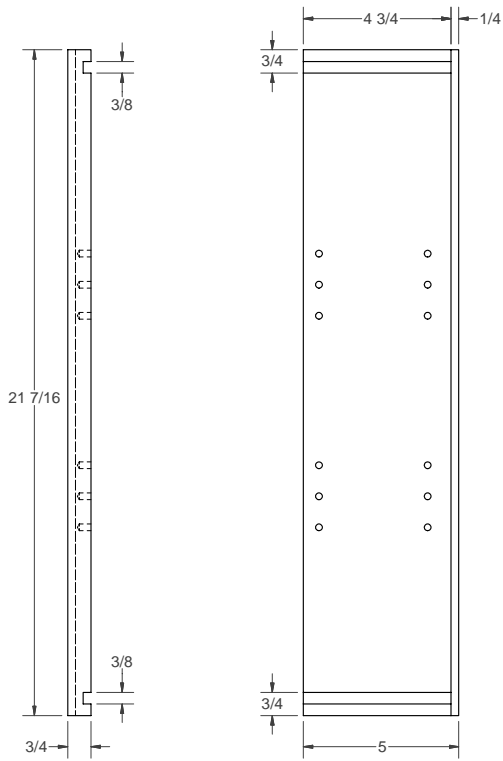
NOTE: SHELVES ARE 3/4 MDF COVERED WITH PLASTIC LAMINATE



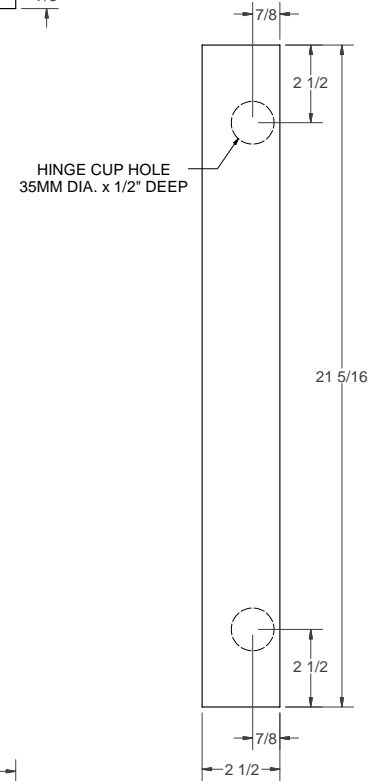
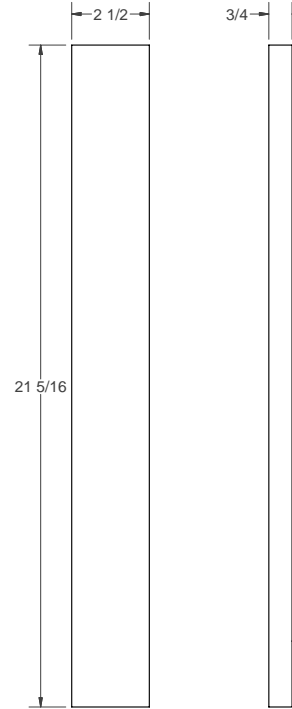
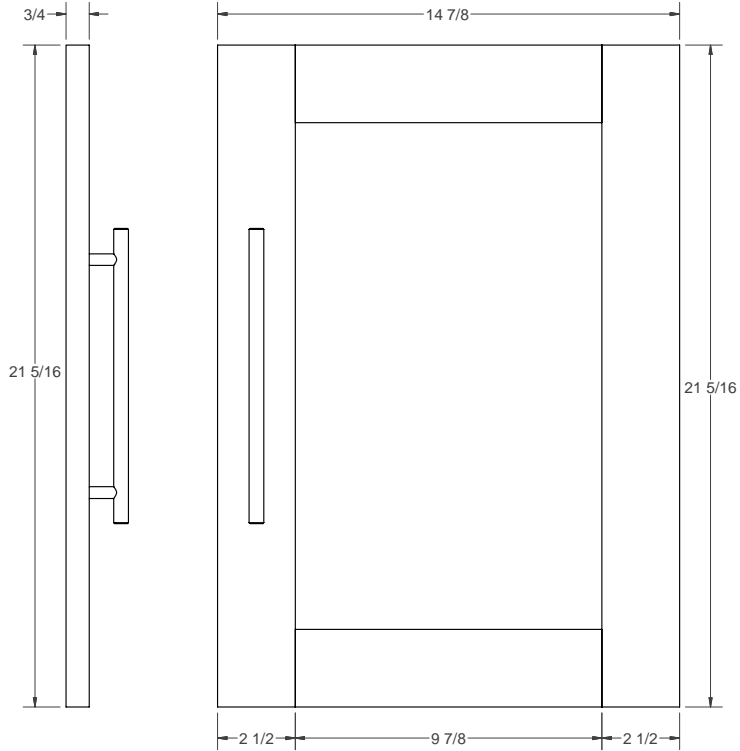
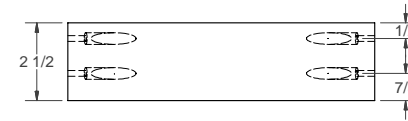
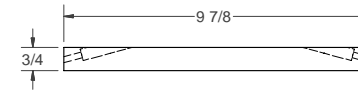
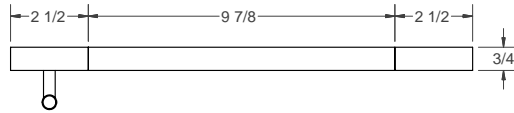
WORKBENCH #298	BATHROOM REMODEL	WALL SYSTEM	DATE 5-30-06	SHEET 3/6
----------------	------------------	-------------	--------------	-----------



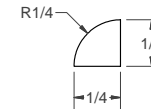
SHELF



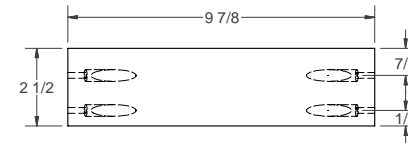
NOTE: ALL CASE EDGING IS 1/4 x 3/4



HINGE CUP HOLE
35MM DIA. x 1/2" DEEP

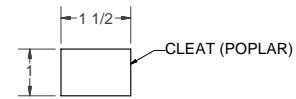
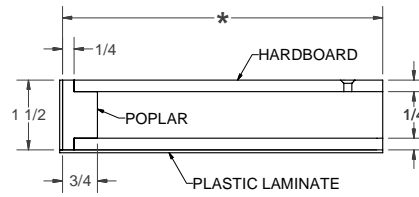
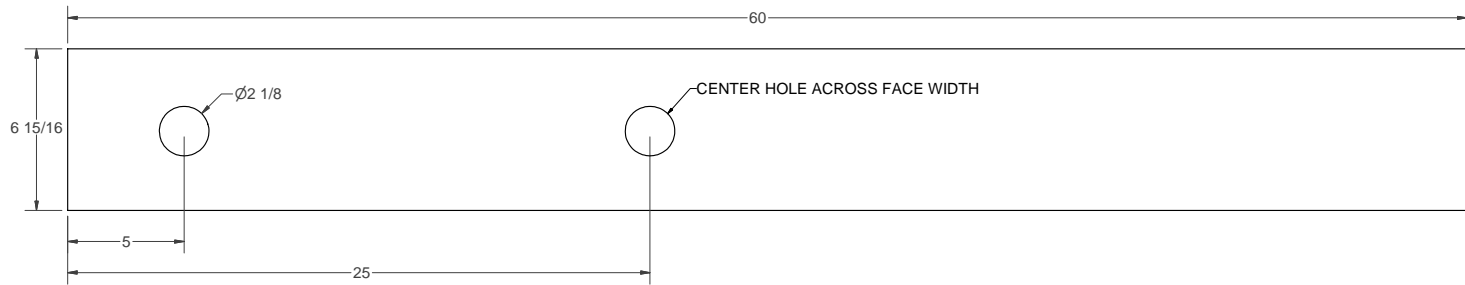
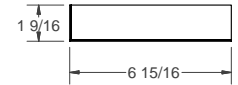
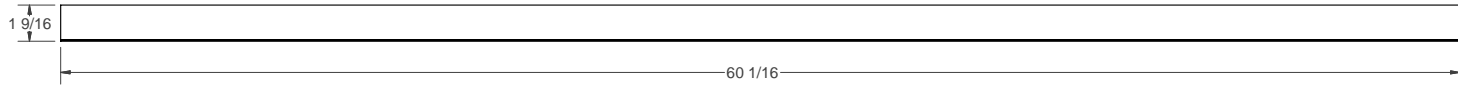
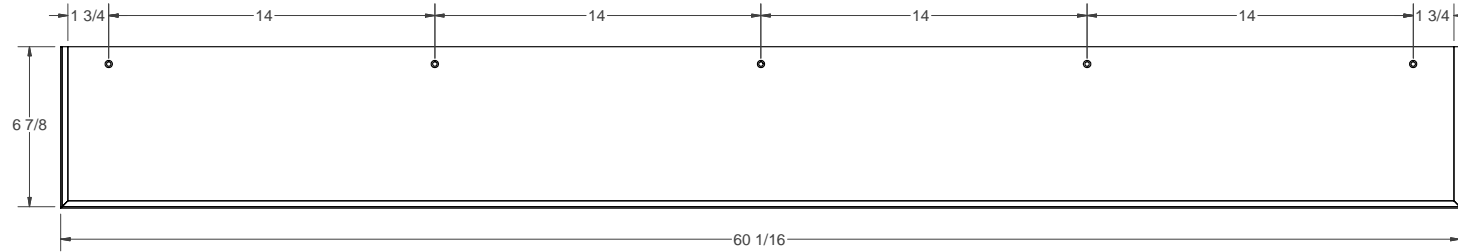


GLASS STOP



DOOR COMPONENTS

MEDICINE CABINET DOOR



* : APPROX. $6 \frac{7}{8}$ BUT CRITICAL TO BE FLUSH WITH FRONT OF MEDICINE CABINET