



# Thank You!

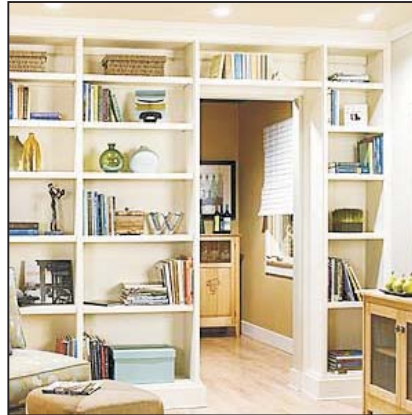
---

**You have successfully downloaded your document from Workbenchmagazine.com. Below are some tips for Trouble-Free Printing**

- 1)** Clear printer memory. If you are unable to print this document, turn off your printer for at least 15 seconds and try again.
  
- 2)** Print two or three pages at a time. If clearing the printer memory didn't help, try printing only two or three pages at one time, rather than sending the entire file
  
- 3)** If a document is required to be at an accurate scale set the page scaling option to "none" in your printer settings.
  
- 4)** Get advanced printer help. Visit Adobe Support for instructions in troubleshooting common printer problems.

<http://www.adobe.com/support/techdocs/316508.html>

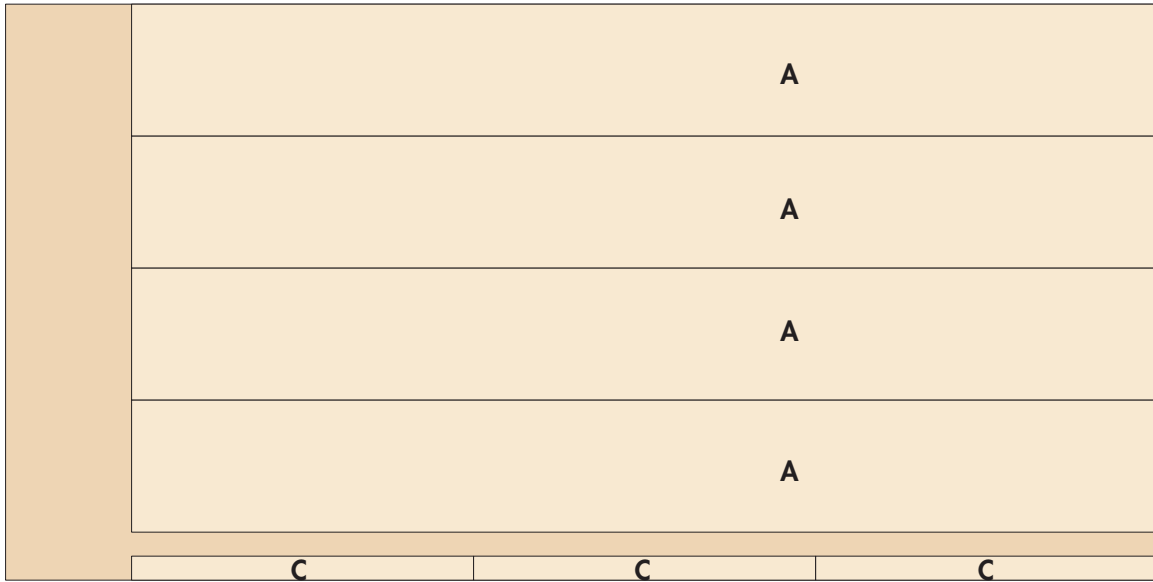
## MATERIALS LIST



### MATERIALS & HARDWARE

Part	Qty	T	W	L	Material	Part	Qty	T	W	L	Material		
<b>Wide Cases</b>						<b>Q</b>	Surround Shelf	1	3/4"	10 1/4"	33 1/2"	MDF	
<b>A</b>	Case Sides	6	3/4"	11"	85 1/2"	MDF	<b>R</b>	Shelf Edging	2	3/4"	1 1/2"	33 1/2"	Poplar
<b>B</b>	Case Tops & Bottoms	6	3/4"	11"	30"	MDF	<b>Base Units</b>						
<b>C</b>	Mounting Cleats	3	3/4"	2"	28 1/2"	MDF	<b>S</b>	Wide Base Front/Back	2	3/4"	5 1/2"	90 3/4"	MDF
<b>D</b>	Back Panels	3	1/4"	30"	87"	Birch Plywood	<b>T</b>	Narrow Base Front/Back	2	3/4"	5 1/2"	18 3/4"	MDF
<b>E</b>	Shelves	18	3/4"	10 1/4"	28 3/8"	MDF	<b>U</b>	Supports	6	3/4"	5 1/2"	9 3/4"	MDF
<b>F</b>	Shelf Edging	36	3/4"	1 1/2"	28 3/8"	Poplar	<b>Trim Pieces</b>						
<b>Narrow Case</b>						<b>V</b>	Sub-Base	1	3/4"	6"	12'	Poplar	
<b>G</b>	Case Sides	2	3/4"	11"	85 1/2"	MDF	<b>W</b>	Baseboard	1	5/8"	5"	12'	Poplar
<b>H</b>	Case Top & Bottom	2	3/4"	11"	18"	MDF	<b>X</b>	Top Trim	1	3/4"	1 1/2"	12'	Poplar
<b>I</b>	Mounting Cleat	1	3/4"	2"	16 1/2"	MDF	<b>Y</b>	Case Trim Strips	6	3/4"	1"	86"	Poplar
<b>J</b>	Back Panel	1	1/4"	18"	87"	Birch Plywood	<b>Z</b>	Door Trim Strips	2	1/2"	1 1/2"	75"	Poplar
<b>K</b>	Shelves	6	3/4"	10 1/4"	16 3/8"	MDF	(20) 5/8" Shelf Standards (72" long) * (1) 7mm x 50mm Confirmat Screw Kit ** (20) #8 x 1 1/4" Fh Woodscrews (30) #8 x 2 1/2" Fh Woodscrews (200) 1 1/2" Finish Nails						
<b>L</b>	Shelf Edging	12	3/4"	1 1/2"	16 3/8"	Poplar	*Item #22096 at <a href="http://www.Rockler.com">www.Rockler.com</a> ** Item #7050-CSP-A at <a href="http://www.McFeelys.com">www.McFeelys.com</a>						
<b>Door Surround</b>						<p><b>ONLINE Extras</b> Interactive Materials List Cutting Diagram <a href="http://WorkbenchMagazine.com">WorkbenchMagazine.com</a></p>							
<b>M</b>	Surround Sides	2	3/4"	11"	86 1/4"							MDF	
<b>N</b>	Surround Top	1	3/4"	11"	35"							MDF	
<b>O</b>	Surround Cleat	1	3/4"	2"	33 1/2"							MDF	
<b>P</b>	Back Panel	1	1/4"	11 1/4"	35"	Birch Plywood							

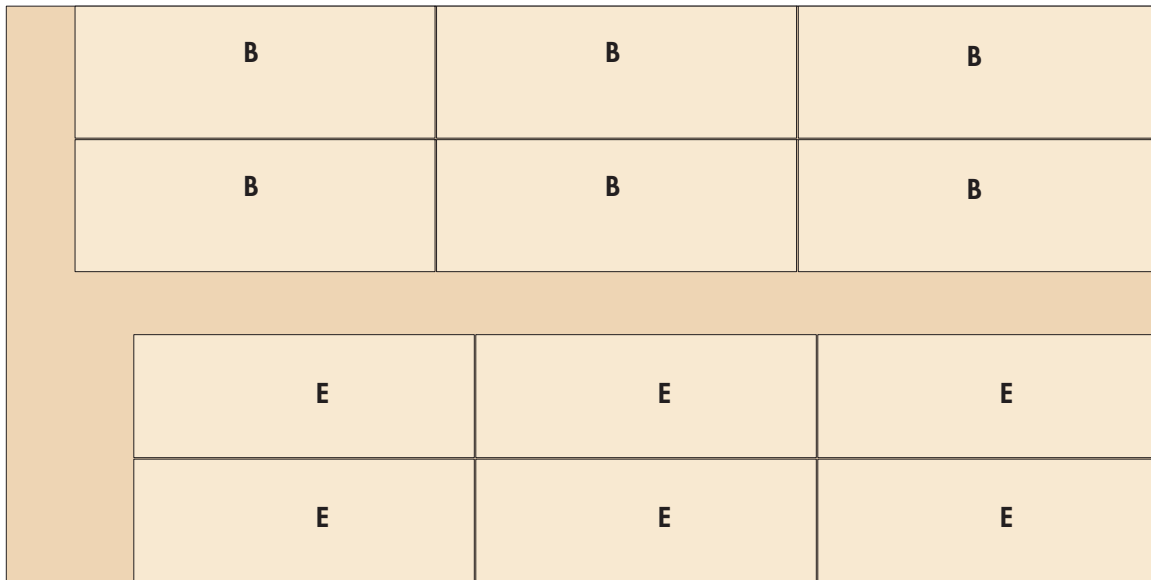
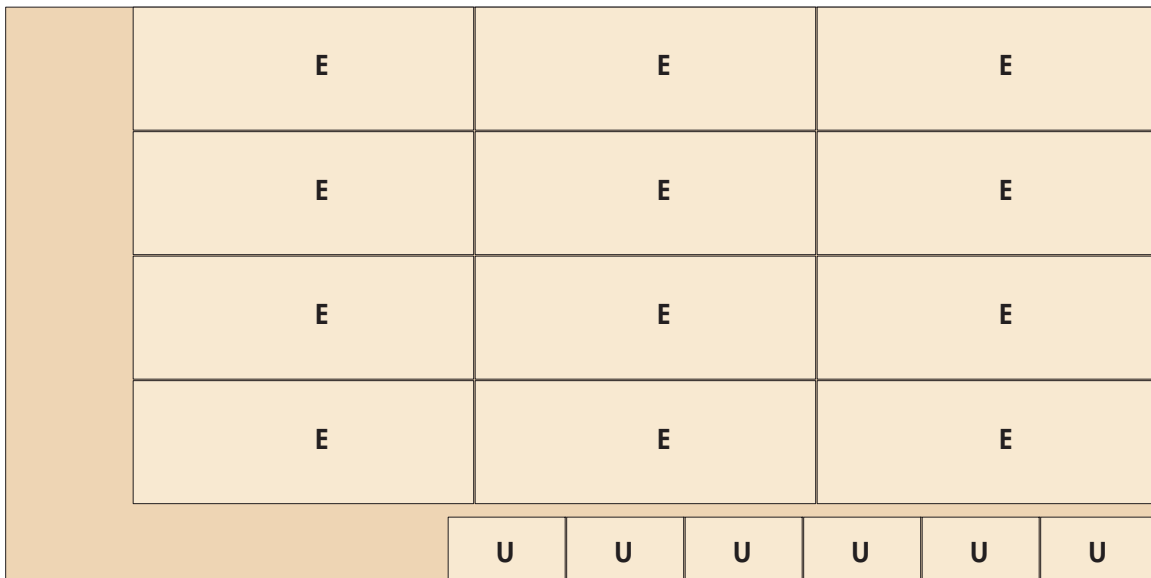
## CUTTING DIAGRAM

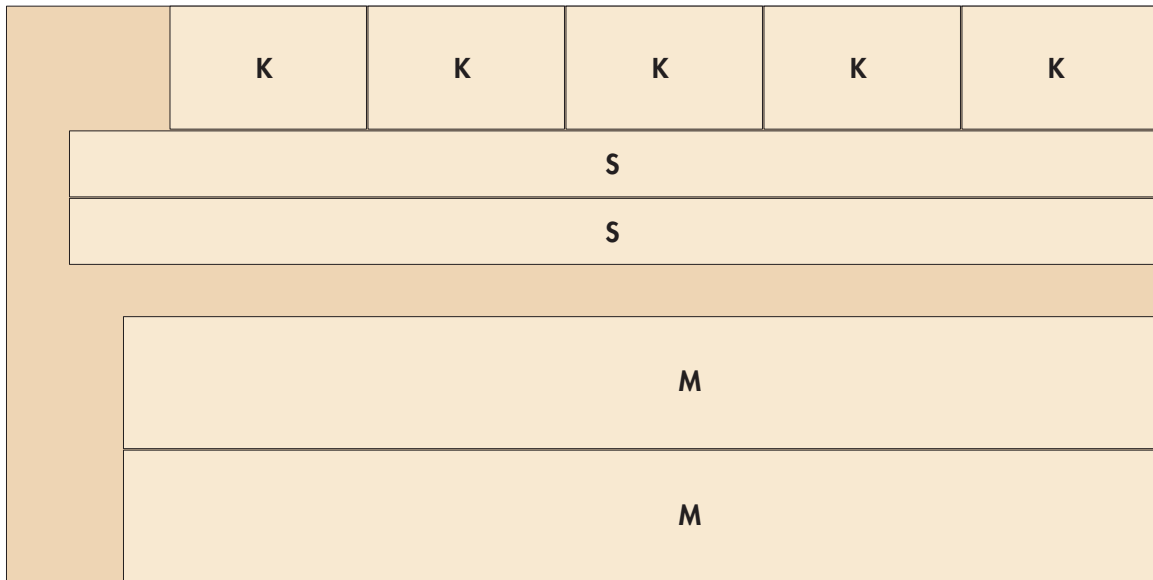


$\frac{3}{4}$ " x 49" x 97" MDF

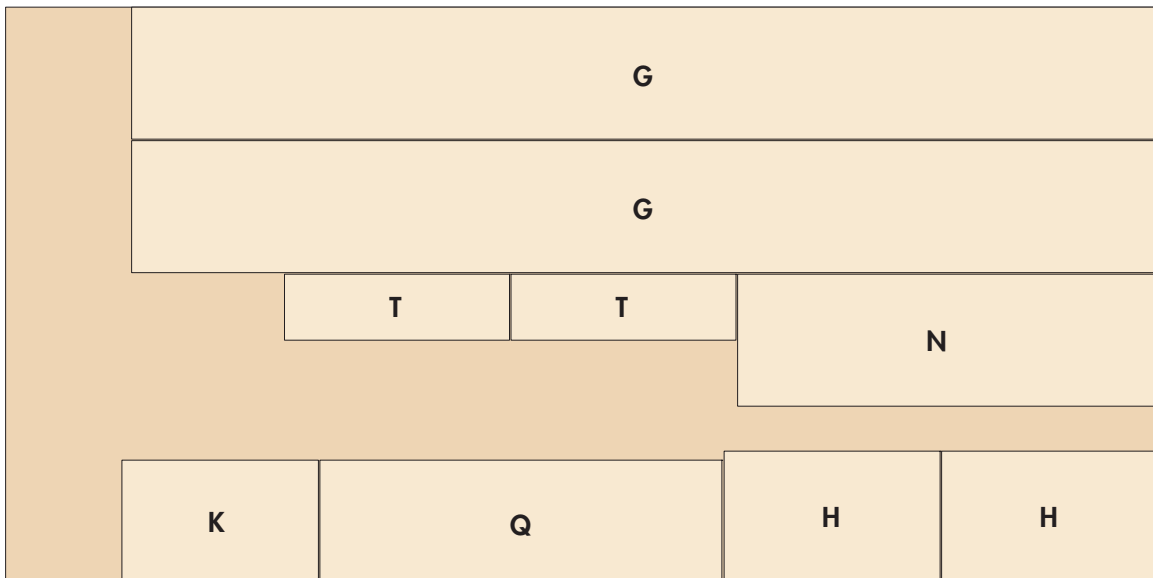


$\frac{3}{4}$ " x 49" x 97" MDF

**CUTTING DIAGRAM****3/4" x 49" x 97" MDF****3/4" x 49" x 97" MDF**

**CUTTING DIAGRAM**

$\frac{3}{4}$ " x 49" x 97" MDF



$\frac{3}{4}$ " x 49" x 97" MDF

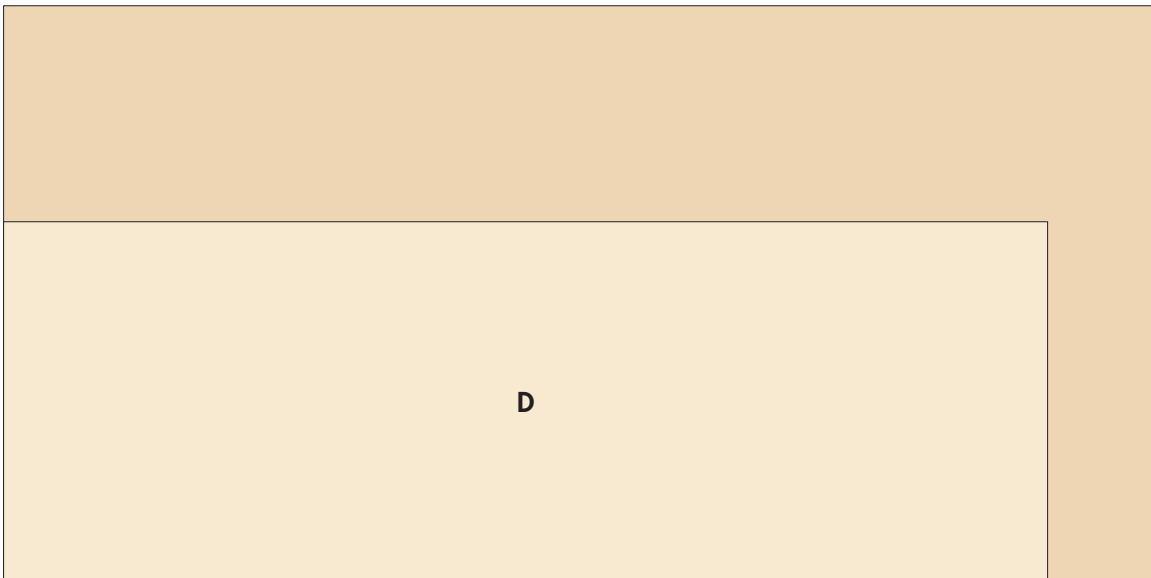
---

**CUTTING DIAGRAM**

---



**1/4" x 48" x 96" Birch Plywood**

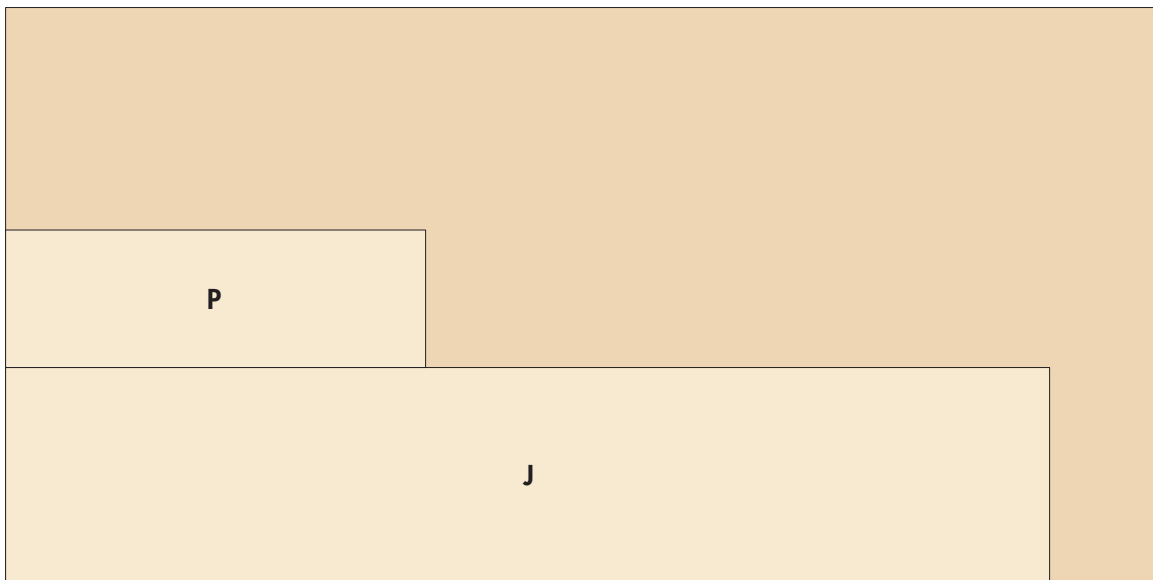


**1/4" x 48" x 96" Birch Plywood**

**CUTTING DIAGRAM**



**1/4" x 48" x 96" Birch Plywood**



**1/4" x 48" x 96" Birch Plywood**

## CUTTING DIAGRAM

