



# Thank You!

---

**You have successfully downloaded your document from Workbenchmagazine.com. Below are some tips for Trouble-Free Printing**

- 1)** Clear printer memory. If you are unable to print this document, turn off your printer for at least 15 seconds and try again.
  
- 2)** Print two or three pages at a time. If clearing the printer memory didn't help, try printing only two or three pages at one time, rather than sending the entire file
  
- 3)** If a document is required to be at an accurate scale set the page scaling option to "none" in your printer settings.
  
- 4)** Get advanced printer help. Visit Adobe Support for instructions in troubleshooting common printer problems.

<http://www.adobe.com/support/techdocs/316508.html>

## MATERIALS LIST



## MATERIALS & HARDWARE

Part	Qty	T	W	L	Material
A Top Rail (Outer Frame)	1	1 1/8"	9"	24"	White Oak
B Bottom Rail (Outer Frame)	1	1 1/8"	12"	24"	White Oak
C Stile (Outer Frame)	2	1 1/8"	6"	81"	White Oak
D Rail (Insert Frame)	4	3/4"	1 1/2"	25 1/2"	White Oak
E Stile (Insert Frame)	4	3/4"	1 1/2"	61 1/2"	White Oak
F Vertical Divider (Glass Insert)	2	3/4"	3/4"	60"	White Oak
G Horizontal Divider (Glass Insert)	2	3/4"	3/4"	24"	White Oak
H Glass Stop	1	1/4"	1/4"	42"	White Oak
I Vertical Divider (Screen Insert)	2	3/4"	3/4"	60"	White Oak
J Horizontal Divider (Screen Insert)	2	3/4"	3/4"	24"	White Oak
K Trim Strip (Screen Insert)	1	1/4"	1"	15'	White Oak

- (6) Half-turnbuttons
- (90) 1/2" Brass Brads
- (14) 1/2" BeadLOCK Tenons
- (24) #6 x 1/2" Brass Fh Woodscrews

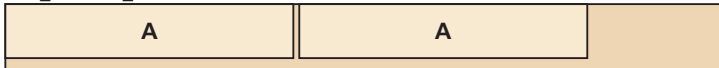
- Pneumatic Door Closer
- (2) Black Iron Spear Strap Hinge\*
- (1) Rough Iron Passage Door Rim Latch\*

\* Available at [www.VanDykes.com](http://www.VanDykes.com)



## CUTTING DIAGRAM

1 1/2 x 5 1/2 - 60" WHITE OAK



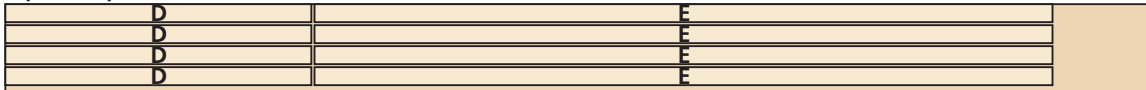
1 1/2 x 5 1/2 - 96" WHITE OAK



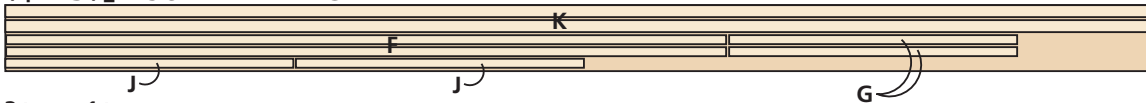
1 1/2 x 7 1/4 - 96" WHITE OAK (2 PCS.)



3/4 x 7 1/4 - 96" WHITE OAK



3/4 x 5 1/2 - 96" WHITE OAK



3/4 x 3 1/2 - 60" WHITE OAK



3/4 x 3 1/2 - 60" WHITE OAK

