



# Thank You!

---

**You have successfully downloaded your document from Workbenchmagazine.com. Below are some tips for Trouble-Free Printing**

- 1)** Clear printer memory. If you are unable to print this document, turn off your printer for at least 15 seconds and try again.
  
- 2)** Print two or three pages at a time. If clearing the printer memory didn't help, try printing only two or three pages at one time, rather than sending the entire file
  
- 3)** If a document is required to be at an accurate scale set the page scaling option to "none" in your printer settings.
  
- 4)** Get advanced printer help. Visit Adobe Support for instructions in troubleshooting common printer problems.

<http://www.adobe.com/support/techdocs/316508.html>

## MATERIALS LIST



### BASE

A (4) Front/Back Legs (Maple)	$\frac{3}{4}$ " x 3" x 34 $\frac{1}{4}$ "
B (4) Side Legs (Maple)	$\frac{3}{4}$ " x 2 $\frac{1}{2}$ " x 34 $\frac{1}{4}$ "
C (2) Sides (MDF)	$\frac{3}{4}$ " x 20 $\frac{1}{2}$ " x 29 $\frac{3}{4}$ "
D (2) Upper Filler Blocks (Maple)	$\frac{3}{4}$ " x 1 $\frac{1}{2}$ " x 16"
E (2) Lower Filler Blocks (Maple)	$\frac{3}{4}$ " x 3" x 16"
F (2) Upper Fr. Rails (Maple)	$\frac{3}{4}$ " x 1 $\frac{1}{2}$ " x 43"
G (4) Mounting Cleats (Fir)	1 $\frac{1}{2}$ " x 3 $\frac{1}{2}$ " x 19"
H (2) Adj. Shelves (MDF)	$\frac{3}{4}$ " x 19" x 42 $\frac{3}{4}$ "
I (4) Adj. Shelf Rails (Maple)	$\frac{3}{4}$ " x 1 $\frac{1}{2}$ " x 42 $\frac{3}{4}$ "
J (6) Guides (MDF)	$\frac{3}{4}$ " x 1 $\frac{1}{2}$ " x 19"
K (1) Lower Shelf (MDF)	$\frac{3}{4}$ " x 19" x 43"
L (2) Lower Shelf Rails (Maple)	$\frac{3}{4}$ " x 3" x 43"
M (1) Back Panel (Hardboard)	$\frac{1}{4}$ " x 29 $\frac{3}{4}$ " x 37 $\frac{3}{4}$ "
N (2) Keeper Strips (Maple)	$\frac{3}{4}$ " x 1 $\frac{1}{2}$ " x 29 $\frac{3}{4}$ "

### BENCH TOP

O (2) Core Pieces (MDF)	$\frac{3}{4}$ " x 24" x 53 $\frac{1}{4}$ "
P (1) Cover (Hardboard)	$\frac{1}{4}$ " x 24" x 53 $\frac{1}{4}$ "
Q (1) Side Edging Strip (Maple)	$\frac{3}{4}$ " x 1 $\frac{3}{4}$ " x 24"
R (2) Fr./Bk. Edging (Maple)	$\frac{3}{4}$ " x 1 $\frac{3}{4}$ " x 60"
S (2) Tool Tray Sides (Maple)	$\frac{3}{4}$ " x 3 $\frac{1}{2}$ " x 24"
T (2) Tray Front/Back (Maple)	$\frac{3}{4}$ " x 1 $\frac{3}{4}$ " x 6"
U (1) Tray Bottom (Hardboard)	$\frac{1}{4}$ " x 5 $\frac{1}{4}$ " x 24 $\frac{3}{4}$ "

### TOOL TOTE & STORAGE BINS \*

V (2) Fr./Back, Tote (MDF)	$\frac{3}{4}$ " x 3" x 9 $\frac{7}{8}$ "
W (2) Fr./Back, 6"-Tall Bin (MDF)	$\frac{3}{4}$ " x 6" x 9 $\frac{7}{8}$ "
X (2) Fr./Back, 9"-Tall Bin (MDF)	$\frac{3}{4}$ " x 9" x 9 $\frac{7}{8}$ "
Y (2) Sides, Tote (MDF)	$\frac{3}{4}$ " x 3" x 19 $\frac{3}{4}$ "
Z (2) Sides, 6"-Tall Bin (MDF)	$\frac{3}{4}$ " x 6" x 19 $\frac{3}{4}$ "

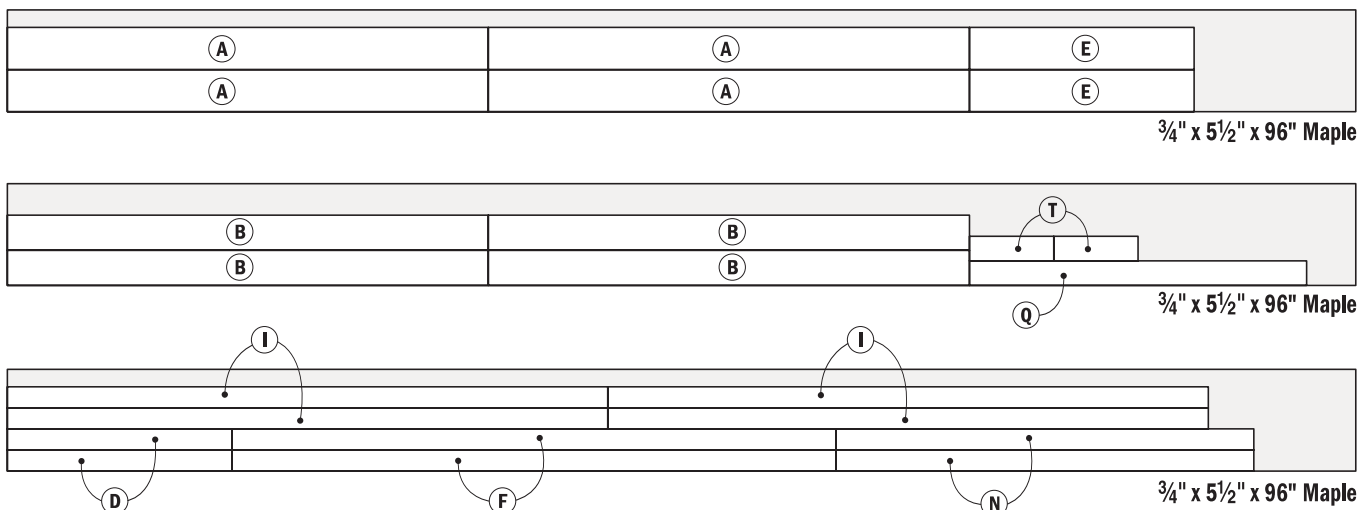
AA (2) Sides, 9"-Tall Bin (MDF)	$\frac{3}{4}$ " x 9" x 19 $\frac{3}{4}$ "
BB (1) Bottom (Hardboard)	$\frac{1}{4}$ " x 9 $\frac{1}{8}$ " x 19 $\frac{1}{2}$ "
CC (1) Tote Handle (Maple)	$\frac{3}{4}$ " x 3" x 18 $\frac{3}{4}$ "
DD (1) Backboard (MDF)	$\frac{3}{4}$ " x 12" x 60"

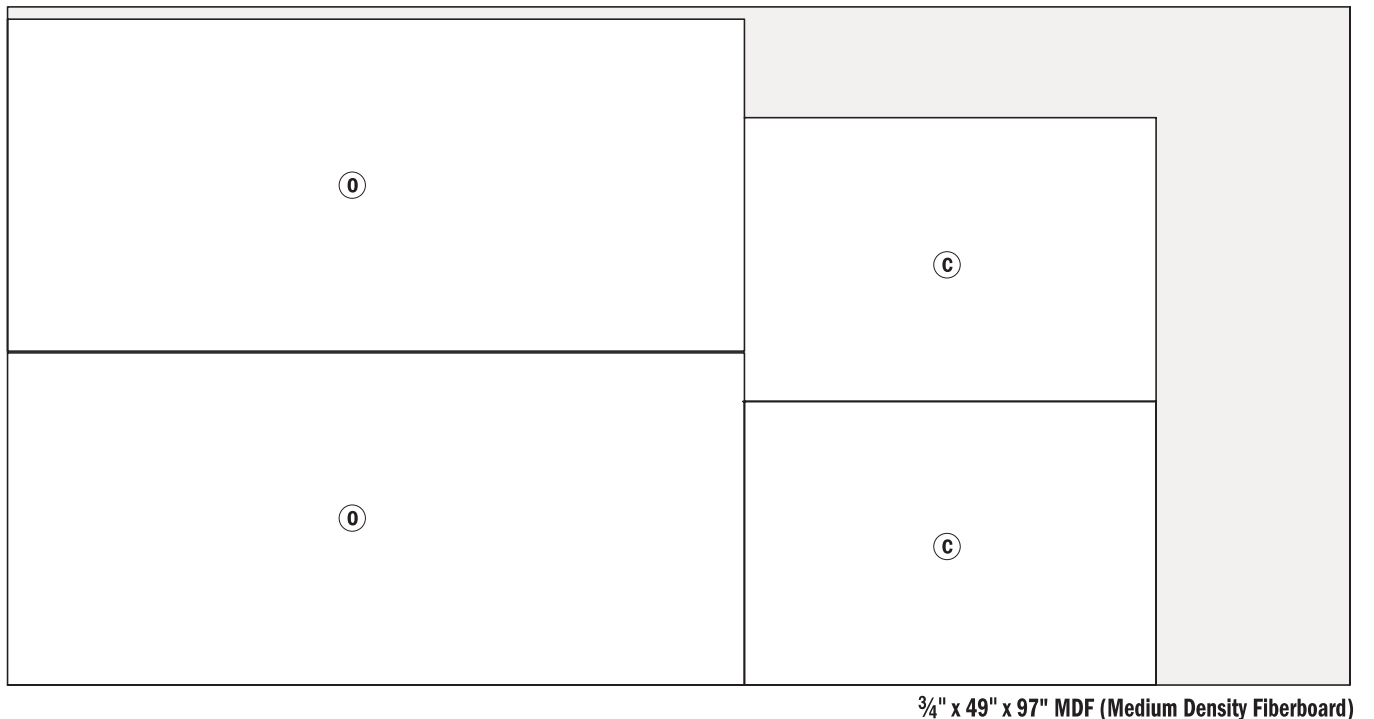
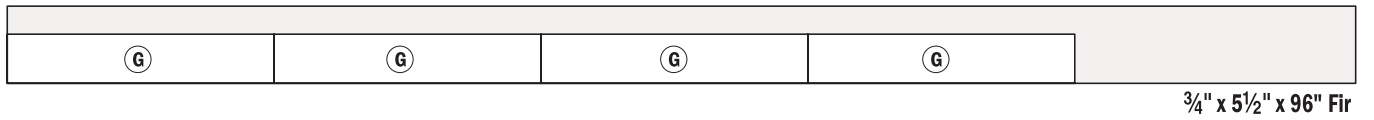
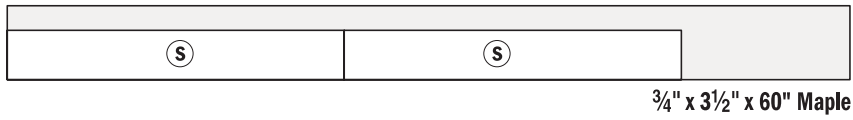
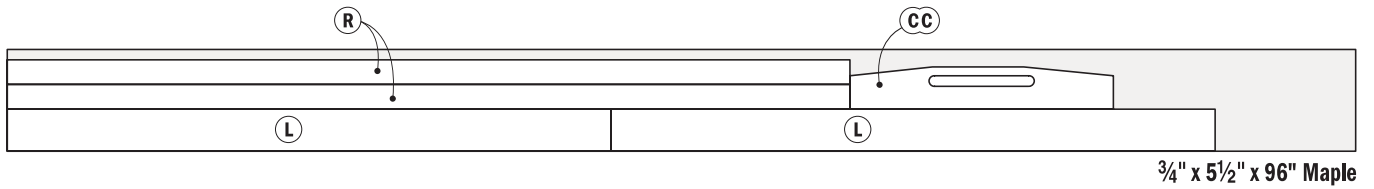
\*Number of parts needed for one Tote, one 6", and one 9" Bin

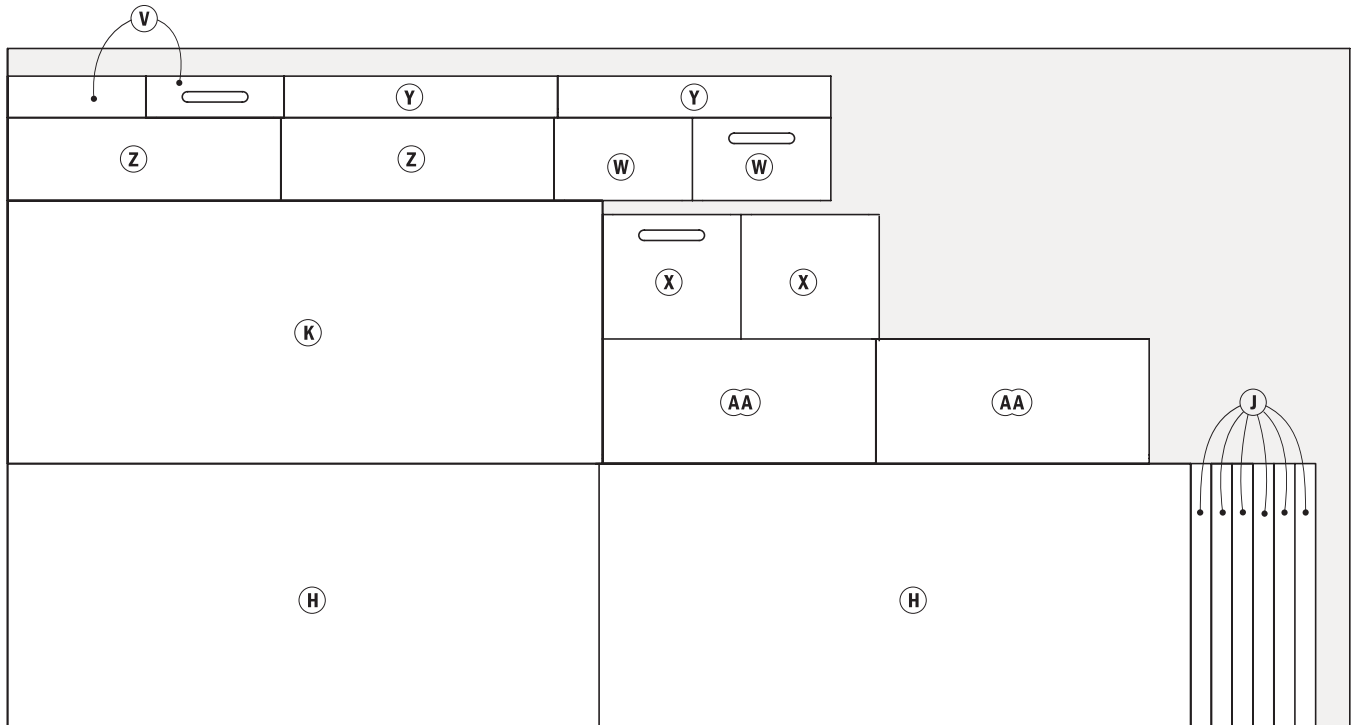
### HARDWARE

- (39) #8 x 1 $\frac{1}{4}$ " Fh Woodscrews
- (22) #8 x 1 $\frac{3}{4}$ " Fh Woodscrews
- (6) #8 x 2 $\frac{1}{2}$ " Fh Woodscrews
- (12) #6 x  $\frac{3}{4}$ " Fh Woodscrews
- (8)  $\frac{3}{8}$ " x 5 $\frac{1}{2}$ " Machine Bolts
- (16)  $\frac{3}{8}$ " Washers
- (8)  $\frac{3}{8}$ " Hex Nuts

## CUTTING DIAGRAM



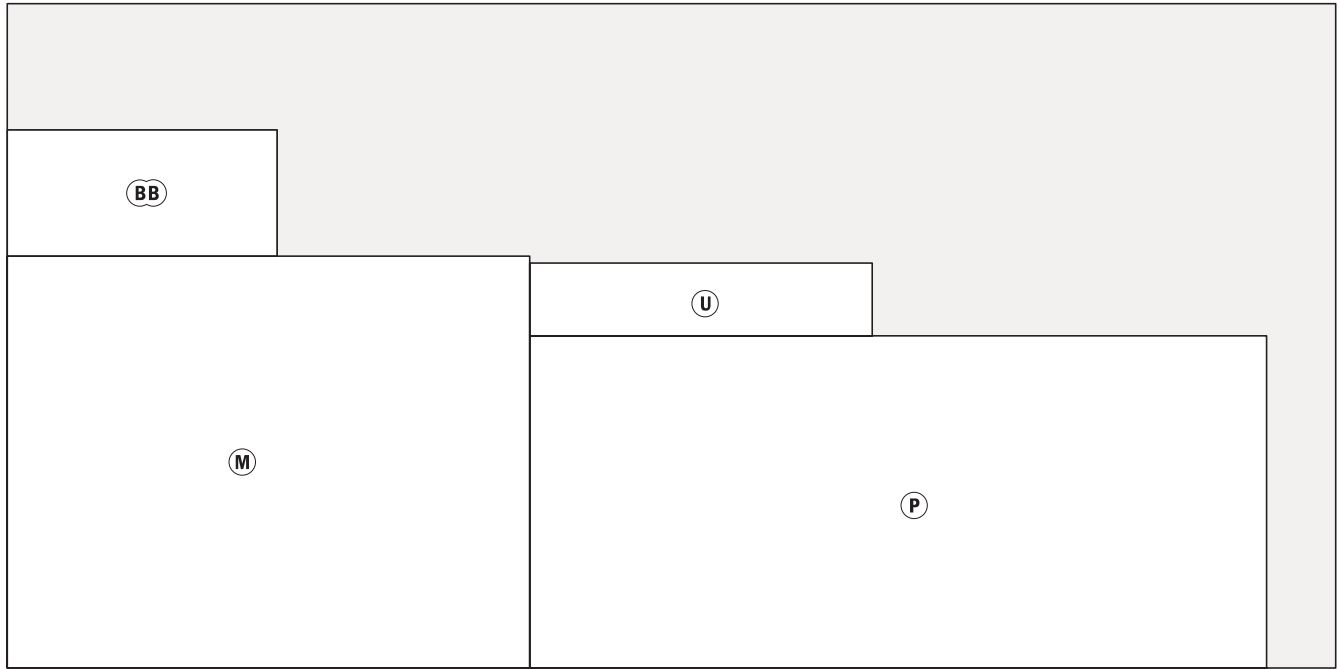




$\frac{3}{4}$ " x 49" x 97" MDF (Medium Density Fiberboard)



$\frac{3}{4}$ " x 49" x 97" MDF (Medium Density Fiberboard)



1/4" x 48" x 96" Hardboard