



# Thank You!

---

**You have successfully downloaded your document from Workbenchmagazine.com. Below are some tips for Trouble-Free Printing**

- 1)** Clear printer memory. If you are unable to print this document, turn off your printer for at least 15 seconds and try again.
- 2)** Print two or three pages at a time. If clearing the printer memory didn't help, try printing only two or three pages at one time, rather than sending the entire file
- 3)** If a document is required to be at an accurate scale set the page scaling option to "none" in your printer settings.
- 4)** Get advanced printer help. Visit Adobe Support for instructions in troubleshooting common printer problems.

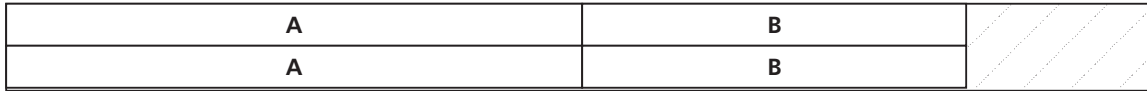
<http://www.adobe.com/support/techdocs/316508.html>

## MATERIALS LIST

<b>A</b> (2) Headboard Legs	3 x 3 -48	<b>F</b> (12) Headboard Slats	5/8 x 4 7/8 -11 1/8	<b>K</b> (4) Balls	4" Round
<b>B</b> (2) Footboard Legs	3 x 3 -32	<b>G</b> (12) Footboard Slats	5/8 x 4 7/8 -12 3/8	<b>L</b> (2) Side Rails	1 x 6 -81 1/2
<b>C</b> (2) Top Rails	1 x 8 -62 1/4	<b>H</b> (1) Hdbrd. Starter Slat	5/8 x 5 1/4 -11 1/8	<b>M</b> (4) Ogee Blocks	1 x 3 -12
<b>D</b> (2) Bottom Rails	1 x 6 -62 1/4	<b>I</b> (1) Ftbrd. Starter Slat	5/8 x 5 1/4 -12 3/8	<b>N</b> (2) Side Rail Cleats	1 x 1 -81 1/2
<b>E</b> (1) Stretcher	1 x 6 -62 1/4	<b>J</b> (4) Capitals	1 x 4 -4	<b>O</b> (2) Hdbrd./Ftbrd. Cleats	1 x 1 -59 1/4

## CUTTING DIAGRAM

8/4 x 7 1/4 - 96" CHERRY (TWO BOARDS)



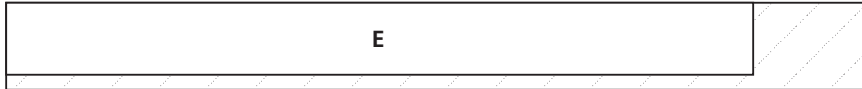
5/4 x 5 1/2 - 72" CHERRY (FOUR BOARDS)



5/4 x 7 1/4 - 72" CHERRY (TWO BOARDS)



5/4 x 7 1/4 - 72" CHERRY



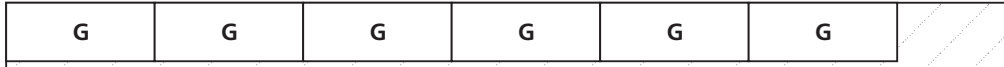
4/4 x 7 1/4 - 84" CHERRY



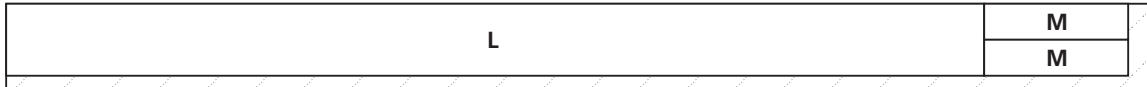
4/4 x 7 1/4 - 84" CHERRY



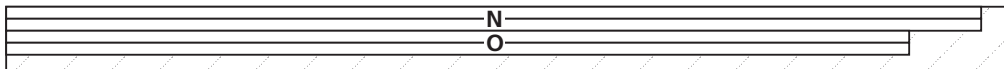
4/4 x 5 1/2 - 84" CHERRY (TWO BOARDS)



5/4 x 7 1/4 - 96" CHERRY (TWO BOARDS)



5/4 x 5 1/2 - 84" MAPLE



**CUTTING DIAGRAM** **$\frac{3}{4}$  x 48 - 96" FIR PLYWOOD (TWO SHEETS)**